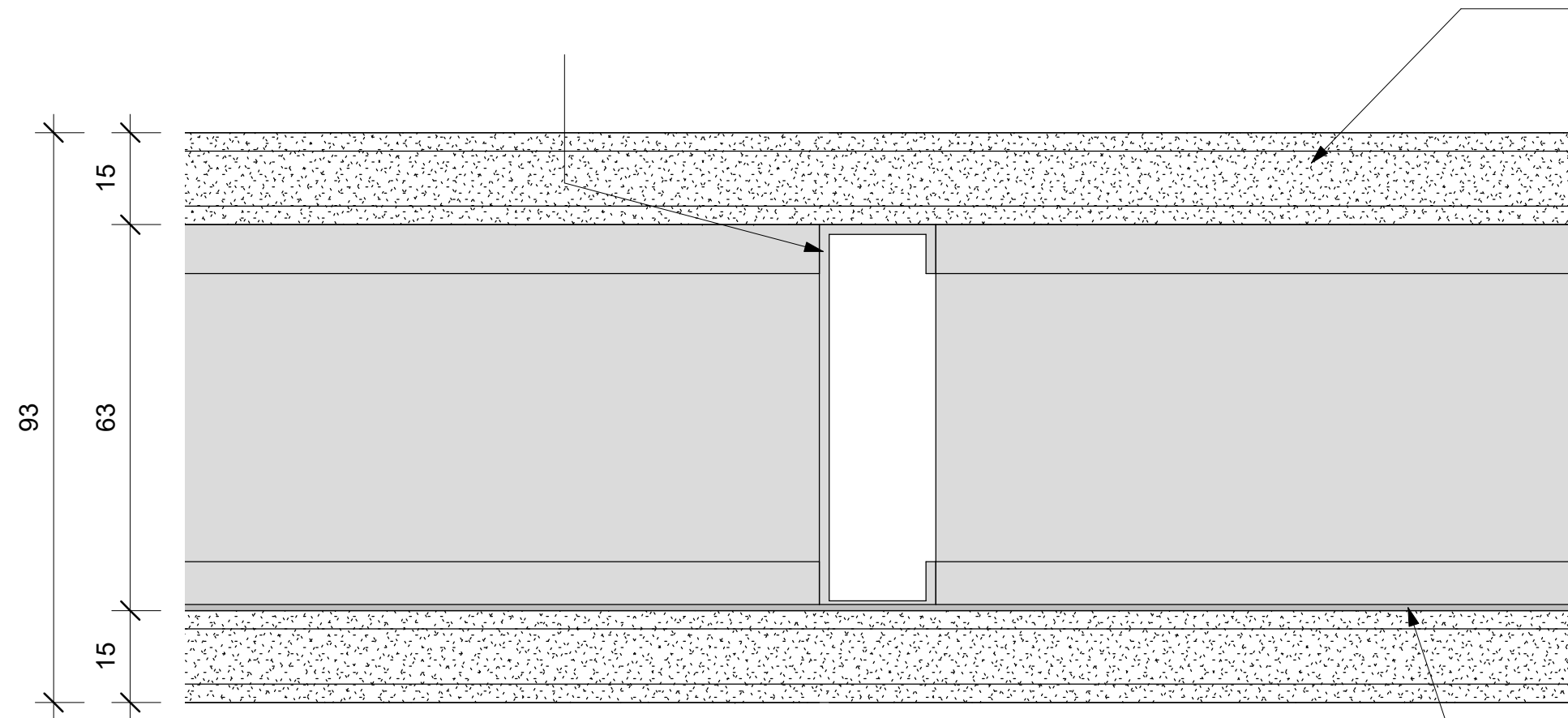


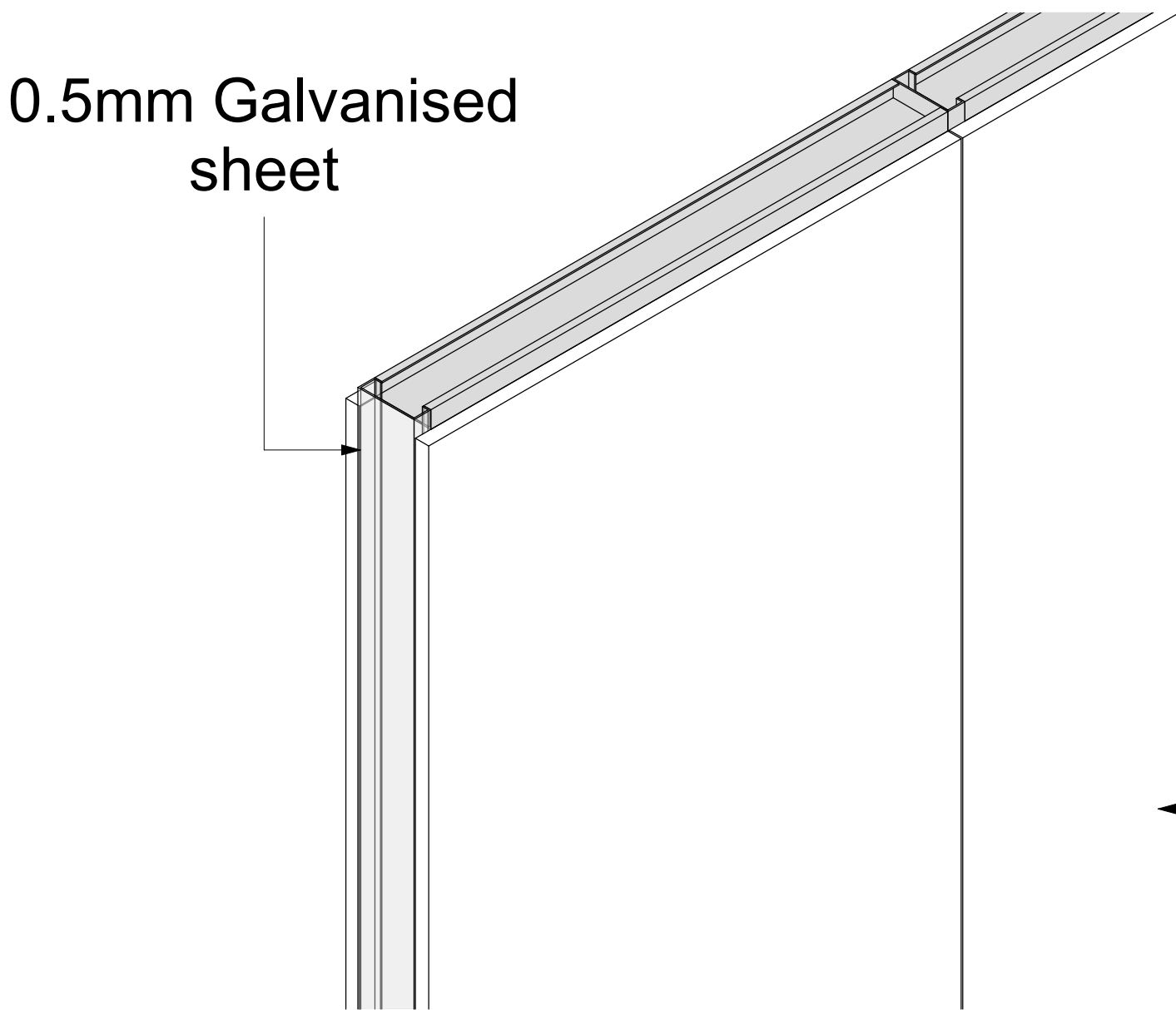
JUMBO SecureWall 63/60

63mm galvanised steel Studs fixed at 600mm centres to galvanised steel top and bottom track.



PW12 - JUMBO SecureWall 63/60 - PLAN

Scale 1 : 1

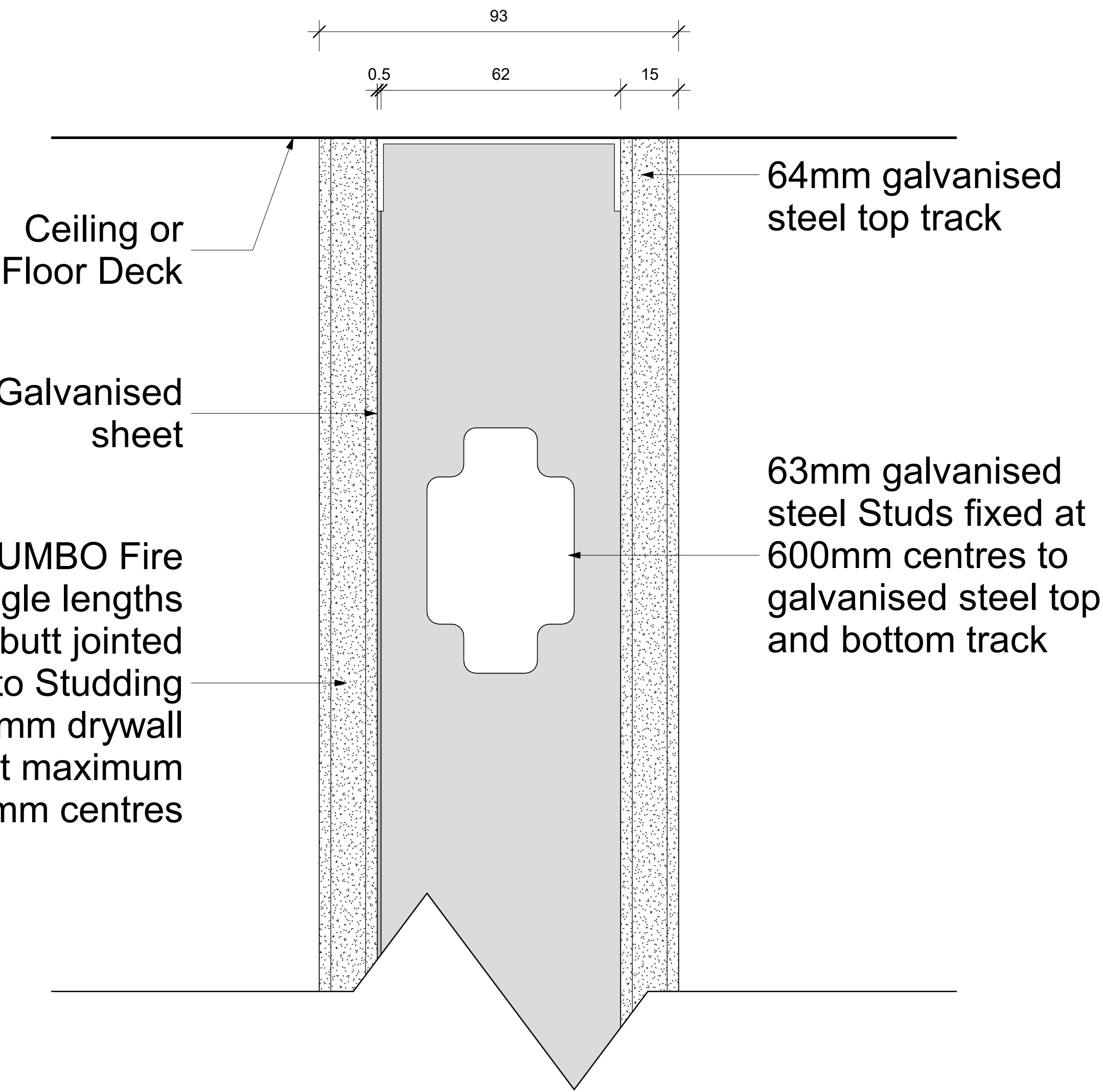


PW12 - JUMBO SecureWall 63/60 - 3D

Scale

15mm thick JUMBO Fire Boards in single lengths to suit height, butt jointed and secured to Studding with 25mm drywall screws at maximum 220mm centres

Keynote Legend	
Key Value	Keynote Text
PW12	Pelican Systems JUMBO SecurityWALL 63/60 with overall thickness of 93mm, with 63 x 35mm JUMBO Studs at 600mm centres friction fitted into head Track and floor Track and clad on both sides with a single layer of 15mm thick JUMBO Fire Plasterboard fixed at 220mm centres using 25mm JUMBO Drywall Screws, all plasterboard joints must overlap. 0.5mm Galvanised sheet to be used behind the 15mm JUMBO Plasterboard on one side (Impact Side). All exterior joints to be covered with JUMBO Tape and finished with two layers of JUMBO Jointing Plaster applied and lightly sanded down, leaving wall surface prepared for painting, all in accordance with the supplier's recommendations.



PW12 - JUMBO SecureWall 63/60 - SECTION

Scale 1 : 1

PW12 - JUMBO SecureWall 63/60	
System	Partitions
Type of Product	JUMBO SecureWall 63/60
Recommended Areas	Security between Tenants 1 hour
Technical Spec	* 63mm Stud and Track * 15mm JUMBO Fire Board on each side of Stud and Track * 0.5mm Galvanised sheet
Material	0.45mm Galvanized Steel with Z100 Coating
Picture	
Overall Thickness	93 mm
Colour Options	To be painted.
Building material information	N/A
Fire Protection	1 Hour Fire Rating
Sound absorption	N/A
Sound attenuation	N/A
Sound insulation	N/A
Practical sound absorption coefficient (α _p)	
Light reflectance	N/A
Thermal conductivity	N/A
Air permeability	N/A
Humidity	N/A
Green Rating	N/A
Specifications	Pelican Systems JUMBO SecureWall 63/60 with overall thickness of 93mm, with 63 x 35mm JUMBO Studs at 600mm centres friction fitted into head Track and floor Track and clad on both sides with a single layer of 15mm thick JUMBO Fire Plasterboard fixed at 220mm centres using 25mm JUMBO Drywall Screws, all plasterboard joints must overlap. 0.5mm Galvanised sheet to be used behind the 15mm JUMBO Plasterboard on one side(Impact Side). All exterior joints to be covered with JUMBO Tape and finished with two layers of JUMBO Jointing Plaster applied and lightly sanded down, leaving wall surface prepared for painting, all in accordance with the supplier's recommendations.
Notes	The specification is based on a height restriction of up to 3.6 Metres high.



pelican systems
ceiling and partitioning specialists...

Head Office / Durban Branch | 765 / 793 Chris Hani Road, Durban, Redhill | 031 563 7307
Find us online at www.pelican.co.za or any of these social media sites

