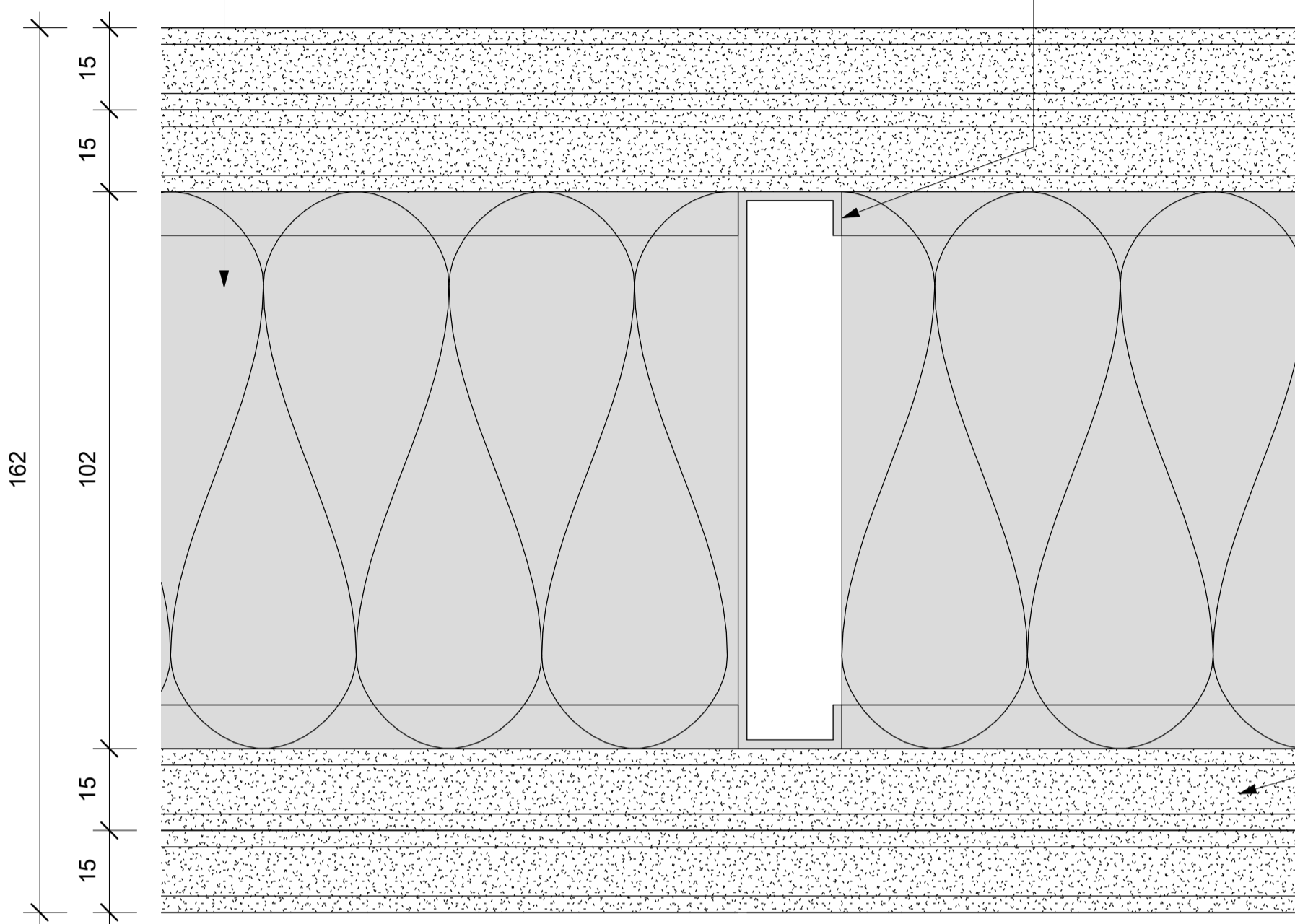


102mm thick JUMBO SoundTherm Insulation

102mm galvanised steel Studs fixed at 600mm centres to galvanised steel top and bottom track.

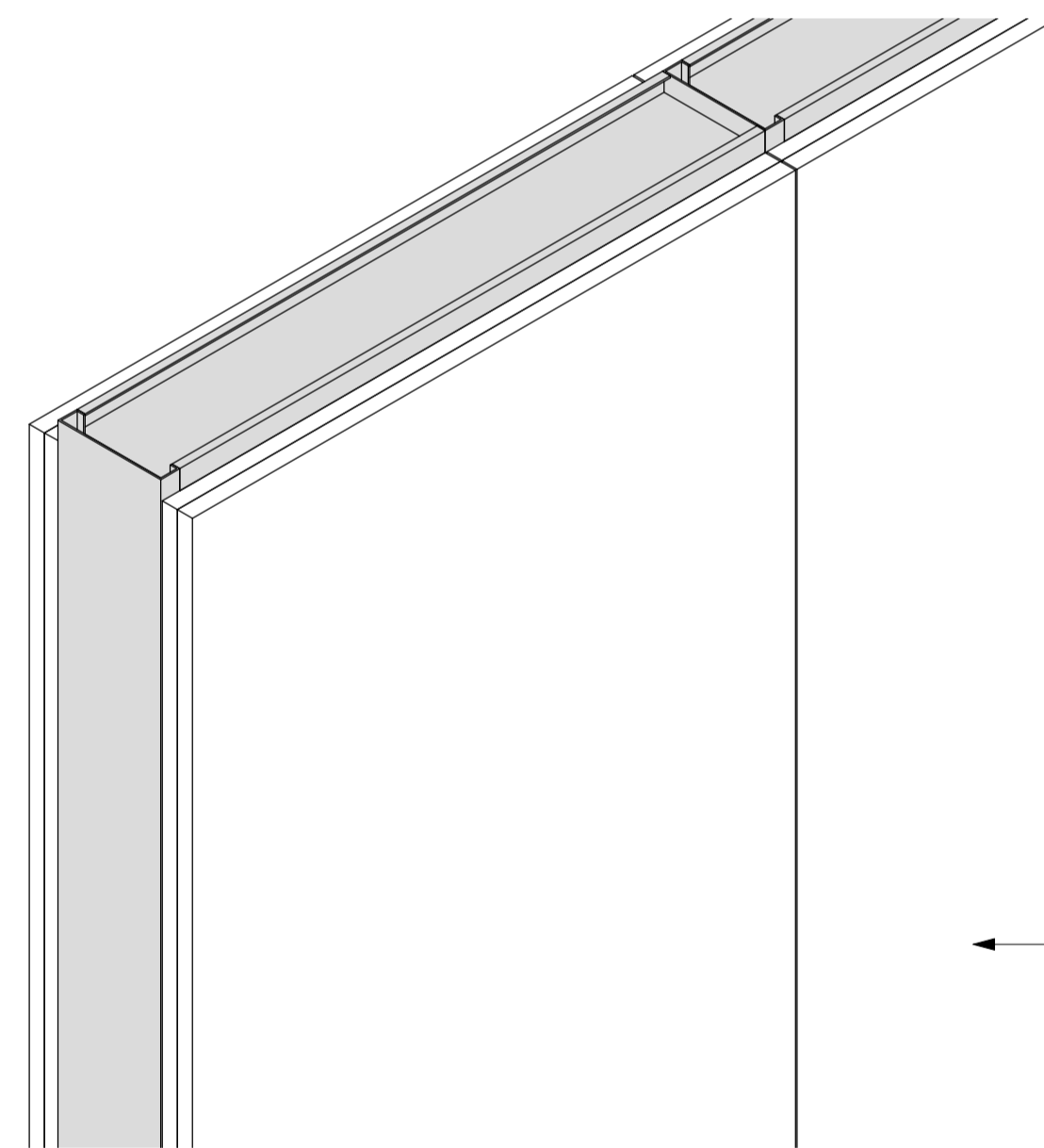
2 x 15mm thick JUMBO Fire Boards in single lengths to suit height, butt jointed and secured to Studding with 25mm drywall screws at maximum 220mm centres

Keynote Legend	
Key Value	Keynote Text
PW11	Pelican Systems JUMBO AcousticWALL 102/120/S50 with overall thickness of 162mm, with 102 x 35mm JUMBO Studs at 600mm centres friction fitted into head Track and floor Track and clad on both sides with a double layer of 15mm thick Fire Resistant JUMBO Plasterboard fixed at 220mm centres using 25mm JUMBO Drywall Screws on the base layer and 41mm JUMBO Drywall Screws on the face layer, all plasterboard joints must overlap. All exterior joints to be covered with JUMBO Tape and finished with two layers of JUMBO Jointing Plaster applied and lightly sanded down, leaving wall surface prepared for painting, all in accordance with the supplier's recommendations. A 102mm thick JUMBO SoundTherm Insulation to be installed in the cavity.



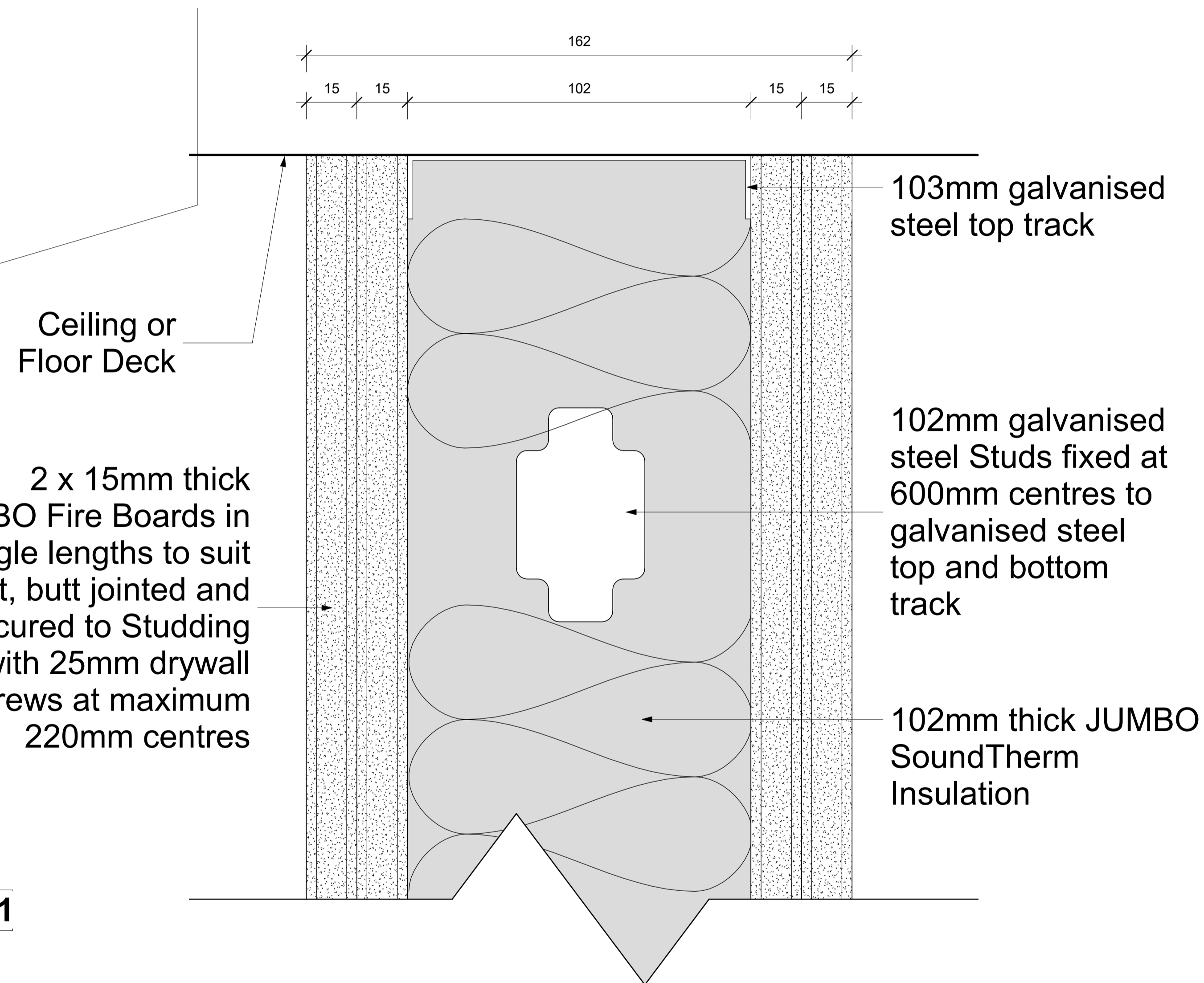
PW11 - JUMBO AcousticWALL 102/120/S50 - PLAN

Scale 1 : 1



PW11 - JUMBO AcousticWALL 102/120/S50 - 3D

Scale



PW11 - JUMBO AcousticWALL 102/120/S50 - SECTION

Scale 1 : 1

PW11 - JUMBO AcousticWALL 102/120/S50	
System	Partitions
Type of Product	JUMBO AcousticWALL 102/120/S50
Recommended Areas	Hotels / Conference Rooms
Technical Spec	* 102mm Stud and Track * 15mm (x2) JUMBO Fire Boards on both side of Stud and Track * 102mm thick JUMBO SoundTherm Insulation
Material	0,60mm Galvanized Steel with Z100 Coating
Picture	
Overall Thickness	162 mm
Colour Options	To be painted.
Building material information	N/A
Fire Protection	2 Hour Fire Rating
Sound absorption	N/A
Sound attenuation	50db
Sound insulation	N/A
Practical sound absorption coefficient (α _p)	
Light reflectance	N/A
Thermal conductivity	N/A
Air permeability	N/A
Humidity	N/A
Green Rating	N/A
Specifications	Pelican Systems JUMBO AcousticWALL 102/120/S50 with overall thickness of 162mm, with 102 x 35mm JUMBO Studs at 600mm centres friction fitted into head Track and floor Track and clad on both sides with a double layer of 15mm thick Fire Resistant JUMBO Plasterboard fixed at 220mm centres using 25mm JUMBO Drywall Screws on the base layer and 41mm JUMBO Drywall Screws on the face layer, all plasterboard joints must overlap. All exterior joints to be covered with JUMBO Tape and finished with two layers of JUMBO Jointing Plaster applied and lightly sanded down, leaving wall surface prepared for painting, all in accordance with the supplier's recommendations. A 102mm thick JUMBO SoundTherm Insulation to be installed in the cavity.
Notes	• The specification is based on a height restriction of up to 4.2 Metres high. • Acoustic Properties: 50db



pelican systems

ceiling and partitioning specialists...

Head Office / Durban Branch | 765 / 793 Chris Hani Road, Durban, Redhill | 031 563 7307

Find us online at www.pelican.co.za or any of these social media sites