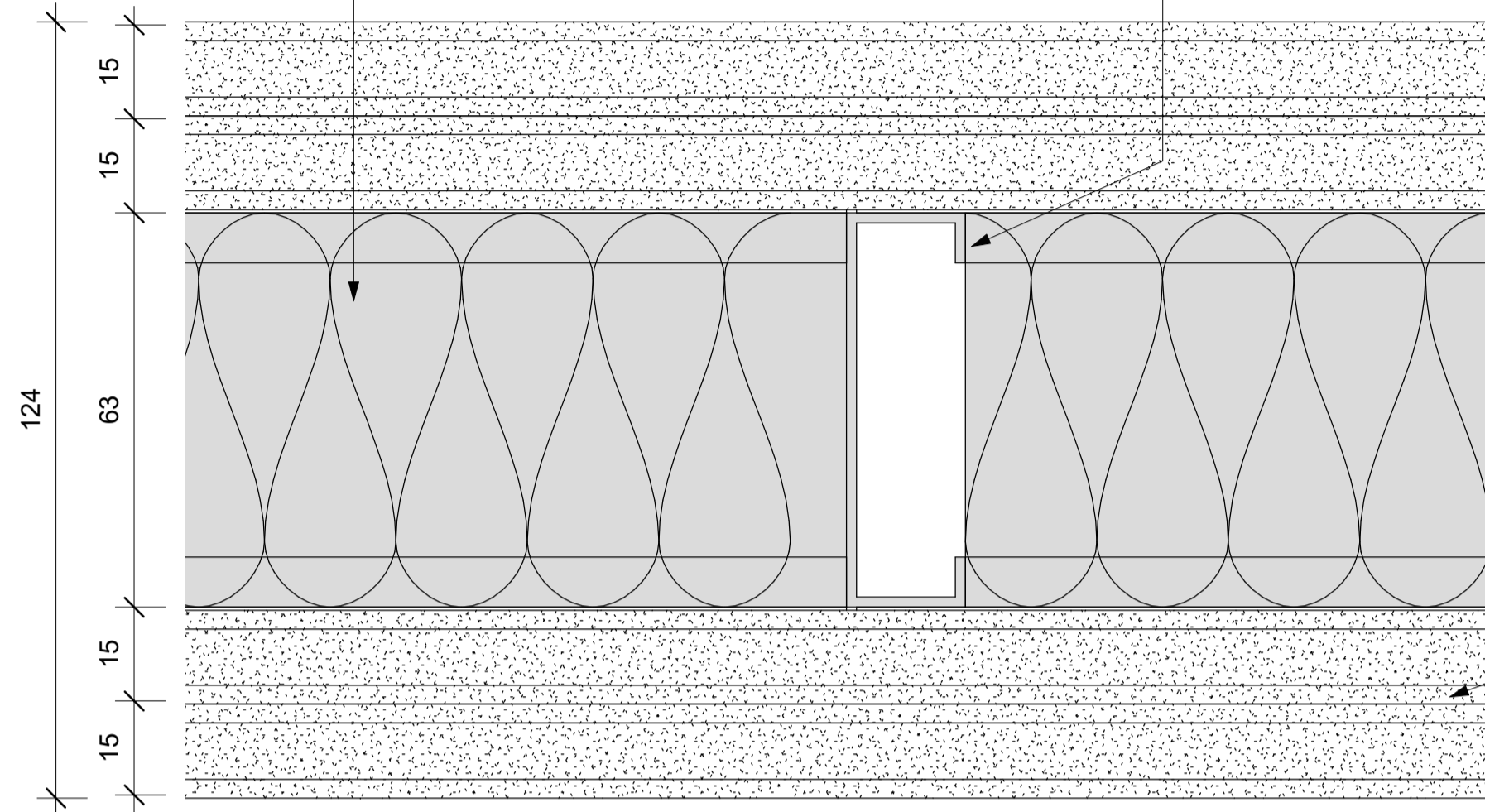


63mm thick JUMBO SoundTherm Insulation

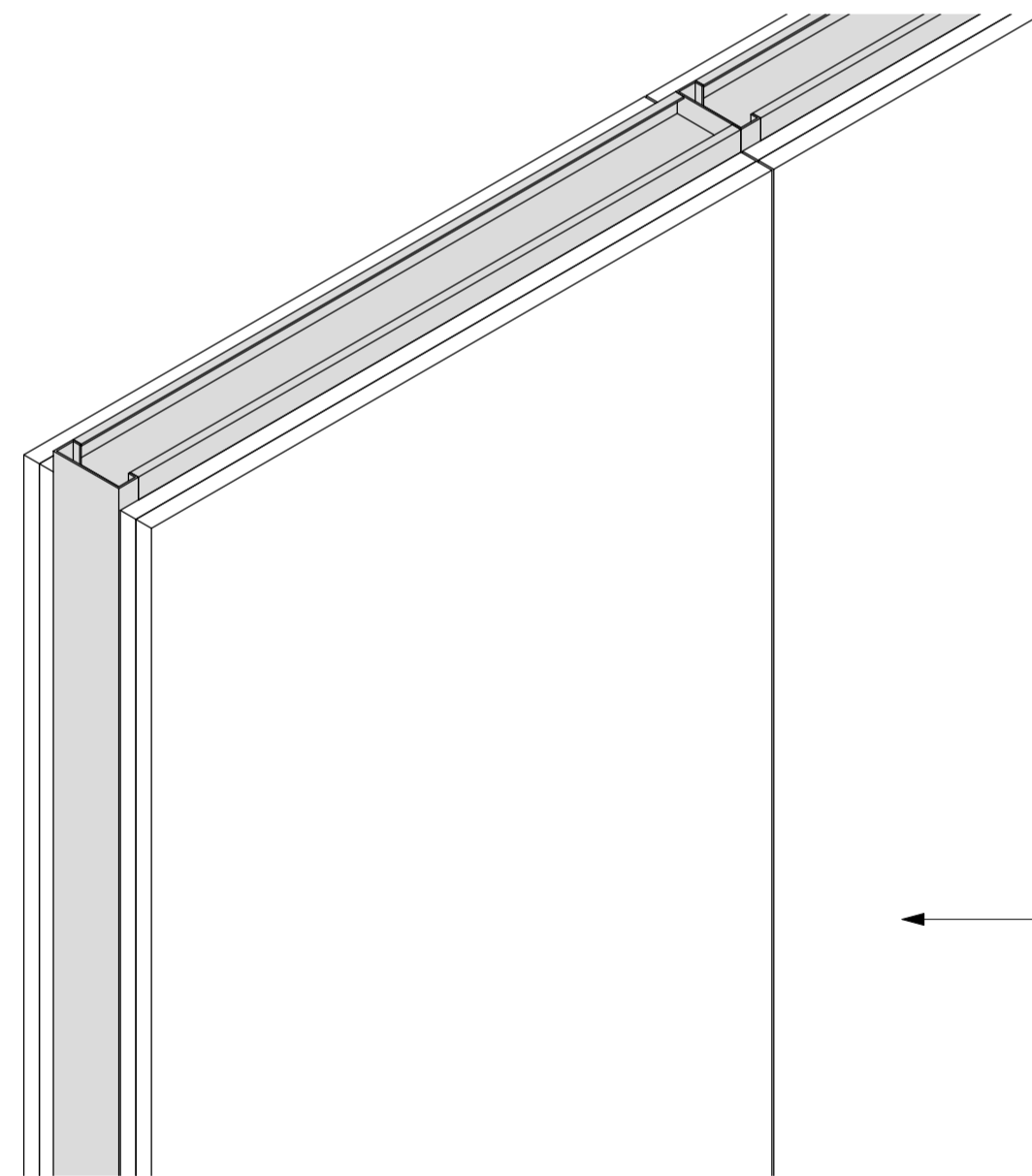
63mm galvanised steel Studs fixed at 600mm centres to galvanised steel top and bottom track.

2 x 15mm thick JUMBO Fire Boards in single lengths to suit height, butt jointed and secured to Studding with 25mm drywall screws at maximum 220mm centres



PW10 - JUMBO AcousticWALL 63/120/S50 - PLAN

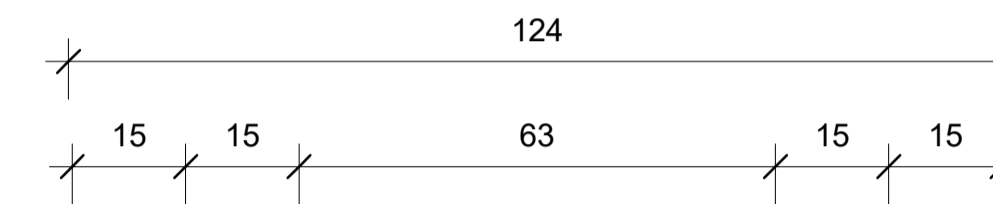
Scale 1 : 1



PW10 - JUMBO AcousticWALL 63/120/S50 - 3D

Scale

Keynote Legend	
Key Value	Keynote Text
PW10	Pelican Systems JUMBO FireWALL 63/120/S50 with overall thickness of 124mm, with 63 x 35mm JUMBO Studs at 600mm centres friction fitted into head Track and floor Track and clad on both sides with a double layer of 15mm thick Fire Resistant JUMBO Plasterboard fixed at 220mm centres using 25mm JUMBO Drywall Screws on the base layer and 41mm JUMBO Drywall Screws on the face layer, all plasterboard joints must overlap. All exterior joints to be covered with JUMBO Tape and finished with two layers of JUMBO Jointing Plaster applied and lightly sanded down, leaving wall surface prepared for painting, all in accordance with the supplier's recommendations. A 63mm thick JUMBO SoundTherm to be installed in the cavity.



Ceiling or Floor Deck

2 x 15mm thick JUMBO Fire Boards in single lengths to suit height, butt jointed and secured to Studding with 25mm drywall screws at maximum 220mm centres

PW10

64mm galvanised steel top track Secure to Studs with 25mm Screws & Second layer with 41mm

63mm galvanised steel Studs fixed at 600mm centres to galvanised steel top and bottom track

63mm thick JUMBO SoundTherm Insulation

PW10 - JUMBO AcousticWALL 63/120/S50 - SECTION

Scale 1 : 1

PW10 - JUMBO AcousticWALL 63/120/S50

System	Partitions
Type of Product	JUMBO AcousticWALL 63/120/S50
Recommended Areas	Hotels / Conference Rooms
Technical Spec	* 63mm Stud and Track * 15mm (x2) JUMBO Board on both side of Stud and Track * 63mm thick JUMBO SoundTherm Insulation
Material	0,45mm Galvanized Steel with Z100 Coating
Picture	
Overall Thickness	124 mm
Colour Options	To be painted.
Building material information	N/A
Fire Protection	120 Minute Fire Rating
Sound absorption	N/A
Sound attenuation	50db
Sound insulation	N/A
Practical sound absorption coefficient (α _p)	
Light reflectance	N/A
Thermal conductivity	N/A
Air permeability	N/A
Humidity	N/A
Green Rating	N/A
Specifications	Pelican Systems JUMBO AcousticWALL 63/120/S50 with overall thickness of 124mm, with 63 x 35mm JUMBO Studs at 600mm centres friction fitted into head Track and floor Track and clad on both sides with a double layer of 15mm thick Fire Resistant JUMBO Plasterboard fixed at 220mm centres using 25mm JUMBO Drywall Screws on the base layer and 41mm JUMBO Drywall Screws on the face layer, all plasterboard joints must overlap. All exterior joints to be covered with JUMBO Tape and finished with two layers of JUMBO Jointing Plaster applied and lightly sanded down, leaving wall surface prepared for painting, all in accordance with the supplier's recommendations. A 63mm thick JUMBO SoundTherm Insulation to be installed in the cavity.
Notes	<ul style="list-style-type: none"> The specification is based on a height restriction of up to 3.6 Metres high. In accordance with SANS10177-2



pelican systems

ceiling and partitioning specialists...

Head Office / Durban Branch | 765 / 793 Chris Hani Road, Durban, Redhill | 031 563 7307

Find us online at www.pelican.co.za or any of these social media sites

