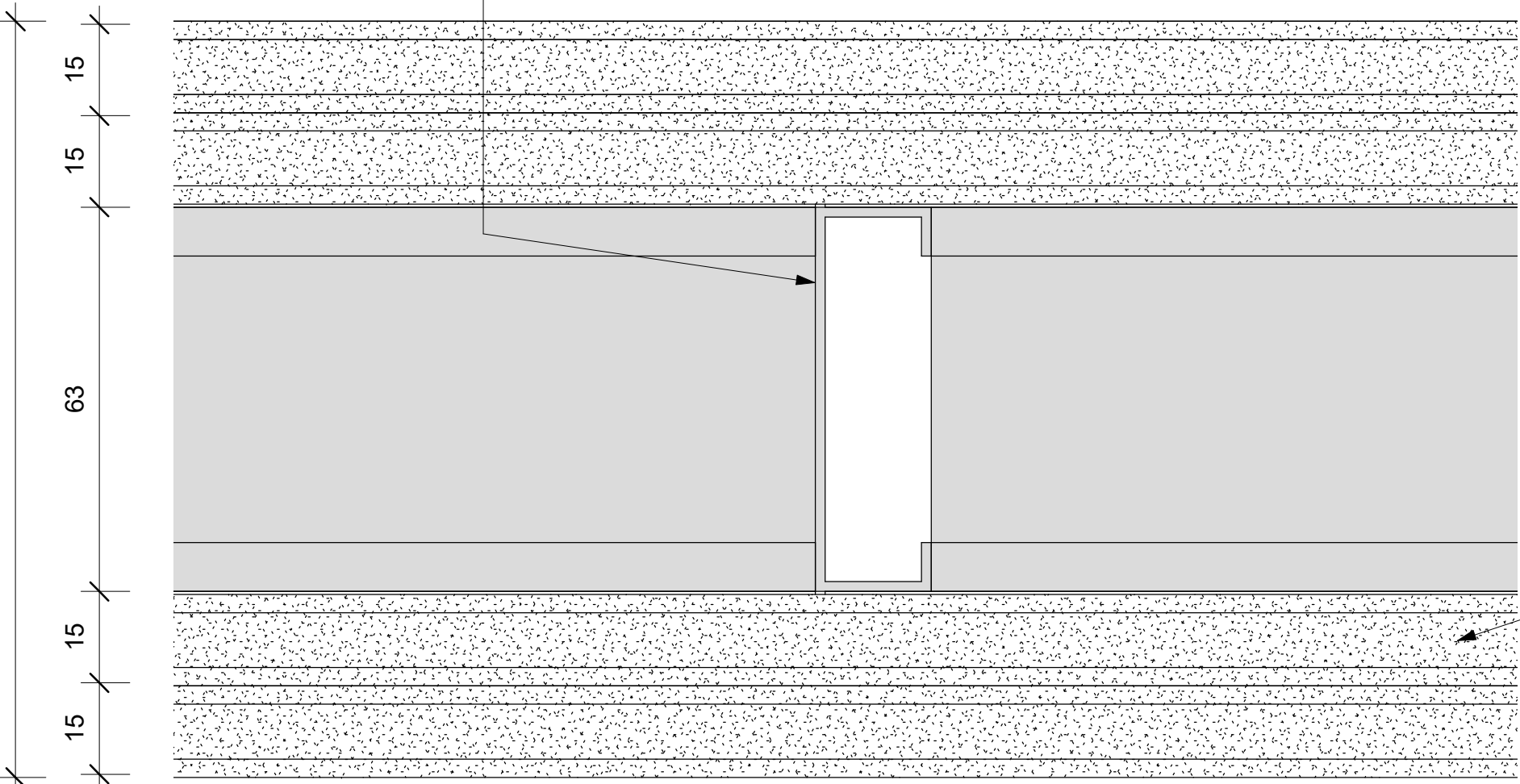


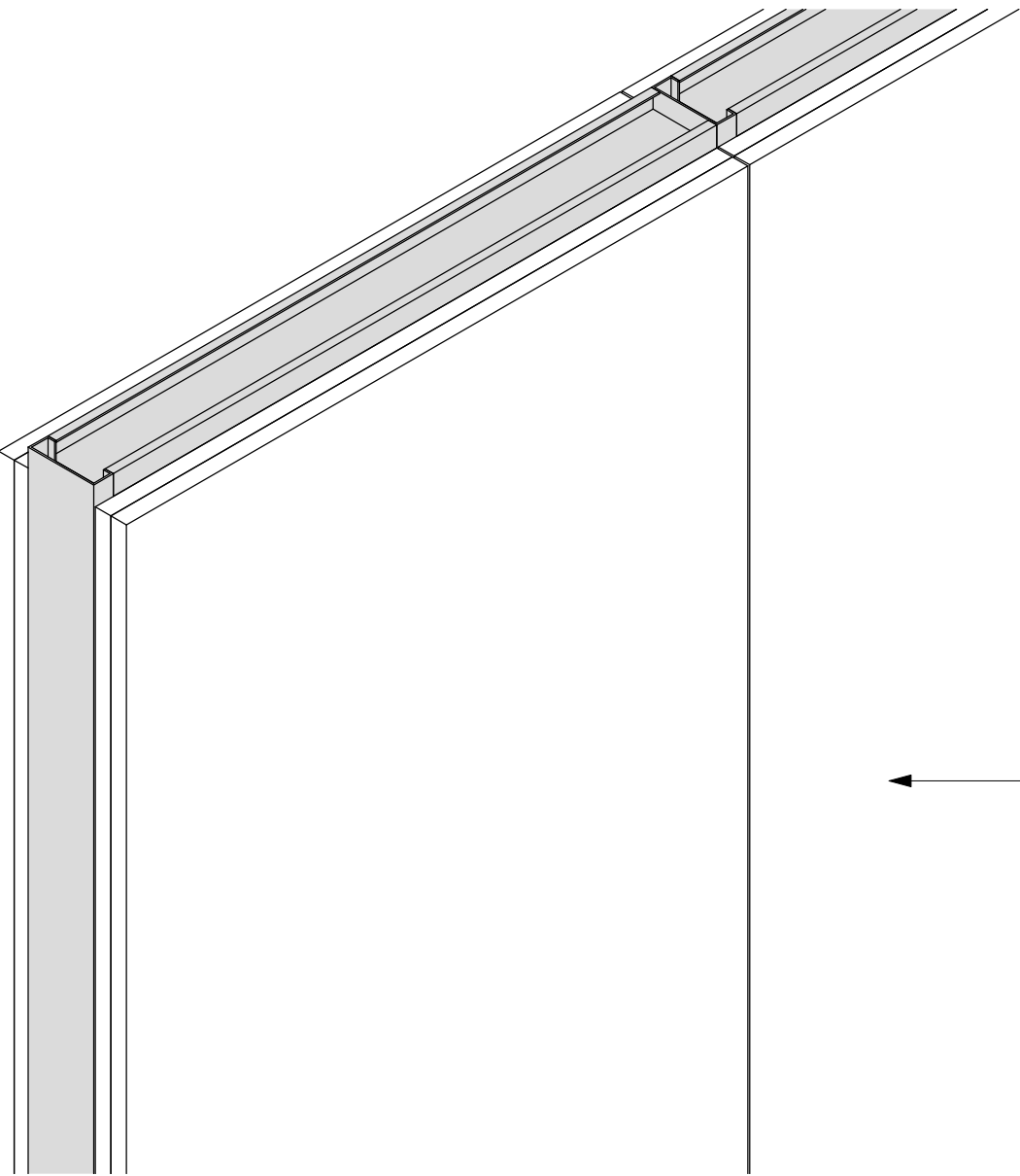
JUMBO FireWALL 63/120

63mm galvanised steel Studs fixed at 600mm centres to galvanised steel top and bottom track.



PW09 - JUMBO FireWALL 63/120 - PLAN

Scale 1 : 1



PW09 - JUMBO FireWALL 63/120 - 3D

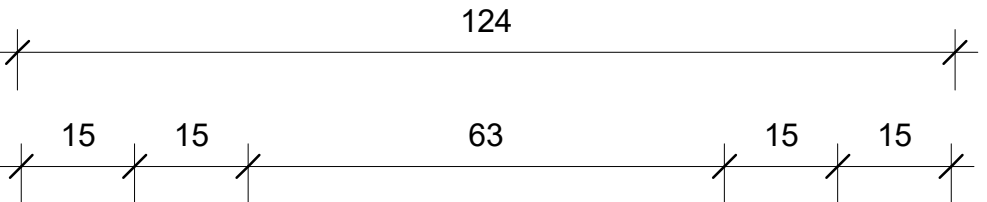
Scale

2 x 15mm thick JUMBO Fire Boards in single lengths to suit height, butt jointed and secured to Studding with 25mm drywall screws at maximum 220mm centres

2 x 15mm thick JUMBO Fire Boards in single lengths to suit height, butt jointed and secured to Studding with 25mm drywall screws at maximum 220mm centres

PW09

Keynote Legend	
Key Value	Keynote Text
PW09	Pelican Systems JUMBO FireWALL 63/120 with overall thickness of 124mm, with 63 x 35mm JUMBO Studs at 600mm centres friction fitted into head Track and floor Track and clad on both sides with a double layer of 15mm thick Fire Resistant JUMBO Plasterboard fixed at 220mm centres using 25mm JUMBO Drywall Screws on the base layer and 41mm JUMBO Drywall Screws on the face layer, all plasterboard joints must overlap. All exterior joints to be covered with JUMBO Tape and finished with two layers of JUMBO Jointing Plaster applied and lightly sanded down, leaving wall surface prepared for painting, all in accordance with the supplier's recommendations.



Ceiling or Floor Deck

64mm galvanised steel top track

63mm galvanised steel Studs fixed at 600mm centres to galvanised steel top and bottom track

PW09 - JUMBO FireWALL 63/120 - SECTION

Scale 1 : 1

PW09 - JUMBO FireWALL 63/120	
System	Partitions
Type of Product	JUMBO FireWALL 63/120
Recommended Areas	Fire Exits / Voids / 2 hour fire Wall
Technical Spec	* 63mm Stud and Track * 15mm (x2) JUMBO Fire Boards on both side of Stud and Track
Material	0,45mm Galvanized Steel with Z100 Coating
Picture	
Overall Thickness	124 mm
Colour Options	To be painted.
Building material information	N/A
Fire Protection	2 Hour Fire Rating
Sound absorption	N/A
Sound attenuation	N/A
Sound insulation	N/A
Practical sound absorption coefficient (α _p)	
Light reflectance	N/A
Thermal conductivity	N/A
Air permeability	N/A
Humidity	N/A
Green Rating	N/A
Specifications	Pelican Systems JUMBO FireWall 63/120 with overall thickness of 124mm, with 63 x 35mm JUMBO Studs at 600mm centres friction fitted into head Track and floor Track and clad on both sides with a double layer of 15mm thick Fire Resistant JUMBO Plasterboard fixed at 220mm centres using 25mm JUMBO Drywall Screws on the base layer and 41mm JUMBO Drywall Screws on the face layer, all plasterboard joints must overlap. All exterior joints to be covered with JUMBO Tape and finished with two layers of JUMBO Jointing Plaster applied and lightly sanded down, leaving wall surface prepared for painting, all in accordance with the supplier's recommendations.
Notes	• The specification is based on a height restriction of up to 3.6 Metres high. • In accordance with SANS 10177-2-FR120 (Non-load Bearing)



pelican systems
ceiling and partitioning specialists...

Head Office / Durban Branch | 765 / 793 Chris Hani Road, Durban, Redhill | 031 563 7307

Find us online at www.pelican.co.za or any of these social media sites

