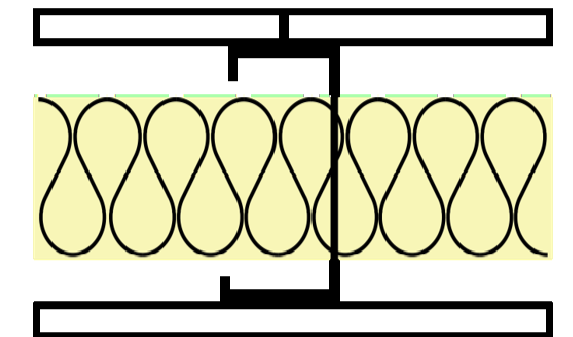
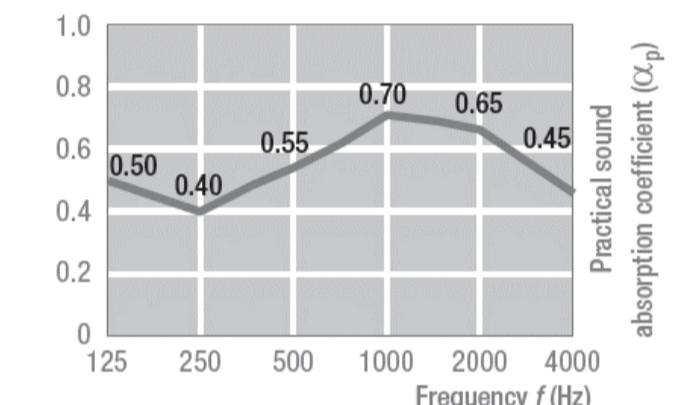
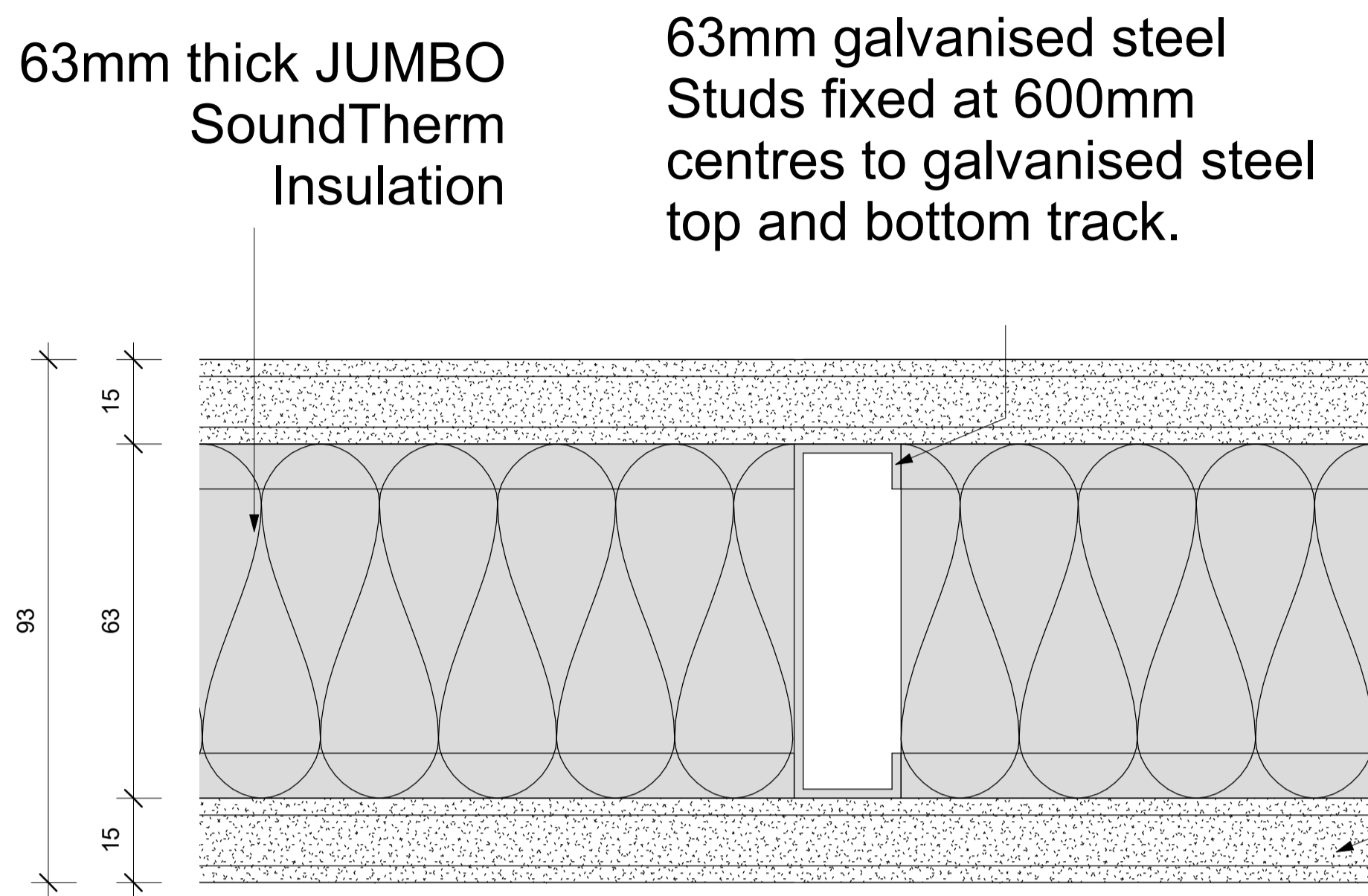


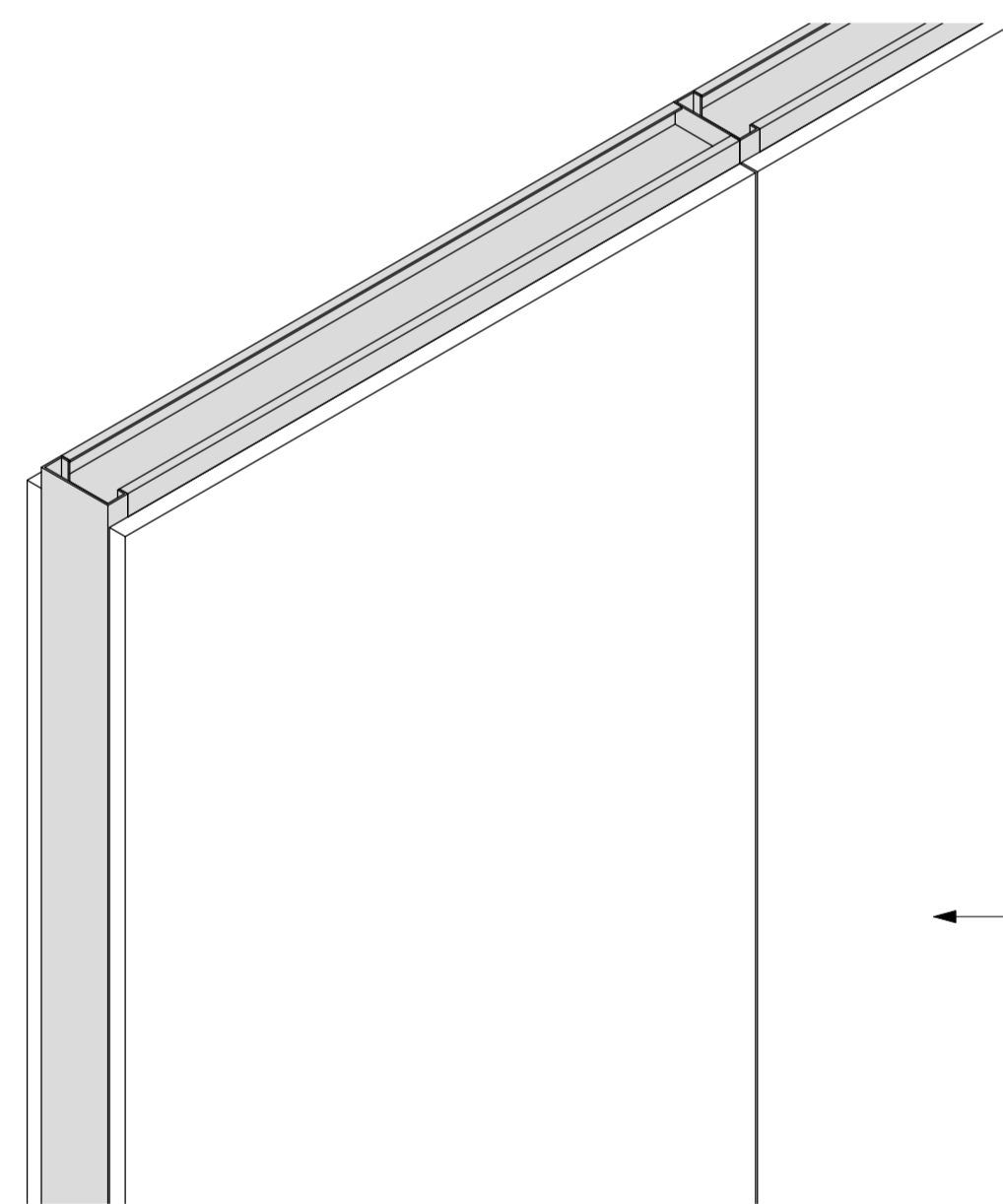
System	Partitions
Type of Product	JUMBO AcousticWALL 63/60/S44
Recommended Areas	Offices / Light weight Solution / Dry Areas / 1 Hour Fire Solution/Acoustic Solution
Technical Spec	* 63mm Stud and Track * 15mm JUMBO Plaster Board on each side of Stud and Track * 63mm thick JUMBO SoundTherm Insulation
Material	0,45mm Galvanized Steel with Z100 Coating
Picture	
Overall Thickness	93 mm
Colour Options	To be painted.
Building material information	N/A
Fire Protection	1 Hour Fire Rating
Sound absorption	N/A
Sound attenuation	44db
Sound insulation	N/A
Practical sound absorption coefficient (α _p)	
Light reflectance	N/A
Thermal conductivity	N/A
Air permeability	N/A
Humidity	N/A
Green Rating	N/A
Specifications	Pelican Systems JUMBO AcousticWALL 63/60/S44 with overall thickness of 93mm comprising internal framing formed of 63mm galvanized steel Studs fixed at 600mm centres to galvanized steel top and bottom Track with 63mm thick JUMBO SoundTherm Insulation to be installed in the cavity, including any additional steel Studding necessary at door openings, glazed or other apertures, abutments, ends, corners, etc. and covered with 15mm thick JUMBO FR plasterboards in single lengths to suit height, butt jointed and secured to Studding with 25mm JUMBO drywall screws at maximum 220mm centres, the joints taped over and flushed over with JUMBO jointing compound prepared for painting.
Notes	• The specification is based on a height restriction of up to 3.6 Metres high.

Keynote Legend	
Key Value	Keynote Text
PW08	Pelican Systems JUMBO FireWALL 63/30/S44 with overall thickness of 93mm comprising internal framing formed of 63mm galvanized steel Studs fixed at 600mm centres to galvanized steel top and bottom Track with 63mm thick JUMBO SoundTherm Insulation to be installed in the cavity, including any additional steel Studding necessary at door openings, glazed or other apertures, abutments, ends, corners, etc. and covered with 15mm thick JUMBO FR plasterboards in single lengths to suit height, butt jointed and secured to Studding with 25mm JUMBO Drywall Screws at maximum 220mm centres, the joints taped over and flushed over with JUMBO jointing compound prepared for painting.



PW08 - JUMBO AcousticWALL 63/60/S44 - PLAN

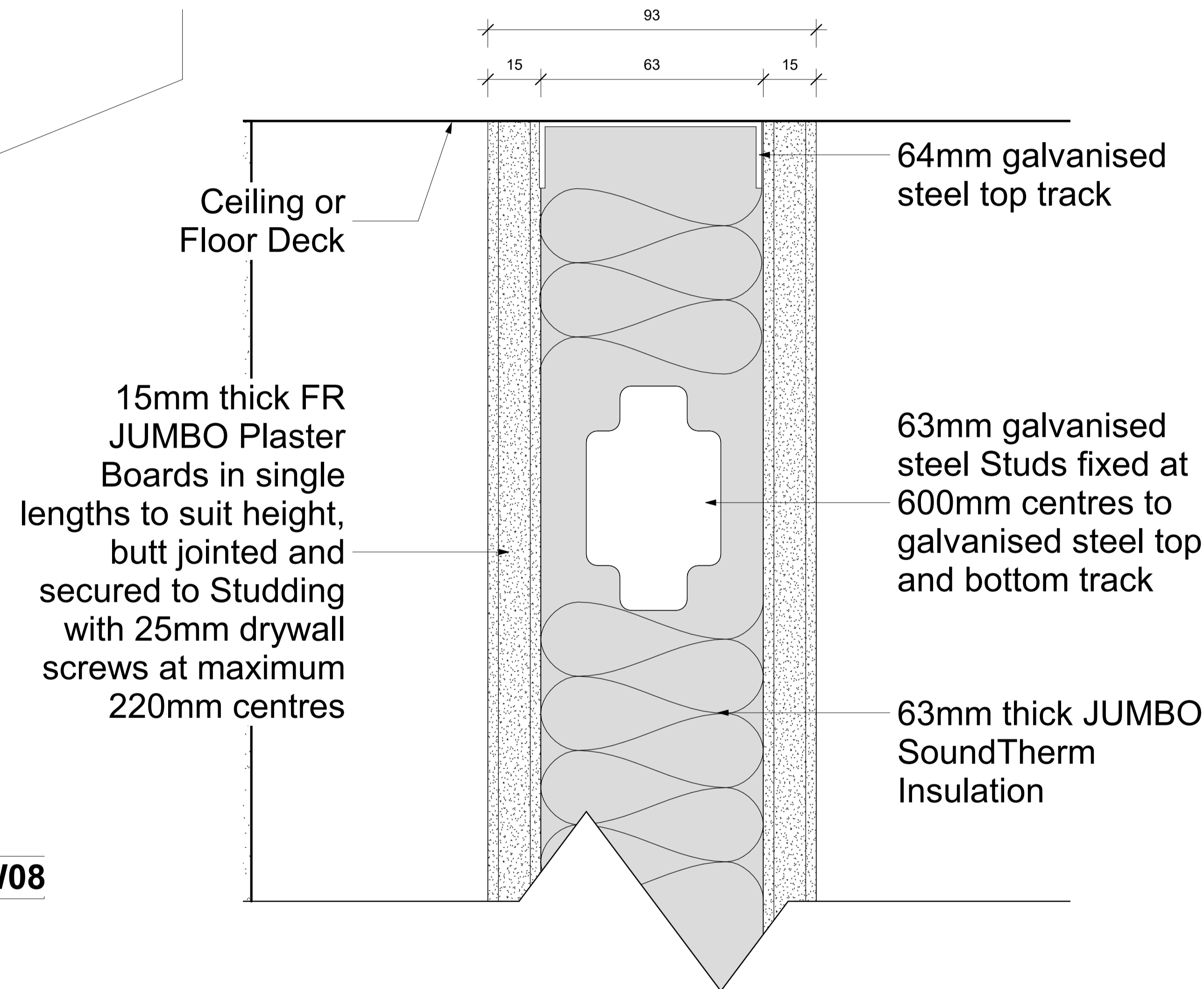
Scale 1 : 1



PW08 - JUMBO AcousticWALL 63/60/S44 - 3D

Scale

15mm thick FR JUMBO Plaster Boards in single lengths to suit height, butt jointed and secured to Studding with 25mm drywall screws at maximum 220mm centres



PW08 - JUMBO AcousticWALL 63/60/S44 - SECTION

Scale 1 : 1



pelican systems

ceiling and partitioning specialists...

Head Office / Durban Branch | 765 / 793 Chris Hani Road, Durban, Redhill | 031 563 7307

Find us online at www.pelican.co.za or any of these social media sites

