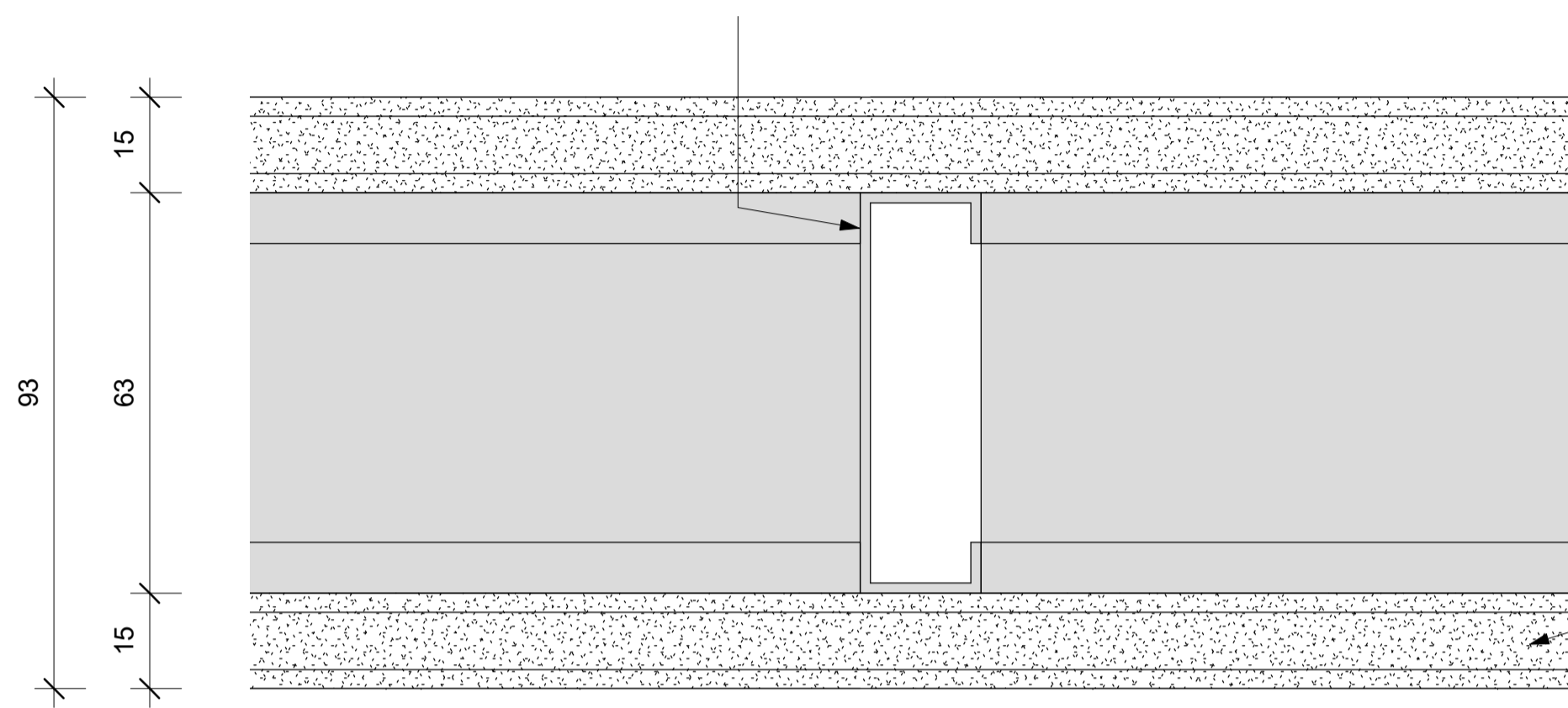


63mm galvanised steel Studs fixed at 600mm centres to galvanised steel top and bottom track.

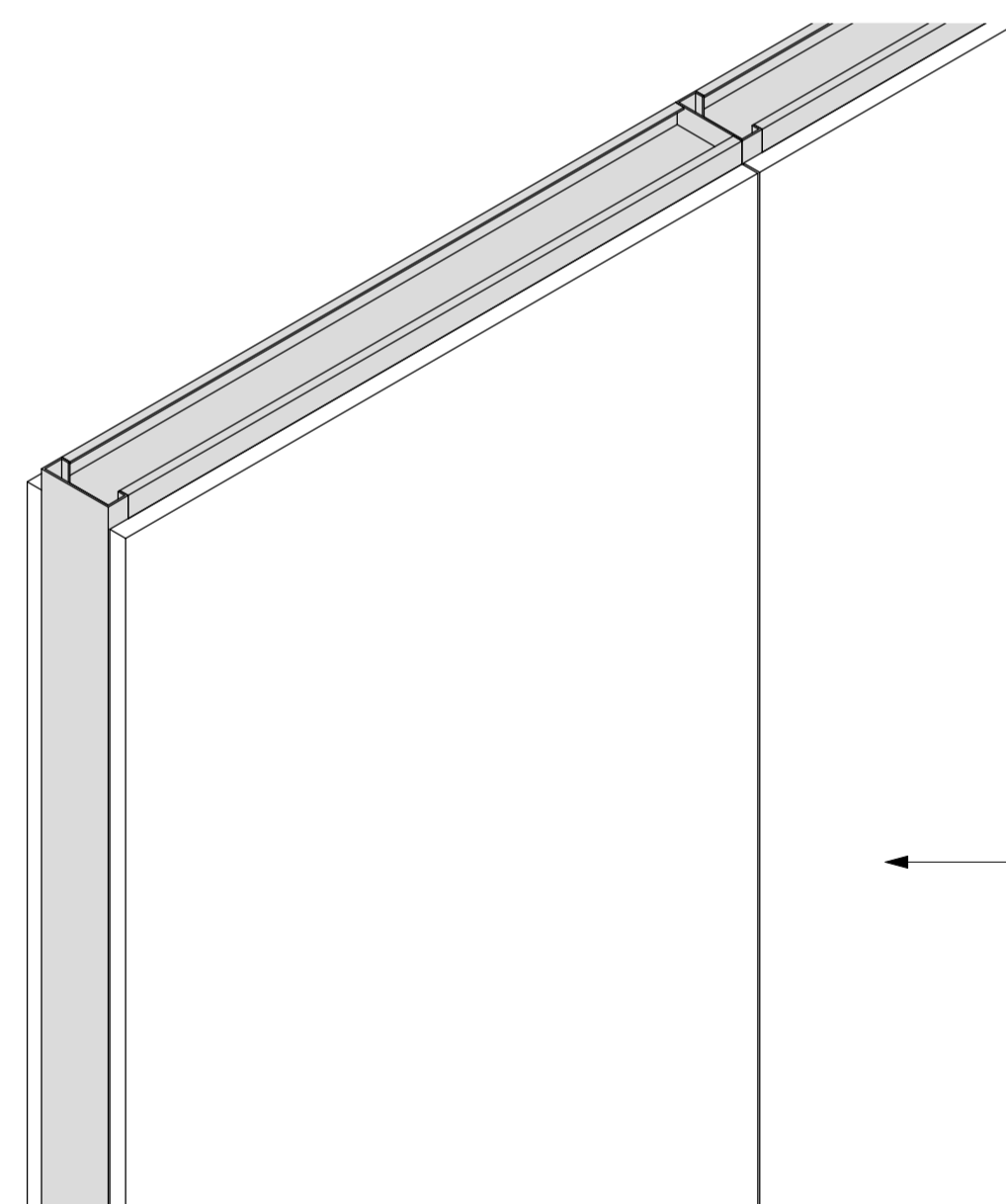


15mm thick JUMBO Fire Boards in single lengths to suit height, butt jointed and secured to Studding with 25mm drywall screws at maximum 220mm centres

Keynote Legend	
Key Value	Keynote Text
PW07	Pelican Systems JUMBO® FireWall 63/60 with overall thickness of 93mm, with 63mm JUMBO® Studs at 600mm centres friction fitted into head Track and floor Track and clad on both sides with a single layer of 15mm thick Fire Resistant JUMBO® Board fixed at 220mm centres using 25mm Drywall Screws. All exterior joints to be covered with JUMBO® Tape and finished with two layers of JUMBO® Jointing Plaster

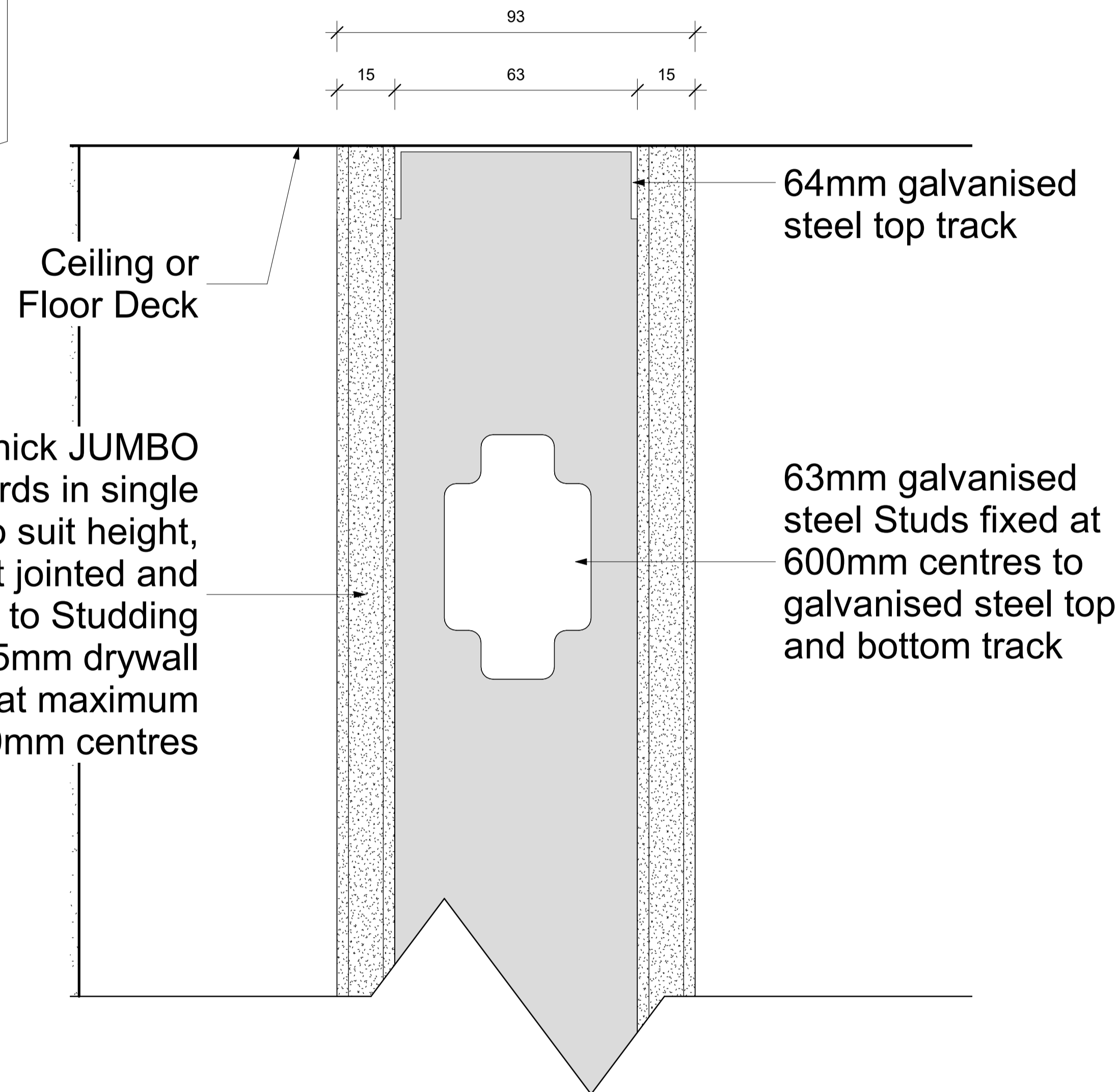
PW07 - JUMBO FireWALL 63/60 - PLAN

Scale 1 : 1



PW07 - JUMBO FireWALL 63/60 - 3D

Scale



PW07 - JUMBO FireWALL 63/60 - SECTION

Scale 1 : 1

PW07 - JUMBO FireWALL 63/60

System	Partitions
Type of Product	JUMBO FireWALL 63/60
Recommended Areas	Offices / Light weight Solution / Dry Areas / 1 Hour Fire Solution
Technical Spec	* 63mm Stud and Track * 15mm JUMBO Fire Boards on each side of Stud and Track
Material	0,45mm Galvanized Steel with Z100 Coating
Picture	
Overall Thickness	93 mm
Colour Options	To be painted.
Building material information	N/A
Fire Protection	1 Hour Fire Rating
Sound absorption	N/A
Sound attenuation	N/A
Sound insulation	N/A
Practical sound absorption coefficient (α <sub>p</sub> )	
Light reflectance	N/A
Thermal conductivity	N/A
Air permeability	N/A
Humidity	N/A
Green Rating	N/A
Specifications	Pelican Systems JUMBO® FireWall 63/60 with overall thickness of 93mm, with 63mm JUMBO® Studs at 600mm centres friction fitted into head Track and floor Track and clad on both sides with a single layer of 15mm thick Fire Resistant JUMBO® Board fixed at 220mm centres using 25mm Drywall Screws. All exterior joints to be covered with JUMBO® Tape and finished with two layers of JUMBO® Jointing Plaster applied and lightly sanded down, leaving wall surface prepared for painting, all in accordance with the supplier's recommendations.
Notes	<ul style="list-style-type: none"> <li>The specification is based on a height restriction of up to 3.6 Metres high.</li> <li>In accordance with SANS 10177-2-FR60 (Non-load Bearing)</li> </ul>



## pelican systems

ceiling and partitioning specialists...

Head Office / Durban Branch | 765 / 793 Chris Hani Road, Durban, Redhill | 031 563 7307

Find us online at [www.pelican.co.za](http://www.pelican.co.za) or any of these social media sites