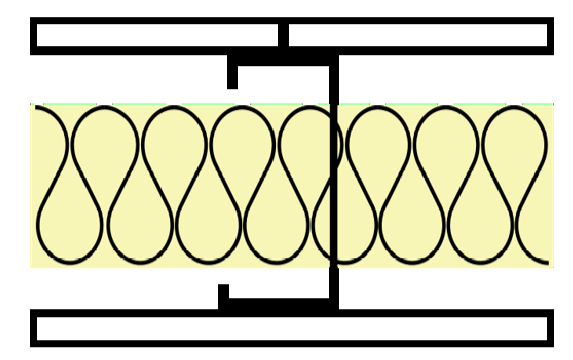
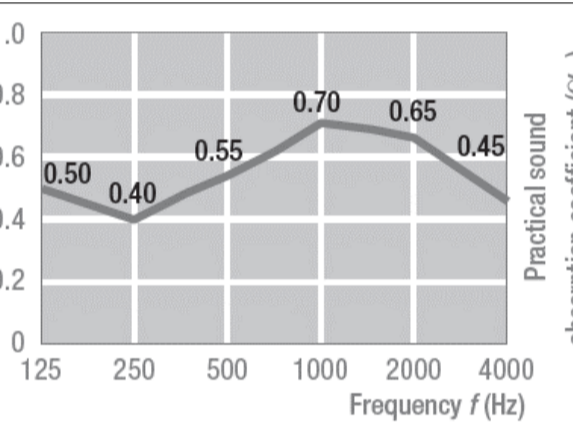
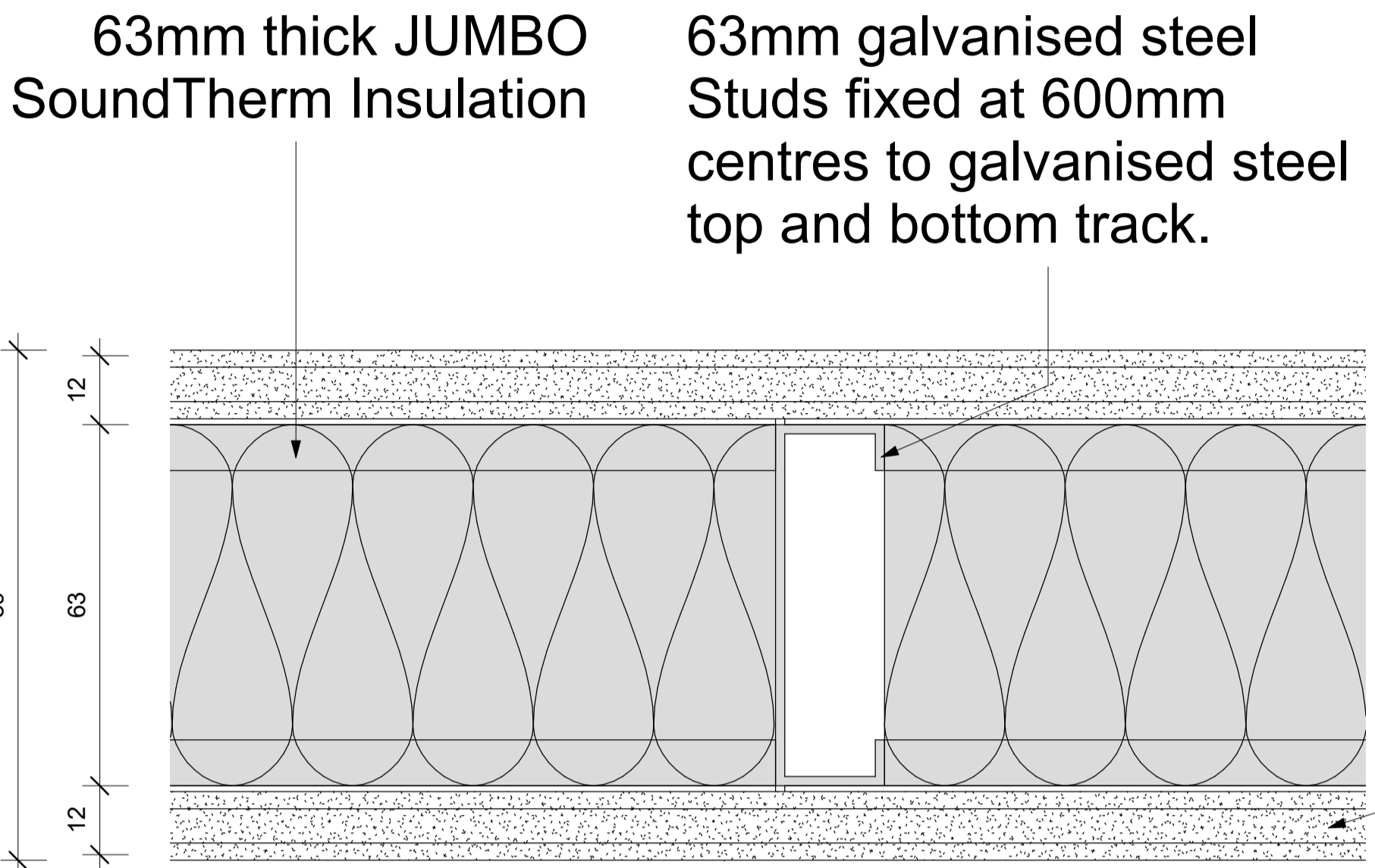
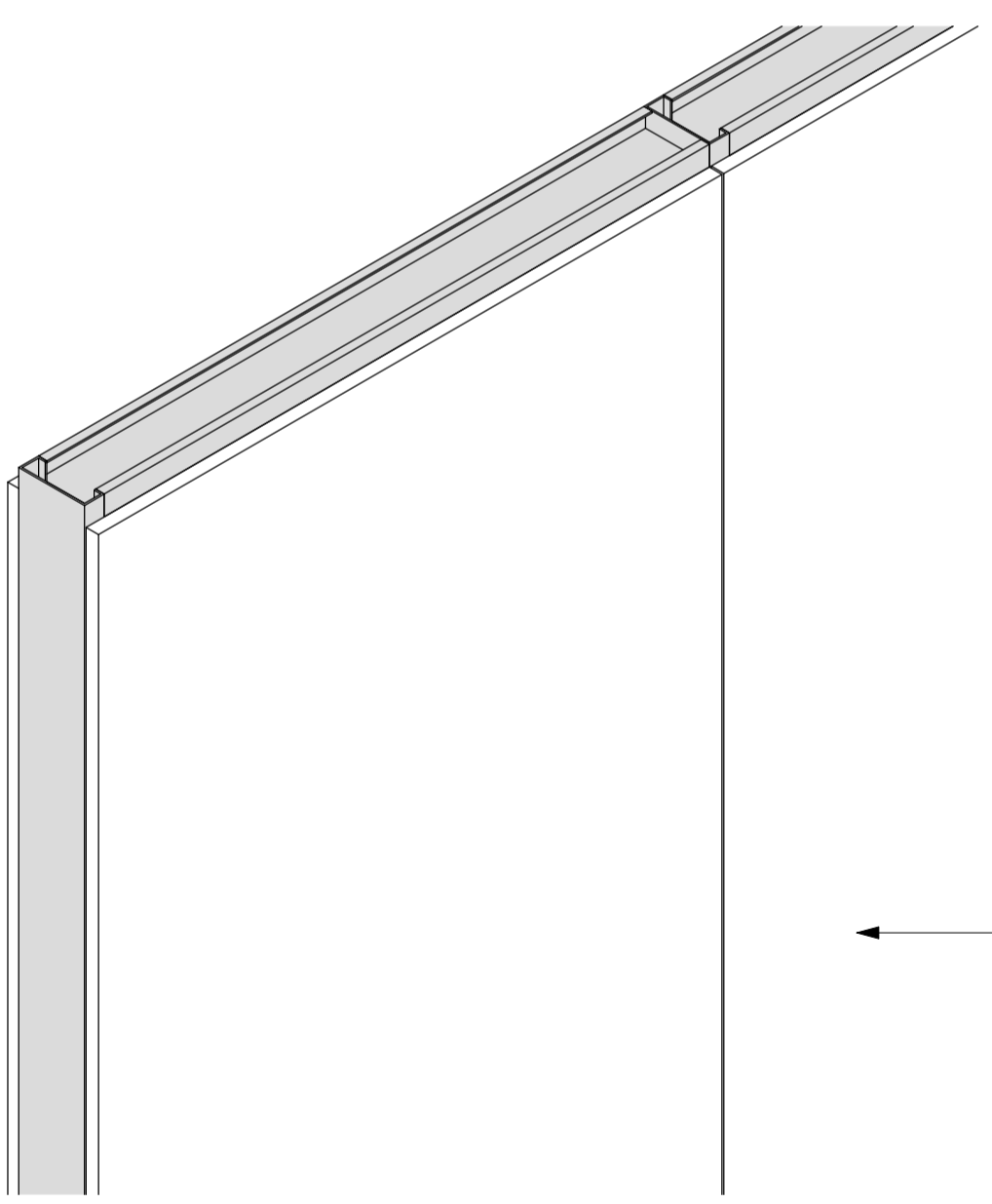


PW06 - JUMBO MoistureWALL 63/30/S44	
System	Partitions
Type of Product	JUMBO MoistureWALL 63/30/S44
Recommended Areas	Wet Areas
Technical Spec	* 63mm Stud and Track * 63mm JUMBO SoundTherm * 12mm JUMBO Moisture Board on each side of Stud and Track
Material	0,45mm Galvanized Steel with Z100 Coating
Picture	
Overall Thickness	89 mm
Colour Options	To be painted.
Building material information	N/A
Fire Protection	30 Minute Fire Rating
Sound absorption	N/A
Sound attenuation	44db
Sound insulation	N/A
Practical sound absorption coefficient (α _p)	
Light reflectance	N/A
Thermal conductivity	N/A
Air permeability	N/A
Humidity	N/A
Green Rating	N/A
Specifications	Pelican Systems JUMBO MoistureWALL 63/30/S44 with overall thickness of 89mm comprising internal framing formed of 63mm galvanised steel Studs fixed at 600mm centres to galvanised steel top and bottom Track with 63mm thick JUMBO SoundTherm Insulation in the cavity of the of the partition, including any additional steel Studding necessary at door openings, glazed or other apertures, abutments, ends, corners, etc. and covered with 12mm thick JUMBO Moisture Plasterboards in single lengths to suit height, butt jointed and secured to Studding with 25mm JUMBO drywall screws at maximum 220mm centres, the joints taped over and flushed over with JUMBO jointing compound prepared for painting.
Notes	<ul style="list-style-type: none"> The specification is based on a height restriction of up to 3.6 Metres high. Reduce Spacing to 400mm when using Tile Finish

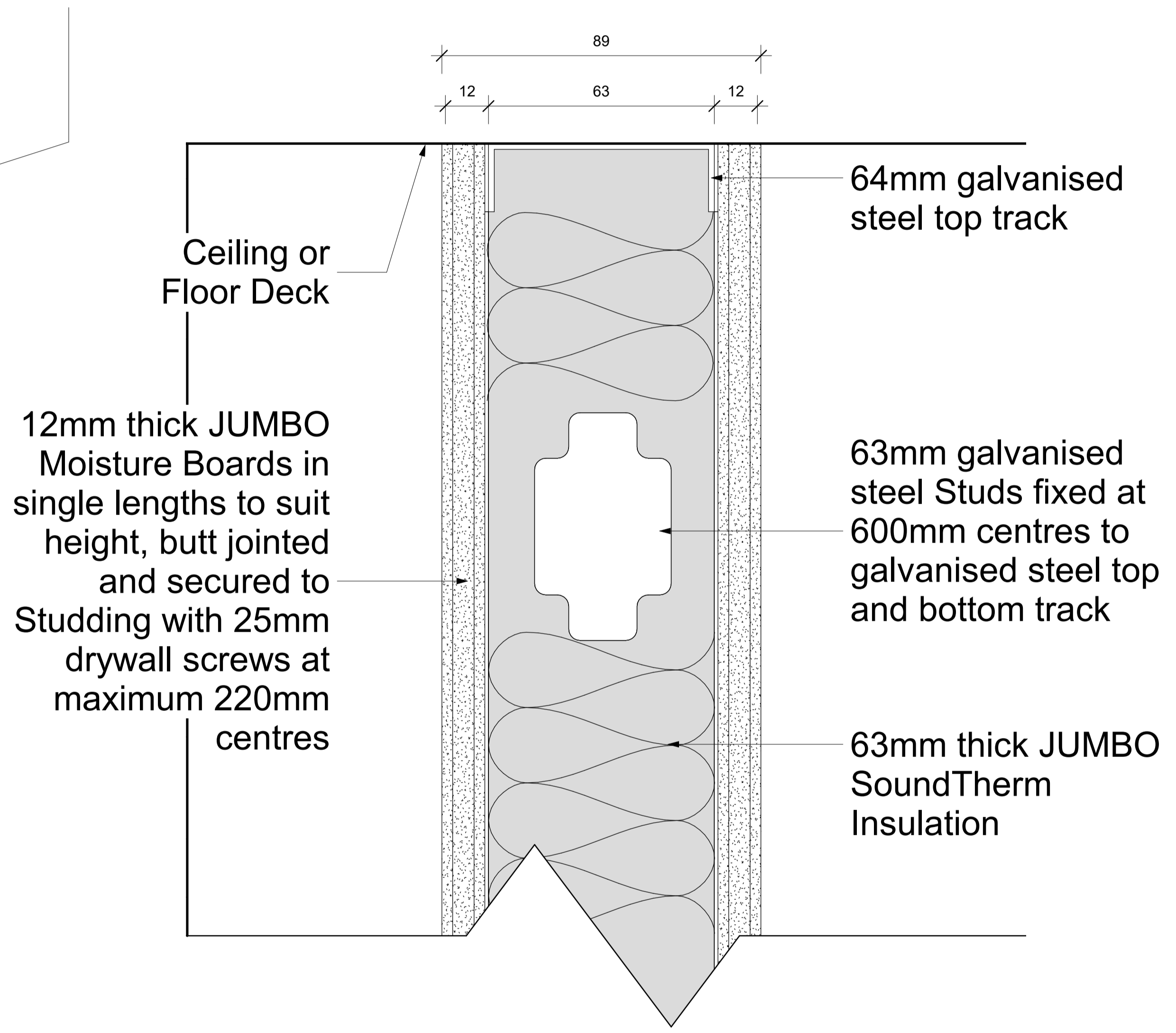
Keynote Legend	
Key Value	Keynote Text
PW06	Pelican Systems JUMBO MoistureWALL 63/30/S44 with overall thickness of 89mm comprising internal framing formed of 63mm galvanised steel Studs fixed at 600mm centres to galvanised steel top and bottom Track with 63mm thick JUMBO SoundTherm Insulation in the cavity of the of the partition, including any additional steel Studding necessary at door openings, glazed or other apertures, abutments, ends, corners, etc. and covered with 12mm thick JUMBO Moisture Plasterboards in single lengths to suit height, butt jointed and secured to Studding with 25mm JUMBO Drywall Screws at maximum 220mm centres, the joints taped over and flushed over with JUMBO jointing compound prepared for painting



PW06 - JUMBO MoistureWALL 63/30/S44 - PLAN
Scale 1 : 1



PW06 - JUMBO MoistureWALL 63/30/S44 - 3D
Scale



PW06 - JUMBO MoistureWALL 63/30/S44 - SECTION
Scale 1 : 1



pelican systems
ceiling and partitioning specialists...

Head Office / Durban Branch | 765 / 793 Chris Hani Road, Durban, Redhill | 031 563 7307
Find us online at www.pelican.co.za or any of these social media sites

