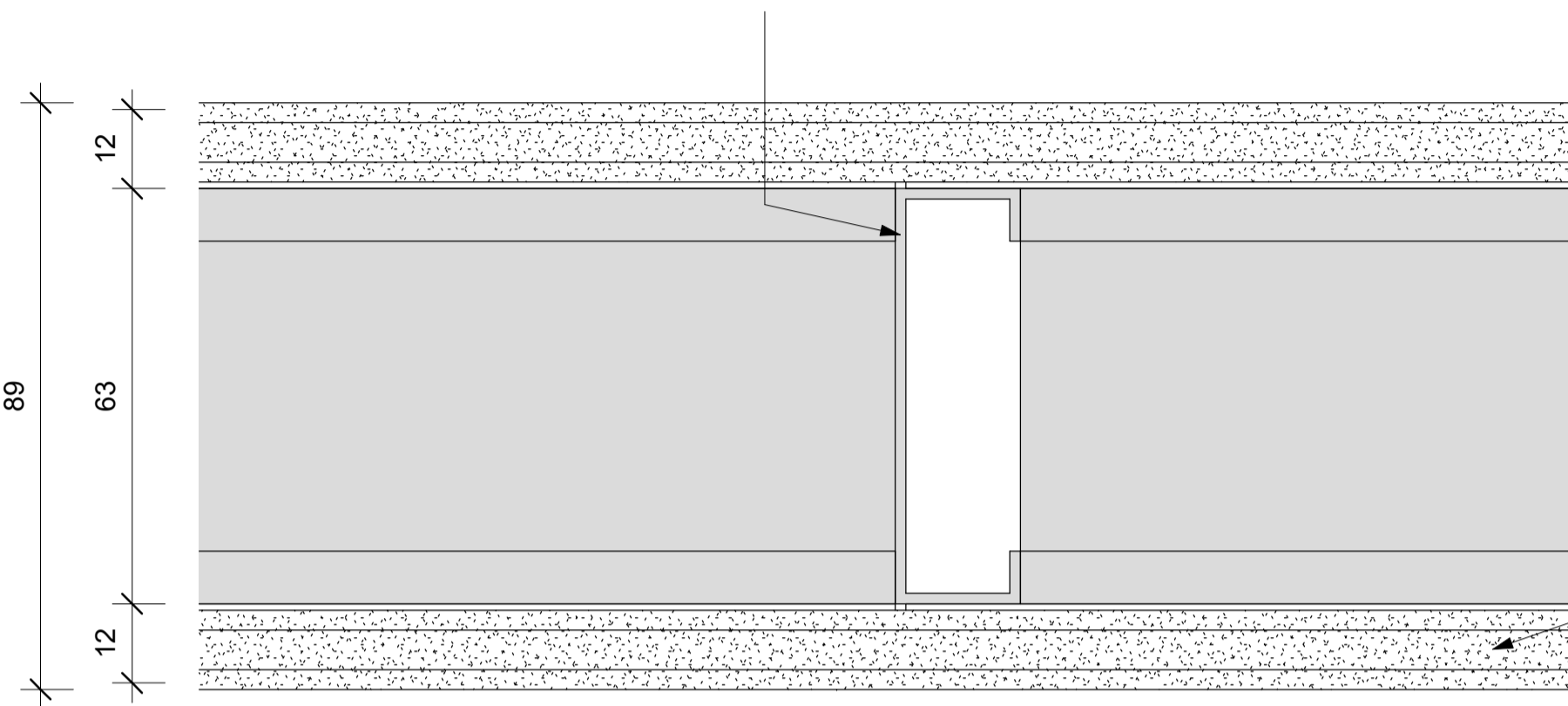


63mm galvanised steel Studs fixed at 600mm centres to galvanised steel top and bottom track.

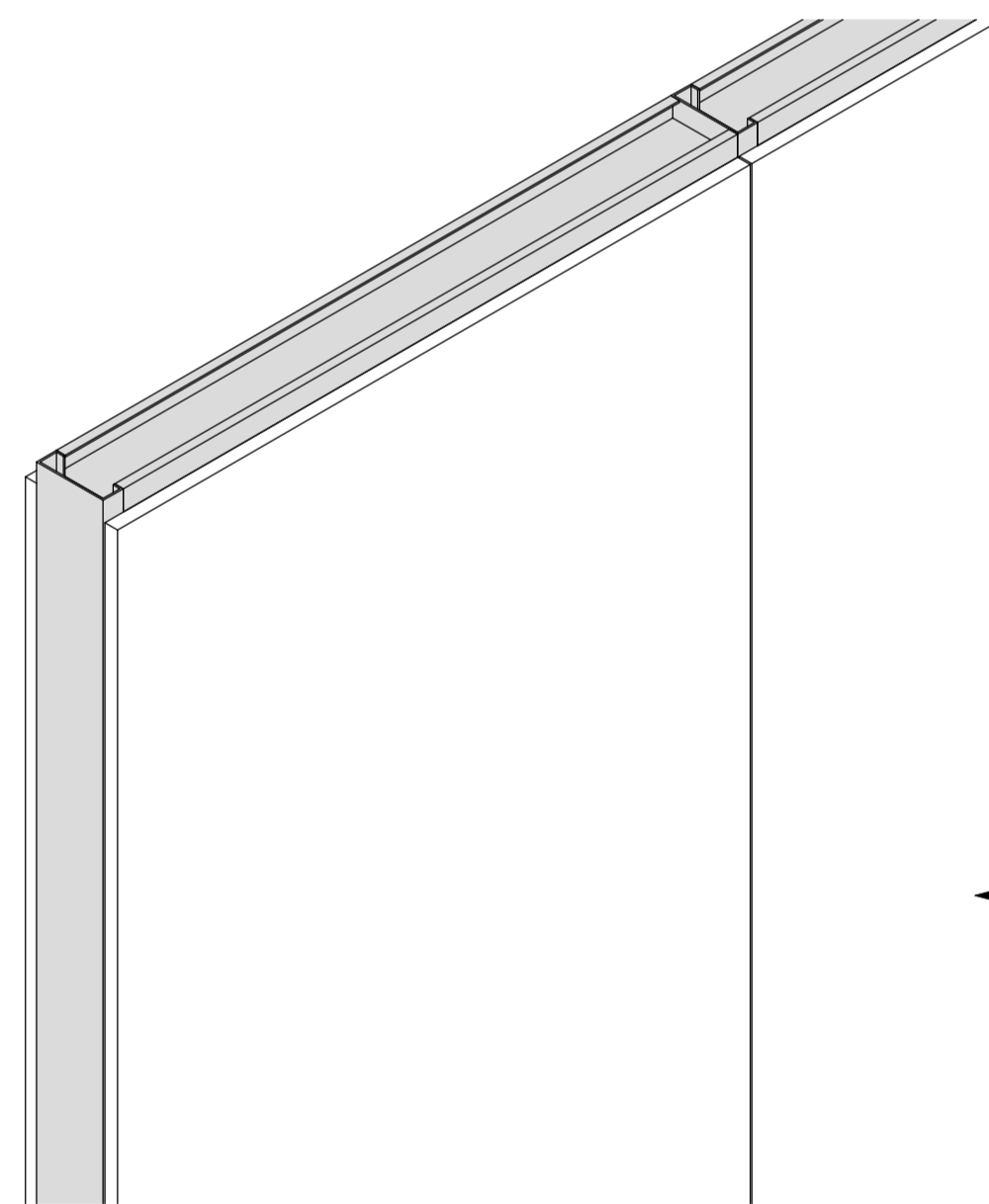
12mm thick JUMBO Plaster Boards in single lengths to suit height, butt jointed and secured to Studding with 25mm drywall screws at maximum 220mm centres

Keynote Legend	
Key Value	Keynote Text
PW04	Pelican Systems JUMBO DryWALL 63/30 with overall thickness of 89mm comprising internal framing formed of 63mm galvanised steel Studs fixed at 600mm centres to galvanised steel top and bottom Track, including any additional steel Studding necessary at door openings, glazed or other apertures, abutments, ends, corners, etc. and covered with 12mm thick JUMBO Plaster Boards in single lengths to suit height, butt jointed and secured to Studding with 25mm Drywall Screws at maximum 220mm centres, the joints taped over and flushed over with jointing compound prepared for painting.



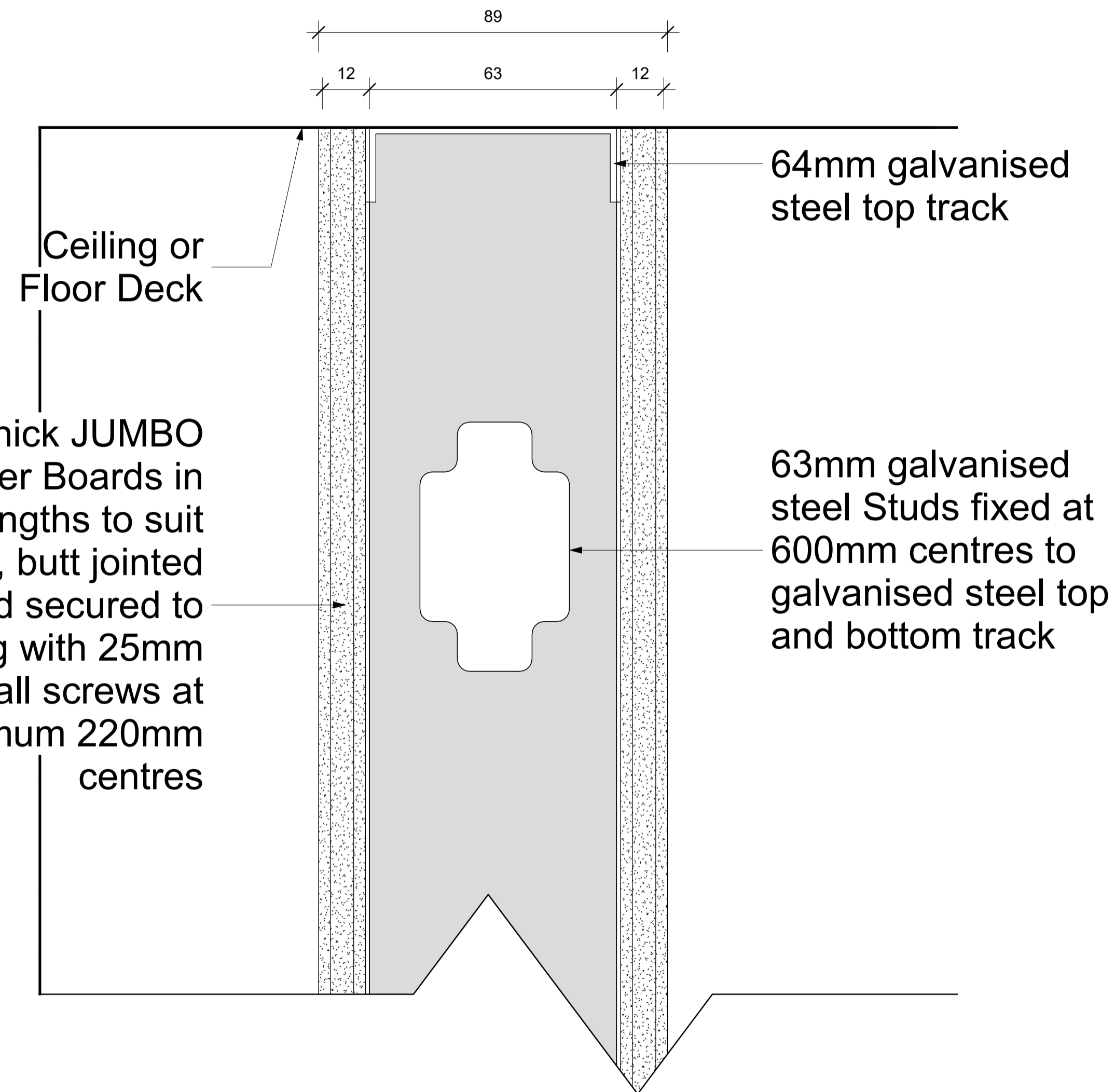
PW04 - JUMBO DryWALL 63/30 - PLAN

Scale 1 : 1



PW04 - JUMBO DryWALL 63/30 - 3D

Scale



PW04 - JUMBO DryWALL 63/30 - PLAN

Scale 1 : 1

PW04 - JUMBO DryWALL 63/30	
System	Partitions
Type of Product	JUMBO DryWALL 63/30
Recommended Areas	Offices / Light weight Solution / Dry Areas
Technical Spec	* 63mm Stud and Track * 12mm JUMBO Board on each side of Stud and Track
Material	0,45mm Galvanized Steel with Z100 Coating
Picture	
Overall Thickness	89 mm
Colour Options	To be painted.
Building material information	N/A
Fire Protection	30 Minute Fire Rating
Sound absorption	N/A
Sound attenuation	38db
Sound insulation	N/A
Practical sound absorption coefficient (α _p)	
Light reflectance	N/A
Thermal conductivity	N/A
Air permeability	N/A
Humidity	N/A
Green Rating	N/A
Specifications	Pelican Systems JUMBO DryWALL 63/30 with overall thickness of 89mm comprising internal framing formed of 63mm galvanised steel Studs fixed at 600mm centres to galvanised steel top and bottom Track, including any additional steel Studding necessary at door openings, glazed or other apertures, abutments, ends, corners, etc. and covered with 12mm thick JUMBO Plaster Boards in single lengths to suit height, butt jointed and secured to Studding with 25mm drywall screws at maximum 220mm centres, the joints taped over and flushed over with jointing compound prepared for painting.
Notes	The specification is based on a height restriction of up to 3.6 Metres high.



pelican systems

ceiling and partitioning specialists...

Head Office / Durban Branch | 765 / 793 Chris Hani Road, Durban, Redhill | 031 563 7307

Find us online at www.pelican.co.za or any of these social media sites