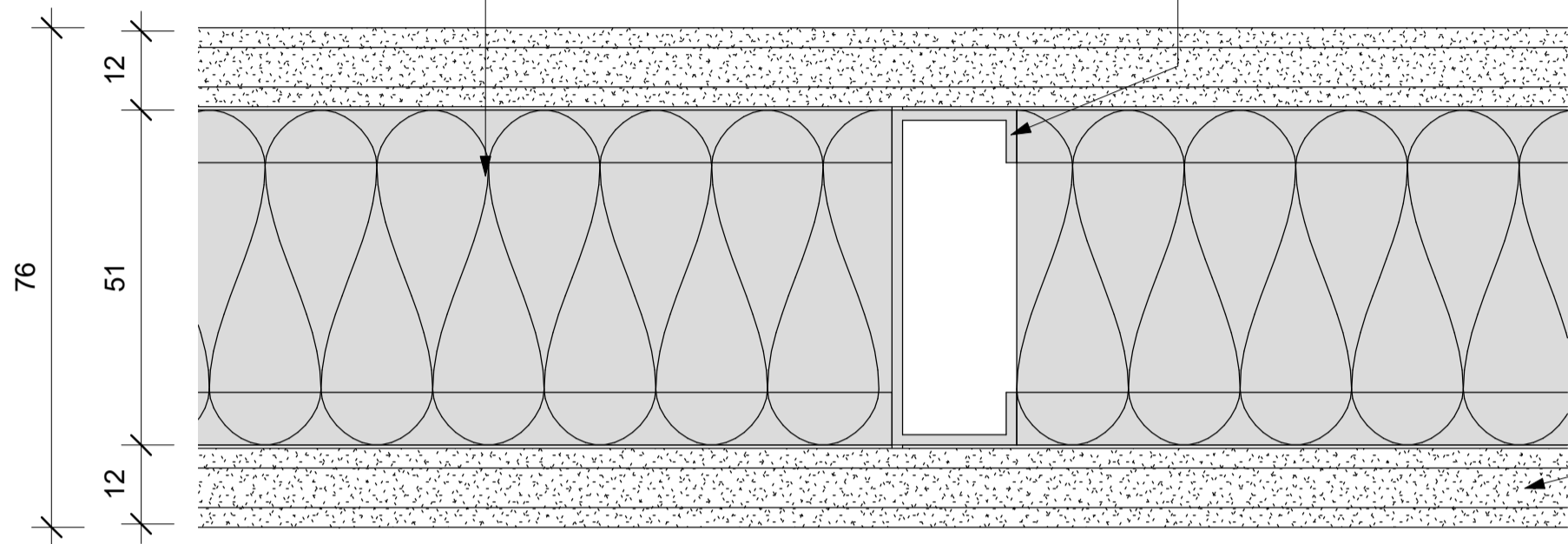


51mm thick JUMBO SoundTherm Insulation

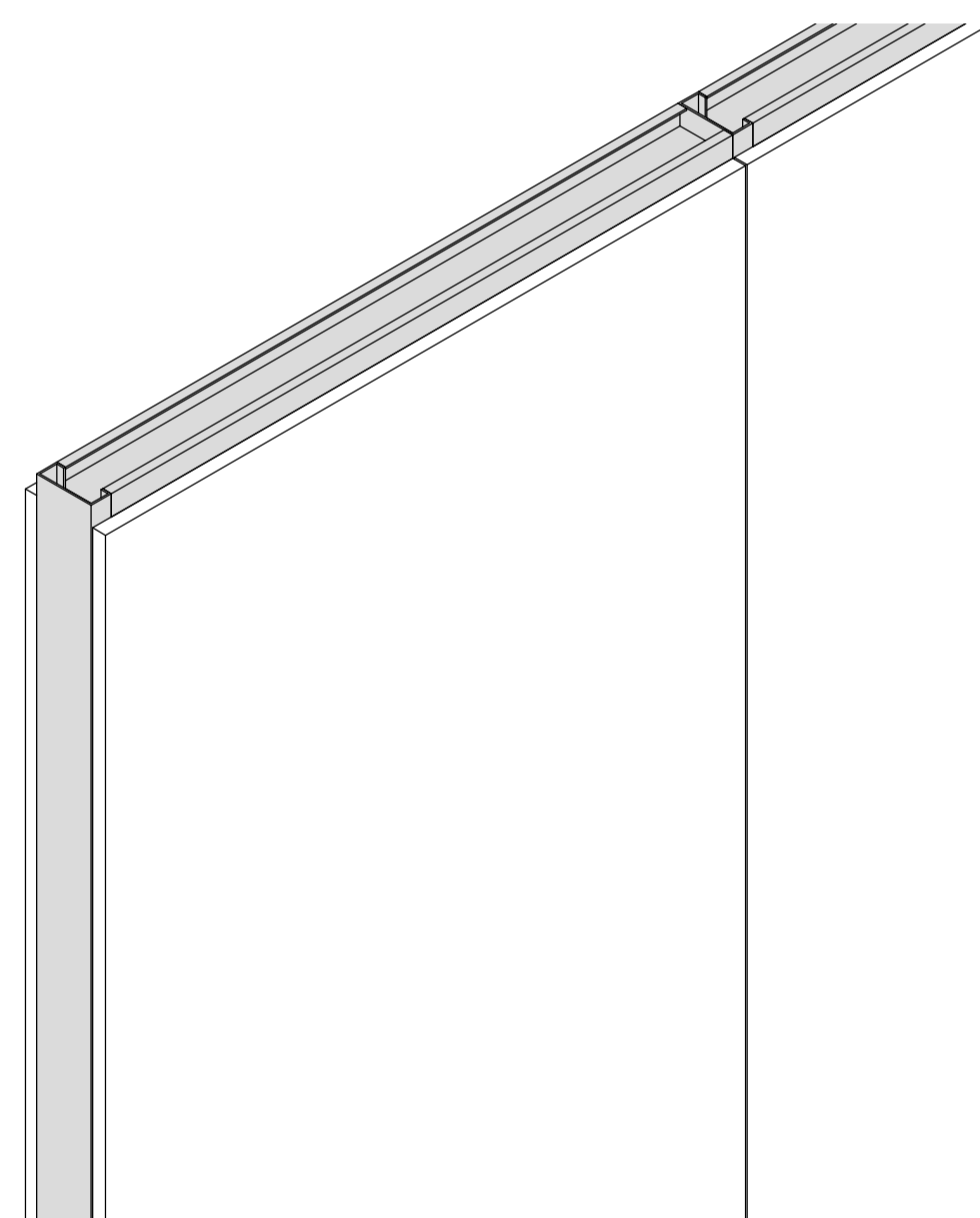
51mm galvanised steel Studs fixed at 600mm centres to galvanised steel top and bottom track.

12mm thick JUMBO Moisture Boards in single lengths to suit height, butt jointed and secured to Studding with 25mm drywall screws at maximum 220mm centres



PW03 - JUMBO MoistureWALL 51/30 - PLAN

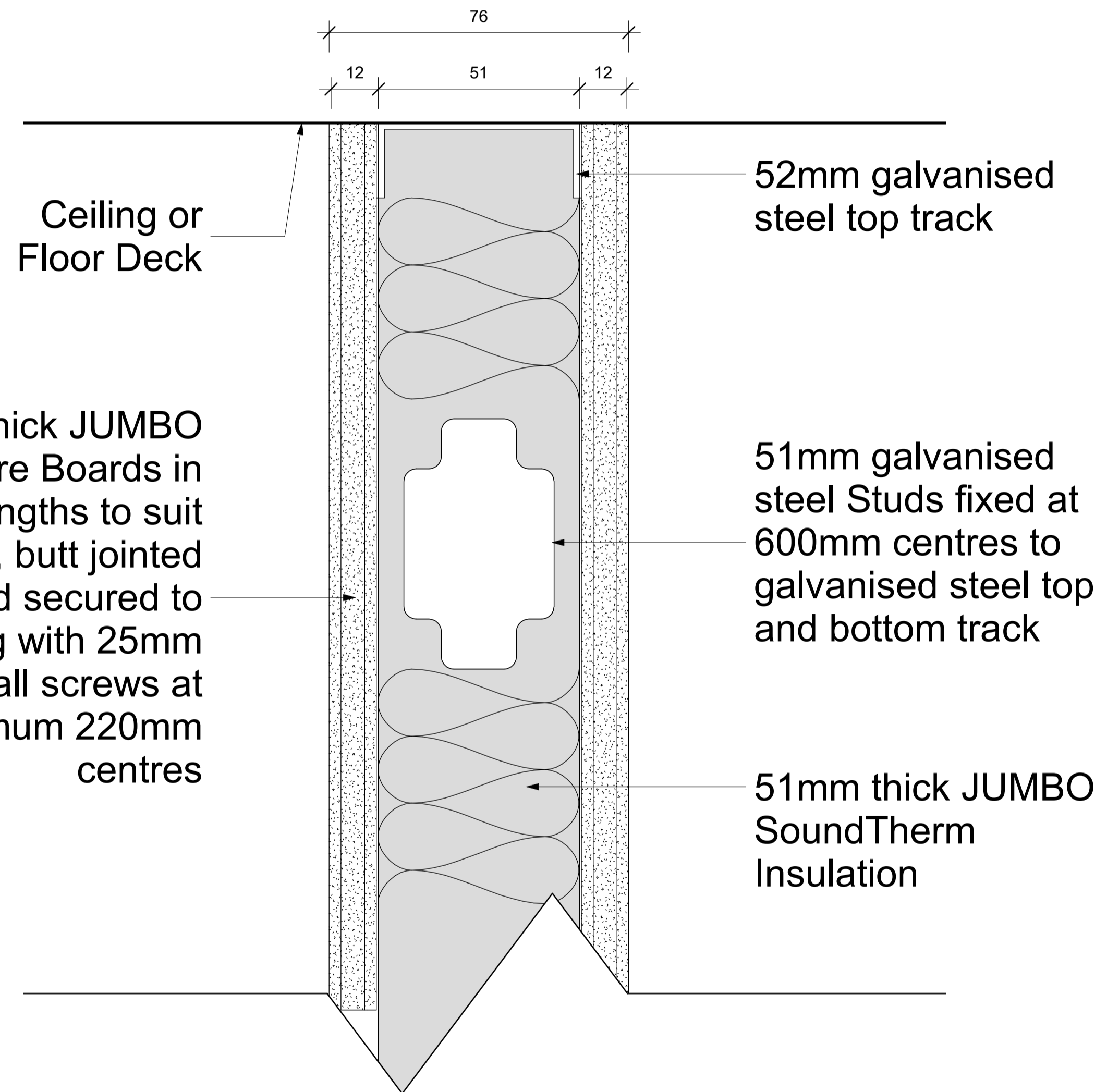
Scale 1 : 1



PW03 - JUMBO MoistureWALL 51/30 - 3D

Scale

Keynote Legend	
Key Value	Keynote Text
PW03	Pelican Systems JUMBO MoistureWALL 51/30 with overall thickness of 76mm comprising internal framing formed of 51mm galvanised steel Studs fixed at 600mm centres to galvanised steel top and bottom Track with 51mm thick JUMBO SoundTherm Insulation in the cavity of the of the partition, including any additional steel Studding necessary at door openings, glazed or other apertures, abutments, ends, corners, etc. and covered with 12mm thick JUMBO Moisture Boards in single lengths to suit height, butt jointed and secured to Studding with 25mm Drywall Screws at maximum 220mm centres, the joints taped over and flushed over with jointing compound prepared for painting.



PW03 - JUMBO MoistureWALL 51/30 - SECTION

Scale 1 : 1

PW03 - JUMBO MoistureWALL 51/30

System	Partitions
Type of Product	JUMBO MoistureWALL 51/30
Recommended Areas	Wet Areas
Technical Spec	* 51mm Stud and Track * 51 mm JUMBO SoundTherm * 12mm JUMBO Moisture Board on each side of Stud and Track
Material	0,45mm Galvanized Steel with Z100 Coating
Picture	
Overall Thickness	76 mm
Colour Options	To be painted.
Building material information	N/A
Fire Protection	30 Minute Fire Rating
Sound absorption	N/A
Sound attenuation	N/A
Sound insulation	N/A
Practical sound absorption coefficient (α <sub>p</sub> )	
Light reflectance	N/A
Thermal conductivity	N/A
Air permeability	N/A
Humidity	N/A
Green Rating	N/A
Specifications	Pelican Systems JUMBO MoistureWALL 51/30 with overall thickness of 76mm comprising internal framing formed of 51mm galvanised steel Studs fixed at 600mm centres to galvanised steel top and bottom Track with 51mm thick JUMBO SoundTherm Insulation in the cavity of the partition, including any additional steel Studding necessary at door openings, glazed or other apertures, abutments, ends, corners, etc. and covered with 12mm thick JUMBO Moisture Boards in single lengths to suit height, butt jointed and secured to Studding with 25mm drywall screws at maximum 220mm centres, the joints taped over and flushed over with jointing compound prepared for painting.
Notes	<ul style="list-style-type: none"> <li>The specification is based on a height restriction of up to 3 Metres high.</li> <li>No Tile Finish.</li> </ul>



## pelican systems

ceiling and partitioning specialists...

Head Office / Durban Branch | 765 / 793 Chris Hani Road, Durban, Redhill | 031 563 7307

Find us online at [www.pelican.co.za](http://www.pelican.co.za) or any of these social media sites

