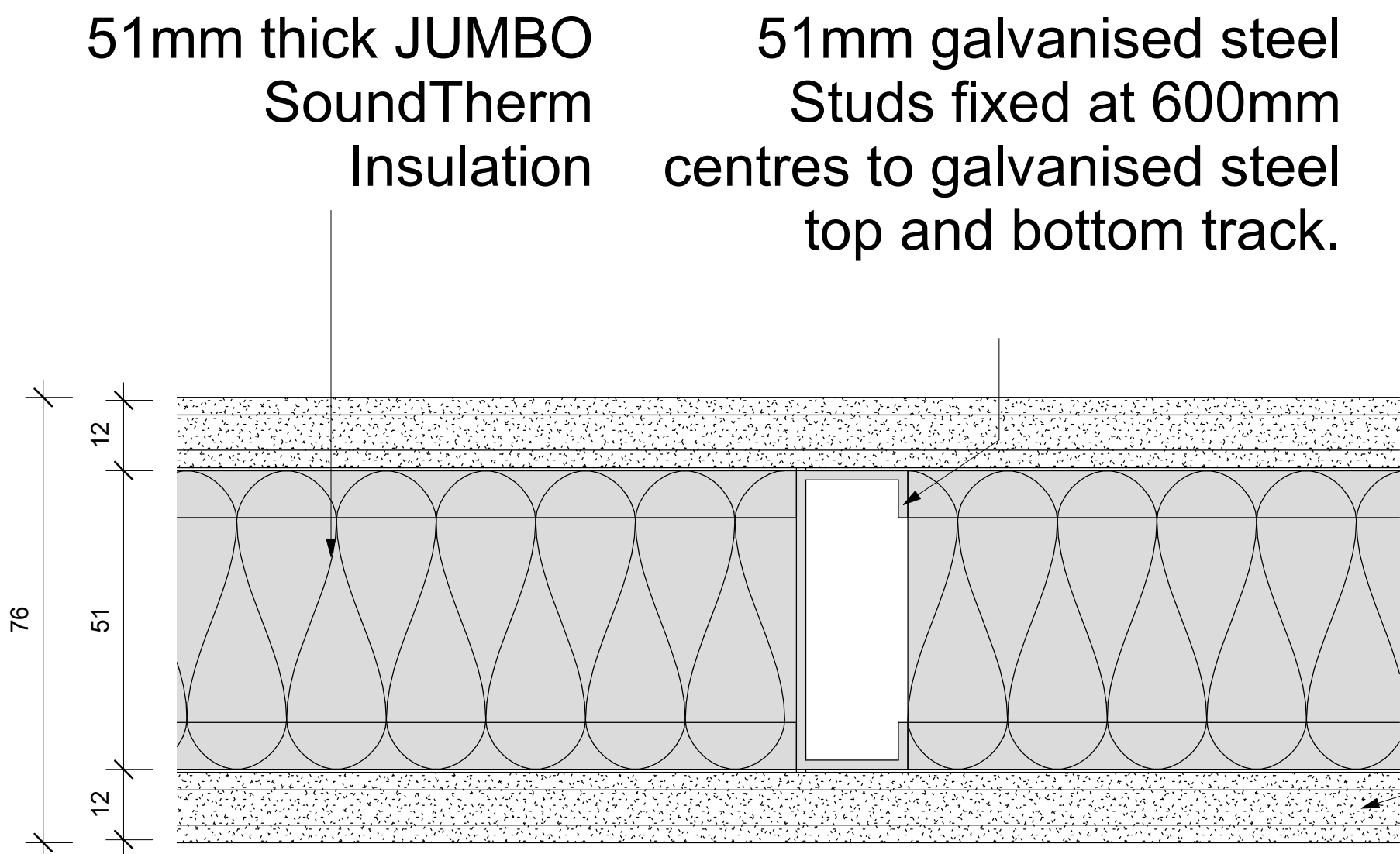
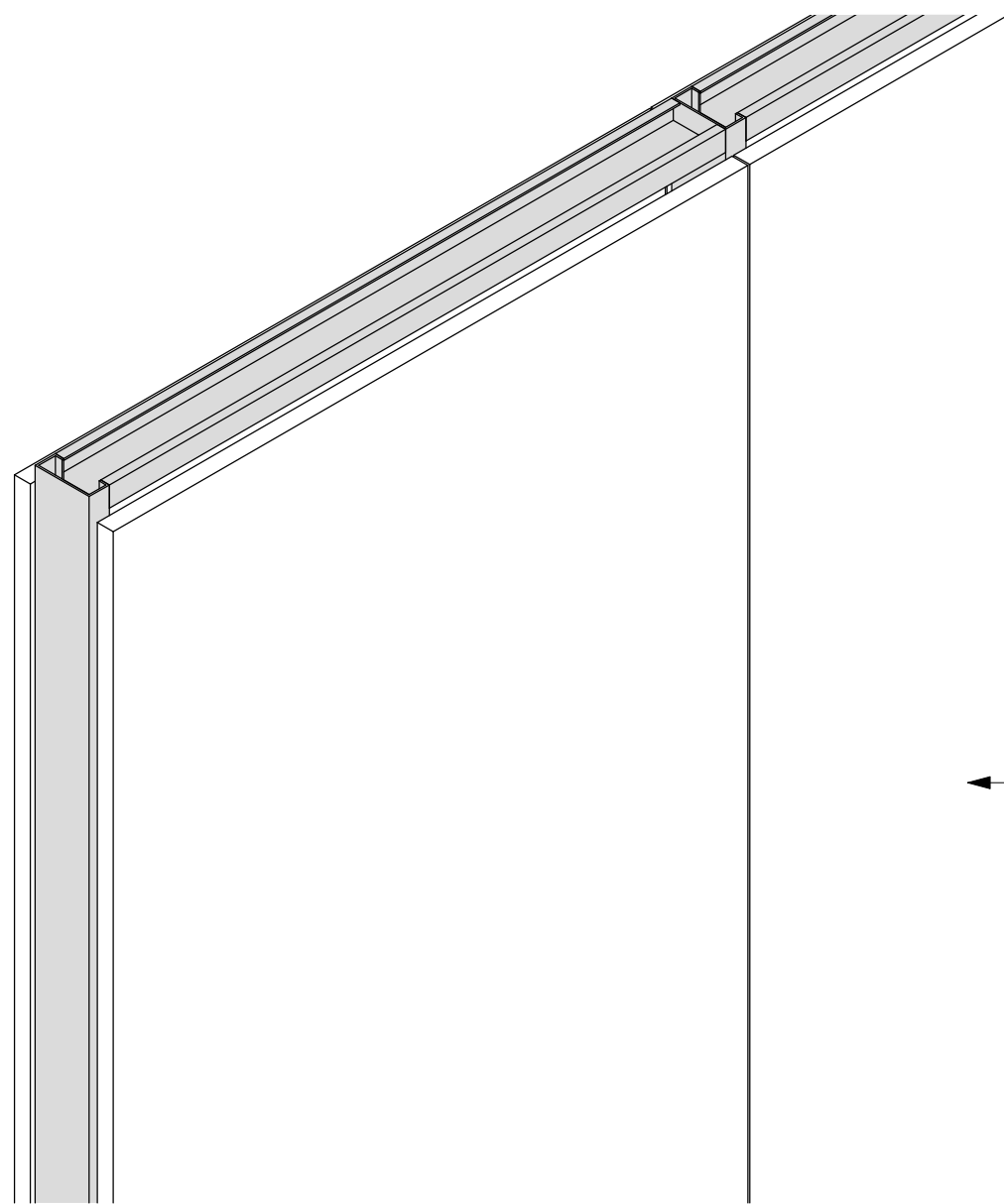


JUMBO DryWALL 51/30 (Insulated)



PW02 - JUMBO DryWALL 51/30 (Insulated) - PLAN

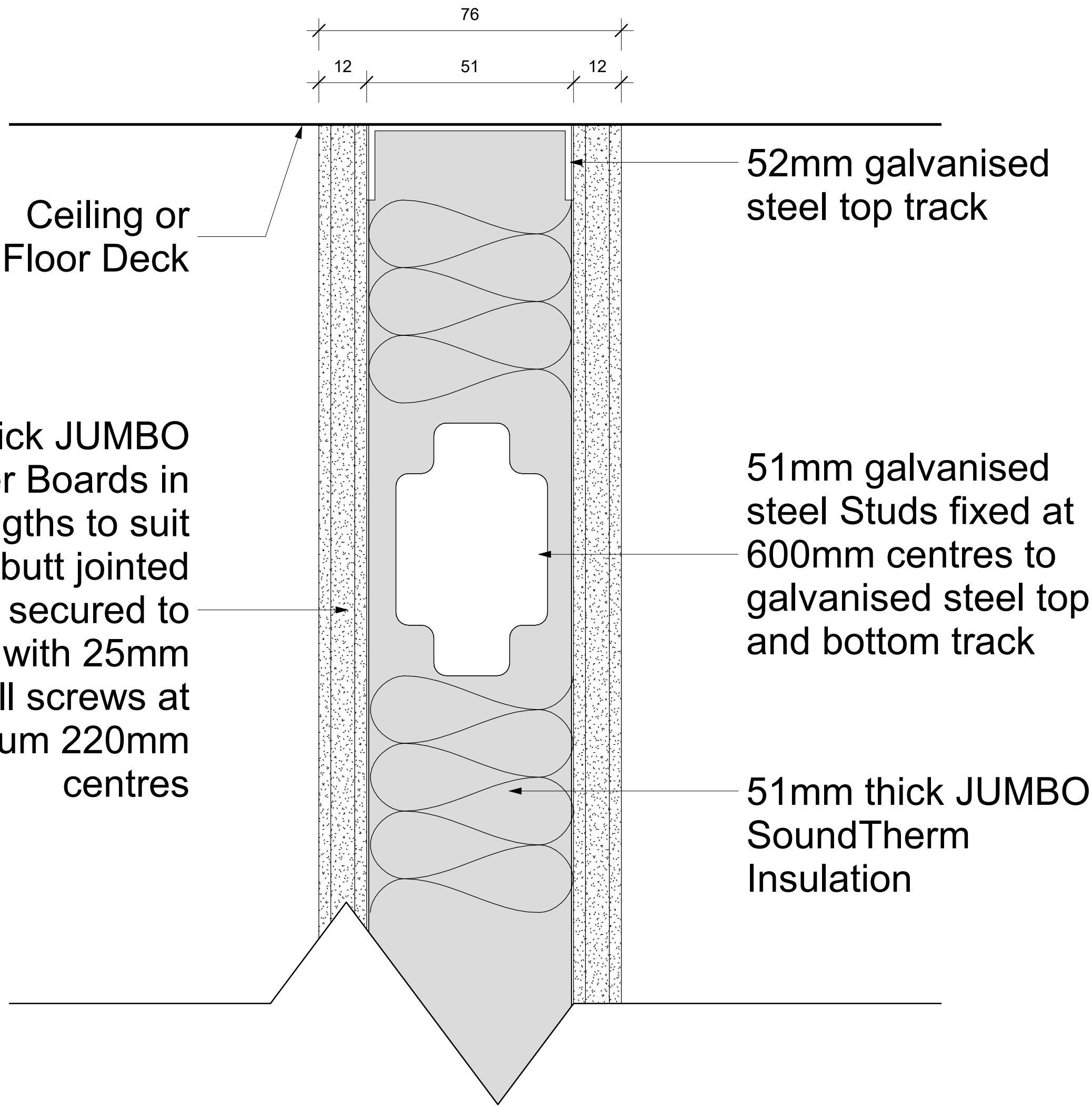
Scale 1 : 1



PW02 - JUMBO DryWALL 51/30 (Insulated) - 3D

Scale

Keynote Legend	
Key Value	Keynote Text
PW02	Pelican Systems JUMBO DryWALL 51/30 with overall thickness of 76mm comprising internal framing formed of 51mm galvanised steel Studs fixed at 600mm centres to galvanised steel top and bottom Track with 51mm thick JUMBO SoundTherm Insulation in the cavity of the of the partition, including any additional steel Studding necessary at door openings, glazed or other apertures, abutments, ends, corners, etc. and covered with 12mm thick JUMBO Plaster Boards in single lengths to suit height, butt jointed and secured to Studding with 25mm Drywall Screws at maximum 220mm centres, the joints taped over and flushed over with jointing compound prepared for painting.



PW02 - JUMBO DryWALL 51/30 (Insulated) - SECTION

Scale 1 : 1

PW02 - JUMBO DryWALL 51/30 (Insulated)	
System	Partitions
Type of Product	JUMBO DryWALL 51/30 (Insulated)
Recommended Areas	Offices / Light weight Solution / Dry Areas
Technical Spec	* 51mm Stud and Track * 51mm JUMBO SoundTherm * 12mm JUMBO Board on each side of Stud and Track
Material	0,45mm Galvanized Steel with Z100 Coating
Picture	
Overall Thickness	76 mm
Colour Options	To be painted.
Building material information	N/A
Fire Protection	30 Minute Fire Rating
Sound absorption	N/A
Sound attenuation	N/A
Sound insulation	N/A
Practical sound absorption coefficient (α <sub>p</sub> )	
Light reflectance	N/A
Thermal conductivity	N/A
Air permeability	N/A
Humidity	N/A
Green Rating	N/A
Specifications	Pelican Systems JUMBO DryWALL 51/30 with overall thickness of 76mm comprising internal framing formed of 51mm galvanised steel Studs fixed at 600mm centres to galvanised steel top and bottom Track with 51mm thick JUMBO SoundTherm Insulation in the cavity of the partition, including any additional steel Studding necessary at door openings, glazed or other apertures, abutments, ends, corners, etc. and covered with 12mm thick JUMBO Plaster Boards in single lengths to suit height, butt jointed and secured to Studding with 25mm drywall screws at maximum 220mm centres, the joints taped over and flushed over with jointing compound prepared for painting.
	The specification is based on a height restriction of up to 3 Metres high.



**pelican systems**  
ceiling and partitioning specialists...

Head Office / Durban Branch | 765 / 793 Chris Hani Road, Durban, Redhill | 031 563 7307  
Find us online at [www.pelican.co.za](http://www.pelican.co.za) or any of these social media sites

