



pelican systems

partitioning



Drywall Partitioning is a method that uses a track and stud system to divide and partition areas into smaller rooms.

JUMBO Drywall is quick to install and great for use in industrial and commercial applications. Sturdy and cost-effective, partitioning is, firstly, great for creating office spaces without the mess and fuss of renovations. Secondly, can be installed within industrial or commercial work spaces.

Drywall is a popular choice in residential applications when you combine it with a Lightweight Steel Frame building construction method.

The lightweight construction, speed of erection, low cost, fire resistance and sound ratings make this system a widely accepted drywall system in the building industry.

Choose from a range of options, including 76mm and 90mm sizes, depending on the application and requirements.



plasterboard for walls

JUMBO® 12mm Plasterboard Tapered Edge

Recommended for both residential and commercial drywall applications. 12mm JUMBO® Plasterboard is exceptionally versatile and lightweight. 12mm JUMBO® Plasterboard used in conjunction with JUMBO® SoundTherm or Galvanised Sheets can provide acoustic and secure solutions. True lines and curved radiused walls are also achievable.

Sizes	Weight / Board (kg)	Quantity / Pallet	Mass / Pallet (kg)
2400 x 1200 TE	24.20	70	1720
2700 x 1200 TE	27.20	70	1980
3000 x 1200 TE	30.20	70	2080
3600 x 1200 TE	36.30	60	2130

70 per pallet | 8.40 kg/m²

JUMBO® 12mm Fire Resistant Plasterboard Tapered Edge

Recommended for both residential and commercial drywall applications for fire protected areas. 12mm JUMBO® Fire Resistant Plasterboard is used to form smooth, straight drywalls with sharp edges and when used in conjunction with our drywall systems can provide impact and acoustic solutions.

Sizes	Weight / Board (kg)	Quantity / Pallet	Mass / Pallet (kg)
2700 x 1200 TE	29.81	70	2100
3000 x 1200 TE	30.89	70	2320
3600 x 1200 TE	37.07	60	2560

70 per pallet | 9.20 kg/m²

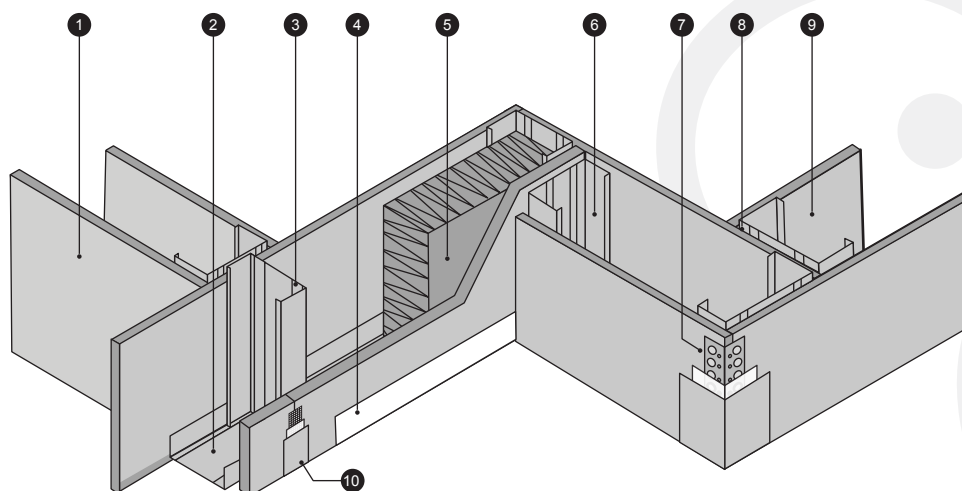
JUMBO® 15mm Fire Resistant Plasterboard Tapered Edge

Recommended for both residential and commercial drywall applications for fire protected areas. 15mm JUMBO® Fire Resistant Plasterboard is used to form smooth, straight drywalls with sharp edges and when used in conjunction with our drywall systems can provide impact and acoustic solutions.

Sizes	Weight / Board (kg)	Quantity / Pallet	Mass / Pallet (kg)
2700 x 1200 TE	32.08	50	2200
3000 x 1200 TE	35.64	50	2380

50 per pallet | 11.30 kg/m²

Typical Illustration using the JUMBO® 12mm Plasterboard for Drywalling Applications



1. JUMBO® 12mm Plasterboard
2. JUMBO® Track
3. JUMBO® Stud
4. JUMBO® Skirting
5. JUMBO® SoundTherm (Optional)
6. JUMBO® Stud
7. JUMBO® Corner Bead
8. JUMBO® Stud
9. JUMBO® 12mm Plasterboard
10. JUMBO® Tape



FireWALL 63/120/S50

Pelican Systems fire resistant JUMBO® boards are specially developed to offer superior fire resistance performance when used as cladding on drywall partitions.

Pelican Systems has expanded the JUMBO® range to include a Fire rated solution; our JUMBO® FireWALL 63/120/S50 has successfully passed the two hour fire test.

The two hour test is particularly aggressive and requires the wall to withstand fire-side temperatures in excess of 1000°C. The Pelican JUMBO® FireWALL comprising of two 15mm JUMBO Fire Resistant boards on either side of a 63mm JUMBO® Stud successfully passed the required two hour test without any insulation being used in the cavity.

Features and Benefits

- Lightweight construction
- Easy, fast and dry application
- 2 Hour fire rating achieved
- Excellent sound insulation performance - 50 Rw DB
- JUMBO® FR board contains glass fibre additives to maintain the integrity of the board for Longer time periods when exposed to fire
- Environmentally friendly
- Limitless design options

In addition to these benefits JUMBO® FireWALL 63/120/S50 is unlike competitive systems and weighs less than 48 kg/m² offering a substantial 10% saving in weight which contributes significantly to further lowering building costs and increasing load bearing capacity.

JUMBO® 15mm Fire Resistant Plasterboards

Sizes	Weight / Board	Quantity / Pallet	Mass / Pallet
2700 x 1200 TE	32.08 kg	50	2200 kg
3000 x 1200 TE	35.64 kg	50	2380 kg

Board Weight 15mm - 11.4 kg/m²

SANS FIRE TEST

JUMBO Fire Wall 63/120/S50 was tested and successfully passed SANS 10177-2, fire testing of materials, components and elements used in building Part 2:

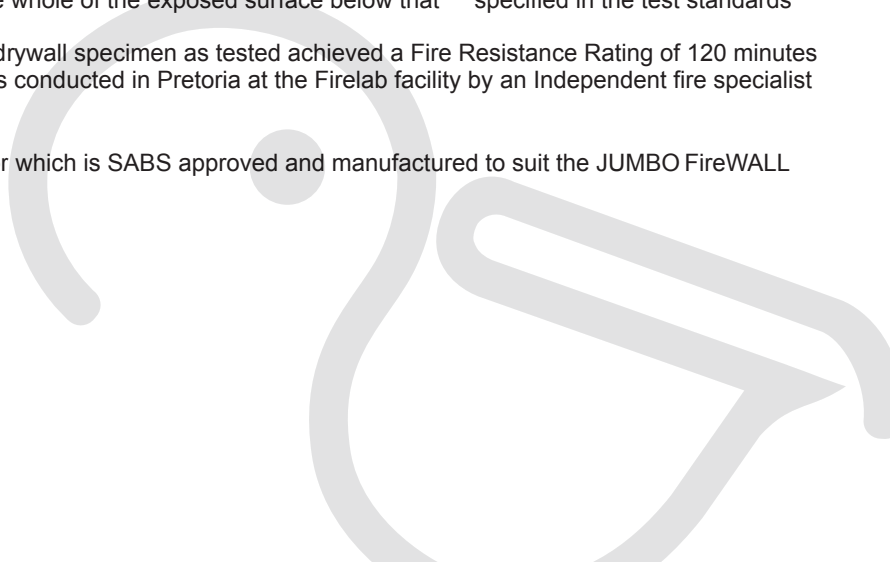
Fire resistance test for building elements.

Fire Systems are rated to withstand a fire under test conditions for a certain period of time. This is known as the fire resistance level (FRL) and consists of three main evaluation criteria:

- 1) Stability: The ability to maintain stability
- 2) Integrity: The ability to resist the passage of flames as specified
- 3) Insulation: The ability to maintain a temperature over the whole of the exposed surface below that specified in the test standards

Test report number FTC 12/101b concludes 'The Pelican drywall specimen as tested achieved a Fire Resistance Rating of 120 minutes for non-load bearing applications' The two-hour fire test was conducted in Pretoria at the Firelab facility by an Independent fire specialist and the report is available on written request.

Pelican Systems provides a Class B (2 hour) fire rated door which is SABS approved and manufactured to suit the JUMBO FireWALL 63/120/S56 system.



T1 Toilet partitions

framed partition system

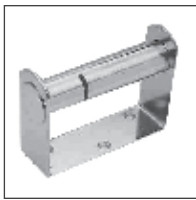
The T1 system is constructed from various substrates encased in natural anodized aluminium channels and combined with functional accessories making it an aesthetically pleasing and cost effective alternative to brick construction. The cubicles can be used in public facilities such as washrooms, ablutions and change rooms.

They are available in a wide range of panel patterns and colours which are complemented by the slim aluminium framing.

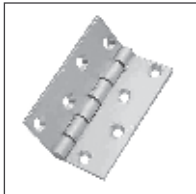
Flexible and adaptable to any toilet cubicle configuration the T1 System also caters for the requirements of the disabled making this partitioning solution the number one choice for many installations. The T1 System, although modular as standard, can be adapted to various custom configurations and requirements.

Features and Benefits:

- Economical and quick to install
- Neat and hygienic
- Aluminium framed edging and receiving channels
- Standard ironmongery
- Variety of colours and shades in Mellawood or Formica
- Functional and reliable



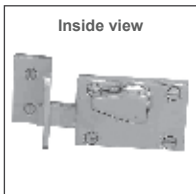
Anti-theft toilet roll holder



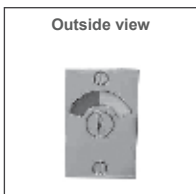
Aluminium hinge with Nylon brushes



Hat and coat hook with Rubber buffer



Inside view



Outside view

Satin chrome indicator bolt And special keep

T1 Toilet Cubicle Construction

Infil Panels:

There are two aluminium frame channels available to cater for two different finished thicknesses;

- A) Lipped Channel accommodates 16mm chipboard with either mellawood or melamine facing.
- B) Un-lipped Channel accommodates 19mm formica clad chipboard.

The formica clad chipboard is more durable of the two however it is more expensive.

Framing:

Intermediate and end partitions, doors and pilasters are neatly framed in 22 x 22mm aluminium lipped channel and mitred at corners.

Skirting:

44mm high aluminium skirtings are formed at the base of pilasters by fixing 22 x 22mm inverted channel to the floor before fixing the pilaster in position, this minimises possible water contact with the base of the pilaster.

Transom:

The system is stabilised with the 25mm square aluminium transom.

Junction at Walls:

In order to prevent gaps between uneven tiles, walls and the system, partitions and pilasters are fixed to the walls as follows:

A 26 x 24mm (22 x 22mm I.D.) full height aluminium receiving channel section is fixed vertically to the tiles or plastered brick wall.

The intermediate or end partition / pilaster – all complete with aluminium lipped channel surrounds (22 x 22mm O.D.) are then slotted into the full height receiving channel and fixed plumb.

Ironmongery to Doors:

Each door is supplied with a pair of satin finished hinges, indicator bolt and keep and hat and coat hook with rubber buffer which serves as a door stop. The pilaster frame against which the door strikes is fitted with two rubber buffers to prevent unnecessary metal on metal striking noise.

Ironmongery to Partitions:

Intermediate and end partitions are supplied with toilet roll holders.

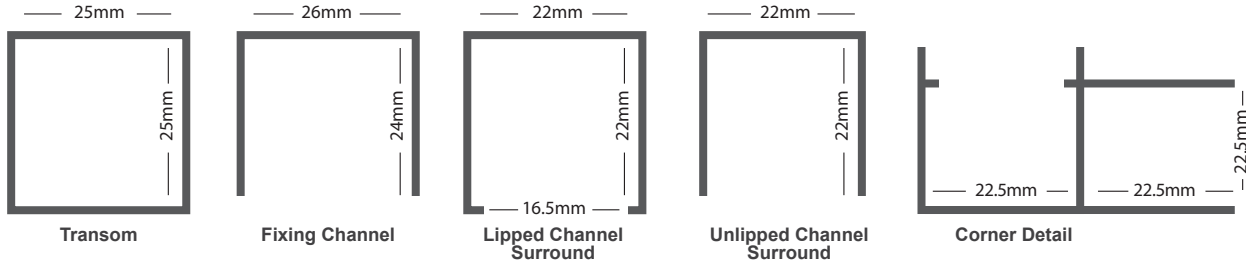
Cleaning Space:

The intermediate and end partitions are fixed 151mm above the finished floor level to allow easy cleaning.

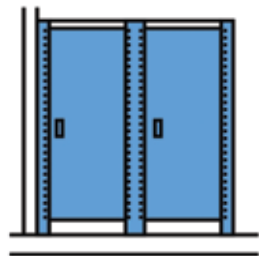
Non standard sizes can be made to measure, and door openings can be adapted for wheelchairs etc.



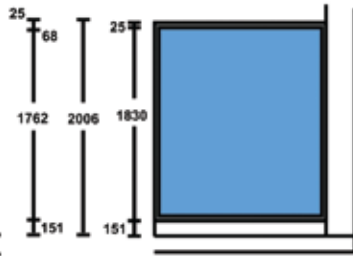
Aluminium Channels



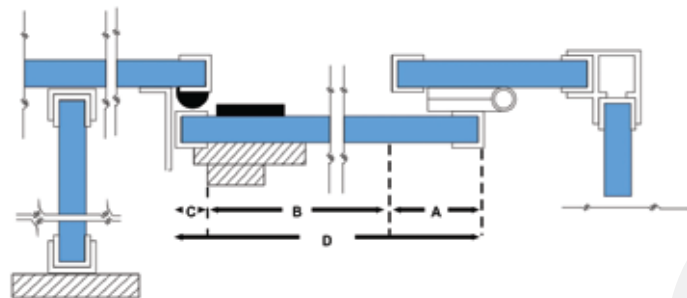
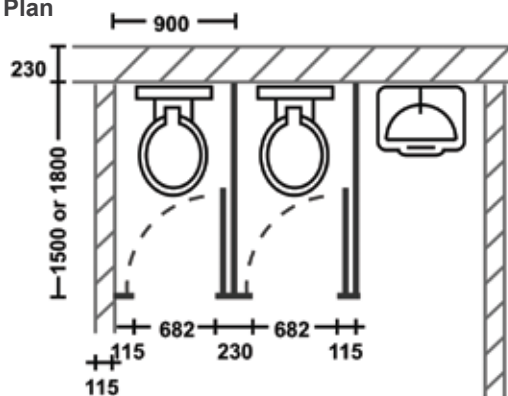
Front Elevation



End Elevation

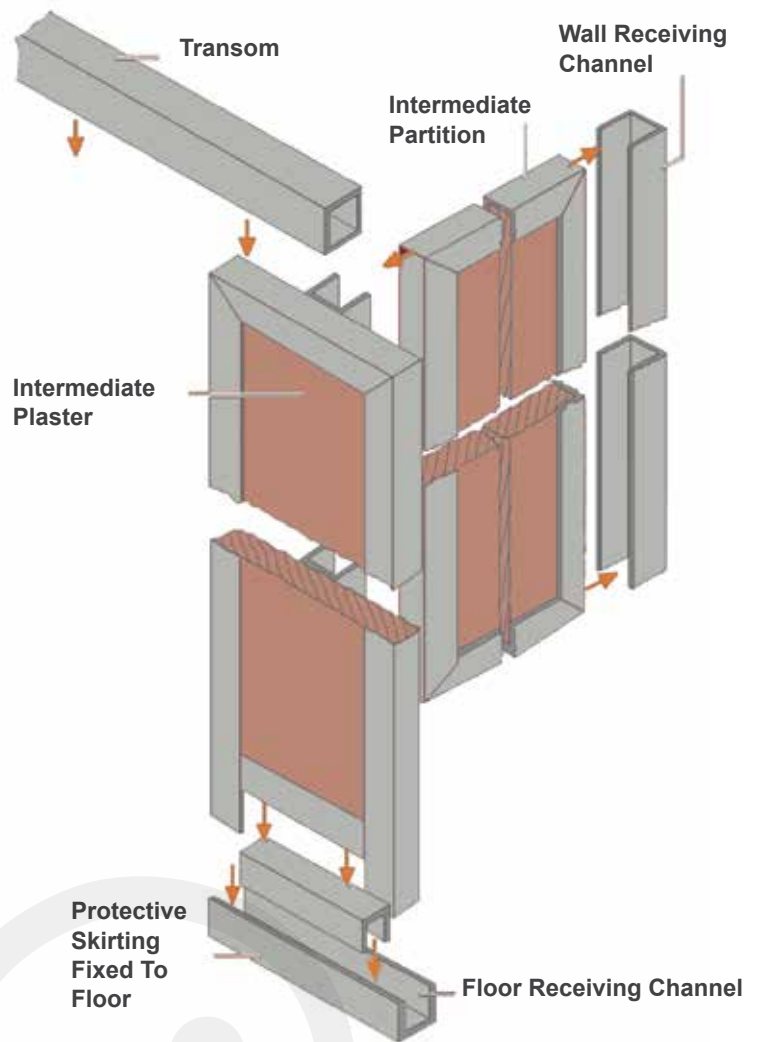


Plan



D = Door Size
 C = 22mm (Closing Overlap)
 D = B (varies) + A (58mm) + C (22mm)

A = 58mm (Hinge Overlap)
 B = Door Opening



Bill of quantity specification:

Supply and install Pelican Systems T1 Toilet Partition System comprising of 16mm thick particle board panels, laminated both sides with Melawood or Formica (specify colour), edged all round with 22 x 22mm lipped channel and fixed into position by means of full height vertical aluminium receiving channels fixed to the abutting wall, floor or pilaster. Pilasters and end partitions are stabilized by a continuous 25 x 25mm aluminium transom section over doors and supplied with a complete set of standard ironmongery comprising of indicator bolts, hat and coat hooks, door stops, toilet roll holders and rubber buffers. Aluminium surrounds, receiving channels and transom sections shall be (specify colour – natural anodised / colour anodised / colour powder coated).

*Note: Size variations are accommodated by adjusting the width of the doors



Head Office / Durban (031) 563 7307

Pietermaritzburg Branch (033) 345 3701

Northriding Branch 087 352 729 6 / 7 / 8 / 9

Centurion Branch 087 352 7268 / 6 / 8 / 9

A full list of stockists is available on the Contacts Page of our website.

Find us online at

www.pelican.co.za

or any of these social media sites

