



FireWALL 63/120

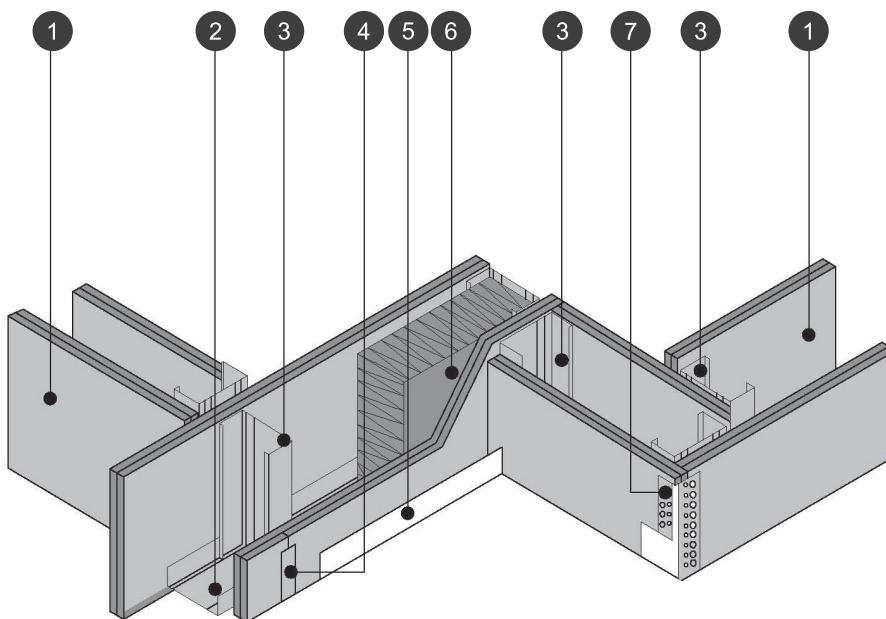
Pelican Systems JUMBO FireWall 63/120 with overall thickness of 124mm, with 63mm JUMBO Studs at 600mm centres friction fitted into head track and floor track and clad on both sides with a double layer of 15mm thick Fire Resistant JUMBO Board fixed at 200mm centres using 25mm Drywall Screws on the base layer and 41mm Drywall Screws on the face layer, all plasterboard joints to overlap. All exterior joints to be covered with JUMBO Tape and finished with two layers of JUMBO Jointing Plaster applied and lightly sanded down, leaving wall surface prepared for painting, all in accordance with the supplier's recommendations.

All installations to be done in accordance with SABISA guidelines.

Specifications are available on Autospec and our website.

Pelican Systems has an ISO 9001 Quality Management System in place and has had continuous certification since 2005.

Typical Illustration using the JUMBO® 15mm Fire Resistant Plasterboard for Drywalling Applications



1. JUMBO® 15mm FR Plasterboard
2. JUMBO® 64mm Track
3. JUMBO® 63mm Stud
4. JUMBO® Tape
5. JUMBO® Skirting
6. JUMBO® 63mm SoundTherm
7. JUMBO® Corner Bead