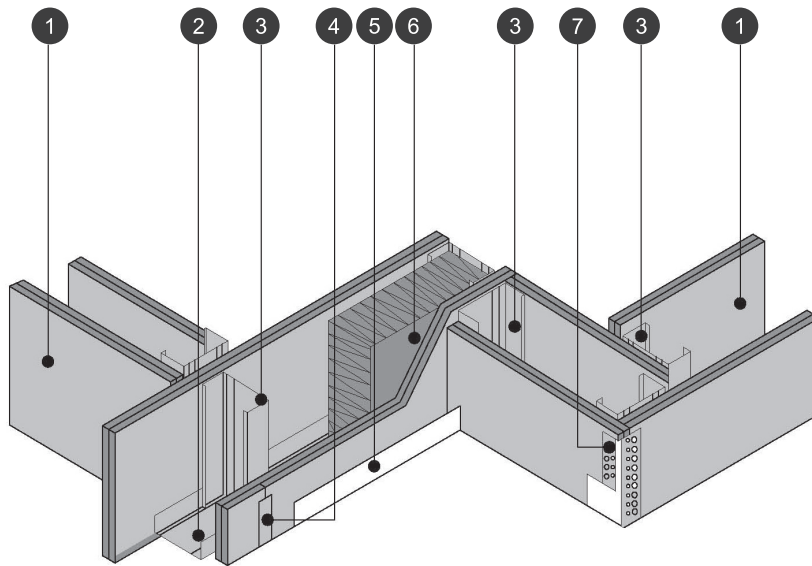




FireWALL 63/120

Pelican Systems JUMBO FireWall 63/120 with overall thickness of 124mm, with 63mm JUMBO Studs at 600mm centres friction fitted into head track and floor track and clad on both sides with a double layer of 15mm thick Fire Resistant JUMBO Board fixed at 200mm centres using 25mm Drywall Screws on the base layer and 41mm Drywall Screws on the face layer, all plasterboard joints to overlap. All exterior joints to be covered with JUMBO Tape and finished with two layers of JUMBO Jointing Plaster applied and lightly sanded down, leaving wall surface prepared for painting, all in accordance with the supplier's recommendations.

Typical Illustration for JUMBO® FireWALL 63/120



1. JUMBO® 15mm FR Plasterboard
2. JUMBO® 64mm Track
3. JUMBO® 63mm Stud
4. JUMBO® Tape
5. JUMBO® Skirting
6. JUMBO® 63mm SoundTherm (not part of test / optional)
7. JUMBO® Corner Bead

Validity and Application of the Test Report

Fire rated systems need to be assembled strictly in accordance with the relevant test reports, and approved system details and specifications. If not, the fire resistance could be compromised and the test result cannot be applied.

The following information is available on our website:-

BOQ Specification, Data Sheets, Revit Files and Detail Drawings.

Pelican Systems has an ISO 9001 Quality Management System in place and has had continuous certification since 2005.