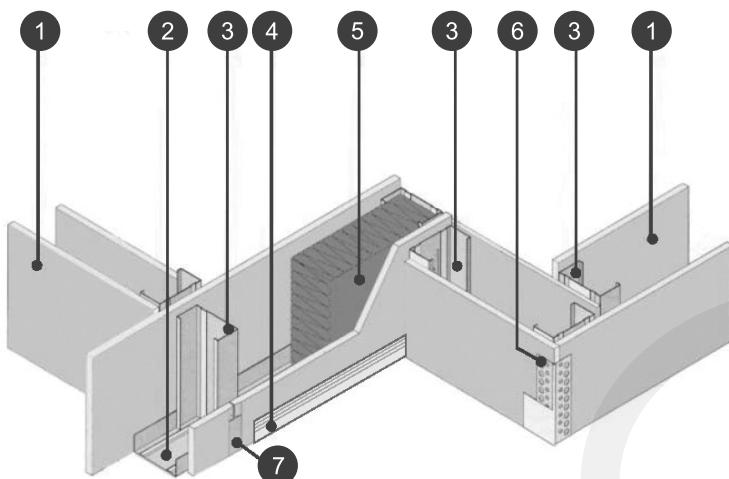


System:	Pelican Moisture Resistant 89mm Drywall
Brand:	<b>JUMBO MoistureWALL 63/30</b>
Thickness:	89mm
Fire Properties:	SANS 10177-2
Product Detail:	63mm Stud + 64mm Track + 12mm JUMBO MR Board on both side of stud and track
Recommended Areas:	Residential / Housing / Commercial
Specification:	Pelican Systems JUMBO MoistureWALL 63/30 with overall thickness of 89mm comprising internal framing formed of 63mm galvanised steel studs fixed at 600mm centres to galvanised steel top and bottom track, including any additional steel studding necessary at door openings, glazed or other apertures, abutments, ends, corners, etc and covered with 12mm thick Moisture Resistant JUMBO Boards in single lengths to suit height, butt jointed and secured to studding with 25mm Drywall Screws at maximum 220mm centres, the joints taped over and flushed over with jointing compound prepared for painting.



#### Typical Illustration using the JUMBO® 12mm Moisture Resistant Plasterboard for Drywalling Applications



1. JUMBO® 12mm MR Plasterboard
2. JUMBO® 64mm Track
3. JUMBO® 63mm Stud
4. JUMBO® Skirting
5. JUMBO® 63mm SoundTherm
6. JUMBO® Corner Bead
7. JUMBO® Tape