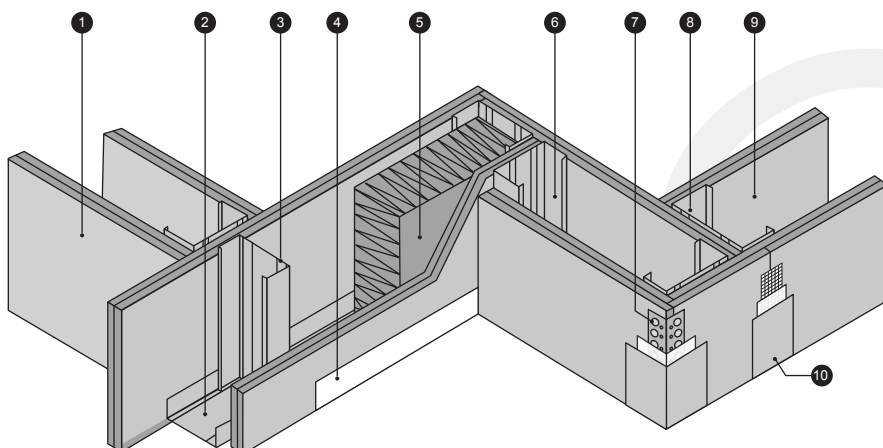




System:	Pelican 120 Minute Fire Resistant Drywall
Brand:	<b>JUMBO FireWALL 63/120</b>
Thickness:	124mm
Fire Properties:	SANS 10177-2, 120min Fire Rating
Product Detail: and track	63mm Stud + 64mm Track + 15mm (x2) JUMBO FR Board on both side of stud + 63mm JUMBO SoundTherm (optional)
Recommended Areas:	Education / Industrial / Commercial / Residential / Healthcare
Specification:	Pelican Systems JUMBO FireWall 63/120 with overall thickness of 124mm, with 63mm JUMBO Studs at 600mm centres friction fitted into head track and floor track and clad on both sides with a double layer of 15mm thick Fire Resistant JUMBO Board fixed at 200mm centres using 25mm Drywall Screws on the base layer and 41mm Drywall Screws on the face layer, all plasterboard joints to overlap. All exterior joints to be covered with JUMBO Tape and finished with two layers of JUMBO Jointing Plaster applied and lightly sanded down, leaving wall surface prepared for painting, all in accordance with the supplier's recommendations.
Acoustics & Thermal Insulation:	63mm JUMBO SoundTherm will enhance performance in a fire as well as improve acoustic and thermal performance.
Accessories:	Class B (2 Hour) Fire Rated Door in a 124mm pre-galvanised frame (LH or RH) Galvanised Steel Sheets for added security
Website Resources:	BOQ Specification, Data Sheets, Revit Files and Detail Drawings

### Typical Illustration for JUMBO® 15mm FireWALL 63/120



1. JUMBO® 15mm FR Plasterboard
2. JUMBO® 64mm Track
3. JUMBO® 63mm Stud
4. JUMBO® Skirting
5. JUMBO® 63mm SoundTherm (optional)
6. JUMBO® Stud
7. JUMBO® Corner Bead
8. JUMBO® 63mm Stud
9. JUMBO® 15mm FR Plasterboard
10. JUMBO® Tape

**NOTE: 63/120 SoundTherm (Not part of test - optional)**