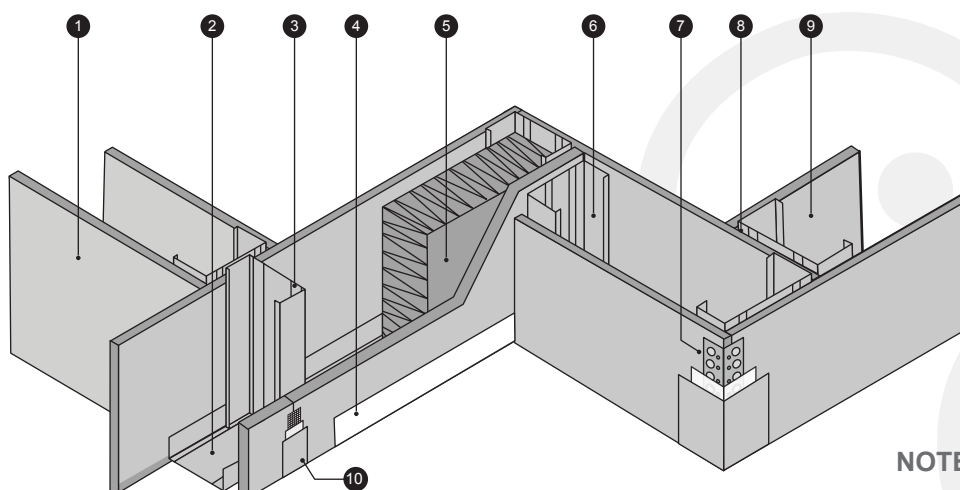




System:	Pelican Standard 76mm Drywall
Brand:	<b>JUMBO DryWALL 51/30</b>
Thickness:	76mm
Fire Properties:	SANS 10177-2, 30min Fire Rating
Product Detail:	51mm Stud + 52mm Track + 12mm JUMBO Board on each side of stud and track
Acoustic Properties:	N/A
Recommended Areas:	Commercial / Retail / Hospitality / Residential
Specification:	Pelican Systems JUMBO DryWALL 51/30 with overall thickness of 76mm comprising internal framing formed of 51mm galvanised steel studs fixed at 600mm centres to galvanised steel top and bottom track, including any additional steel studding necessary at door openings, glazed or other apertures, abutments, ends, corners, etc and covered with 12mm thick JUMBO Boards in single lengths to suit height, butt jointed and secured to studding with 25mm Drywall Screws at maximum 220mm centres, the joints taped over and flushed over with JUMBO Jointing Plaster compound prepared for painting.
Acoustics & Thermal Insulation:	51mm JUMBO SoundTherm will enhance performance in a fire as well as improve acoustic and thermal performance.
Accessories:	76mm Prefab Doorframe / Kit (LH or RH) 76mm Pelican Drywall Aluminium Trims
Website Resources:	BOQ Specification, Data Sheets, Revit Files and Detail Drawings

#### Typical Illustration using the JUMBO® 12mm Plasterboard for Drywalling Applications



1. JUMBO® 12mm Plasterboard
2. JUMBO® 52mm Track
3. JUMBO® 51mm Stud
4. JUMBO® Skirting
5. JUMBO® 51mm SoundTherm
6. JUMBO® 51mm Stud
7. JUMBO® Corner Bead
8. JUMBO® Stud
9. JUMBO® 12mm Plasterboard
10. JUMBO® Tape

**NOTE: 51/30 (SoundTherm optional)**