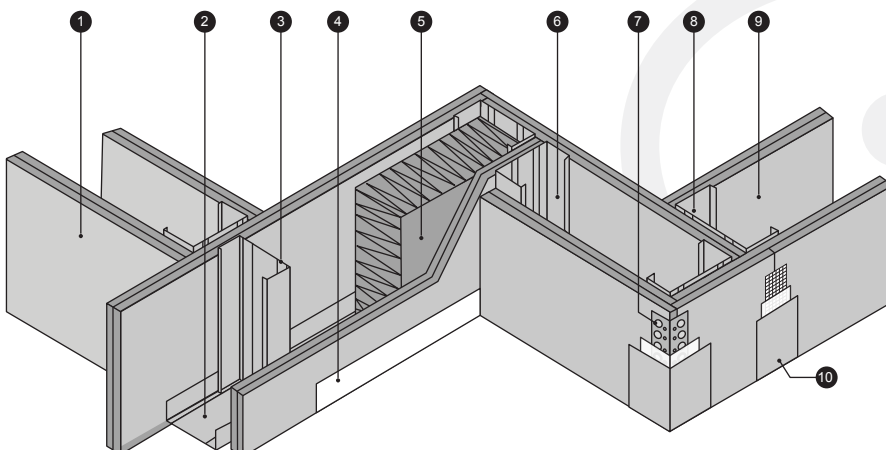


System:	Pelican Acoustic 124mm Drywall
Brand:	JUMBO AcousticWALL 63/120/S50
Thickness:	124mm
Fire Properties:	SANS 10177-2, 120min Fire Rating
Product Detail:	63mm Stud + 64mm Track + 15mm (x2) JUMBO FR Board on both side of stud and track + 63mm JUMBO SoundTherm
Acoustic Properties:	50dB
Recommended Areas:	Commercial / Retail / Hospitality / Education / Healthcare
Specification:	Pelican Systems JUMBO AcousticWALL 63/120/S50 with overall thickness of 124mm, with 63mm JUMBO studs at 600mm centres friction fitted into head track and floor track with 63mm thick JUMBO SoundTherm in cavity of partition, and clad on both sides with a double layer of 15mm thick Fire Resistant JUMBO Plasterboard fixed at 220mm centres using 25mm Drywall Screws on the base layer and 41mm Drywall Screws on the face layer, all plasterboard joints to overlap. All exterior joints to be covered with JUMBO Fibre Tape and finished with two layers of JUMBO Jointing Plaster applied and lightly sanded down, leaving wall surface prepared for painting, all in accordance with the supplier's recommendations.
Acoustics & Thermal Insulation:	63mm JUMBO SoundTherm will enhance performance in a fire as well as improve acoustic and thermal performance.
Accessories:	Class B (2 Hour) Fire Rated Door in a 124mm pre-galvanised frame (LH or RH) Galvanised Steel Sheets for added security
Website Resources:	BOQ Specification, Data Sheets, Revit Files and Detail Drawings

Typical Illustration using the JUMBO® 15mm Plasterboard for Drywalling Applications



1. JUMBO® 15mm FR Plasterboard
2. JUMBO® 64mm Track
3. JUMBO® 63mm Stud
4. JUMBO® Skirting
5. JUMBO® 63mm SoundTherm
6. JUMBO® Stud
7. JUMBO® Corner Bead
8. JUMBO® 63mm Stud
9. JUMBO® 15mm FR Plasterboard
10. JUMBO® Tape