

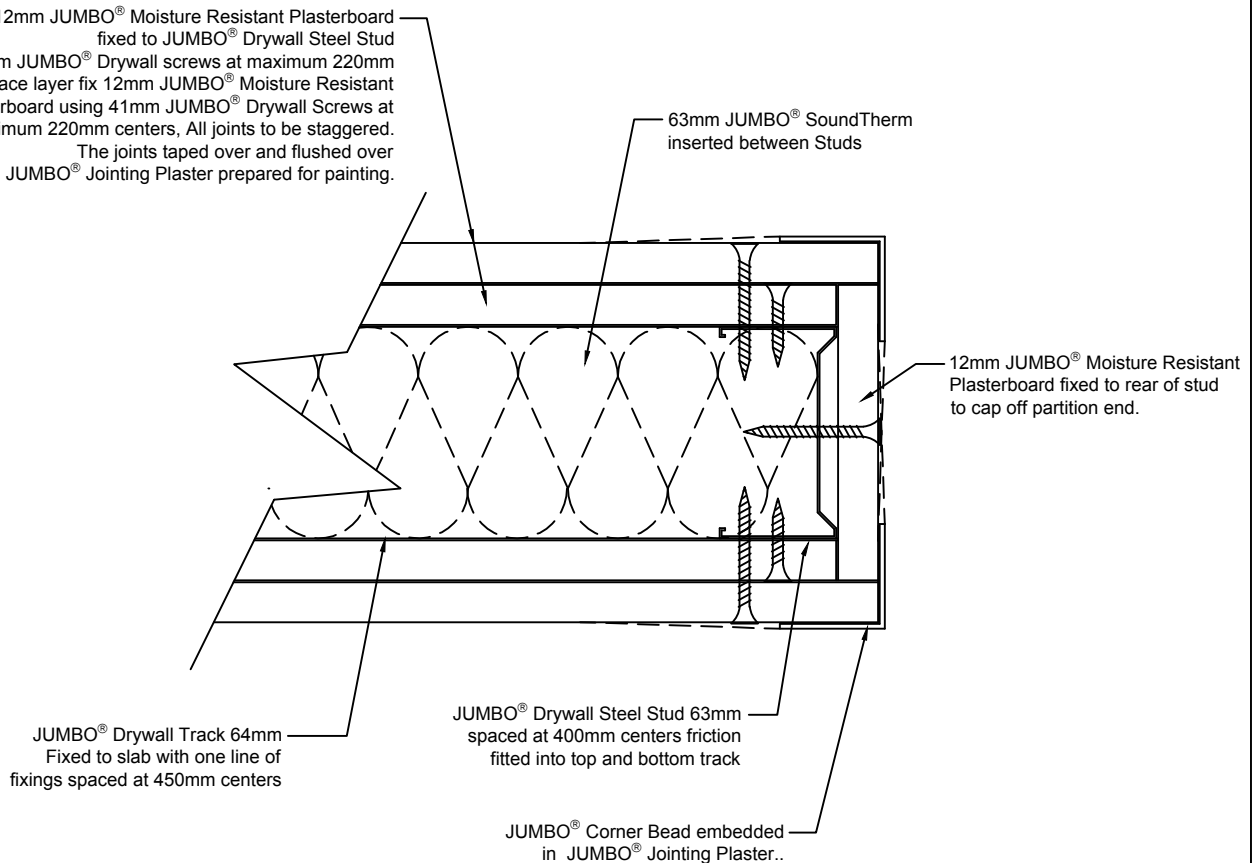


DRAWING DETAIL

partitioning systems

**JUMBO MoistureWALL 63/112
CAPPING END CONNECTION DETAIL**

2 layers of 12mm JUMBO® Moisture Resistant Plasterboard fixed to JUMBO® Drywall Steel Stud using 25mm JUMBO® Drywall screws at maximum 220mm centers, For face layer fix 12mm JUMBO® Moisture Resistant Plasterboard using 41mm JUMBO® Drywall Screws at maximum 220mm centers, All joints to be staggered. The joints taped over and flushed over with JUMBO® Jointing Plaster prepared for painting.



Details to be used for information purposes only.

DRAWING NO.

Capping end connection detail - REV 1

NOTES:

To be read in conjunction with the project specifications