

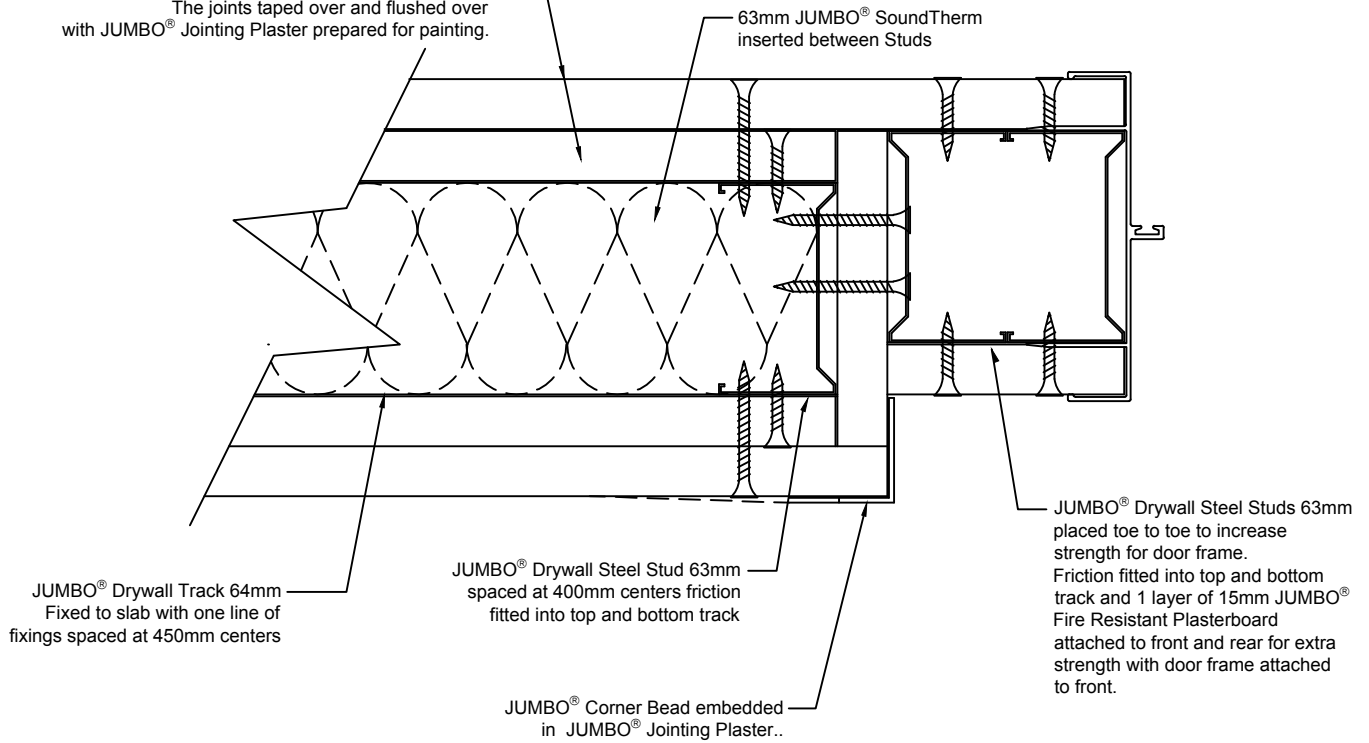


DRAWING DETAIL

partitioning systems

**JUMBO AcousticWALL 63/120/S56
SHOP FRONT CONNECTION DETAIL**

2 layers of 15mm JUMBO® Fire Resistant Plasterboard fixed to JUMBO® Drywall Steel Stud using 25mm JUMBO® drywall screws at maximum 220mm centers, For face layer fix 15mm JUMBO® Fire Resistant Plasterboard using 41mm JUMBO® Drywall Screws at maximum 220mm centers, All joints to be staggered. The joints taped over and flushed over with JUMBO® Jointing Plaster prepared for painting.



Details to be used for information purposes only.

DRAWING NO.

Shop front connection detail - REV 1

NOTES:

To be read in conjunction with the project specifications