



FireWALL 63/120/S56



ceiling systems

partitioning systems

opening systems

flooring systems



Head Office / Durban
(031) 563 7307
Pietermaritzburg Branch
(033) 345 3701

For export and all other regions
contact our head office or
one of our distributors.

Distributors:

Zululand
Above All Ceiling & Partitioning Systems
(035) 751 1956
Northern KZN
SAIBA Industries (Pty)
(034) 375 6051/2
South Coast
Southgate Ceilings & Partitions
(039) 314 9021
East London & Border Area
Almex East London
(043) 736 6334
Port Elizabeth
Amalgamated
(041) 451 2846
Krugersdorp
Ceiling Dynamix
(011) 660 6584
Northriding, Johannesburg
C+T Ceilings & Partitions Warehouse
(011) 704 6224
Centurion, Pretoria
C+T Ceilings & Partitions warehouse
(012) 653 3531
Alrode, Johannesburg
Supertec Ceilings & Board
(011) 868 4901
Troyville, Johannesburg
Supertec Ceilings & Board
(087) 943 4040
Wynberg, Johannesburg
Supertec Ceilings & Board
(011) 440 3712
Hamilton, Bloemfontein
Smart Boards (Pty) Ltd
(051) 430 8123

Visit our website on www.pelican.co.za
Email info@pelican.co.za



creating environments



Pelican Systems fire resistant JUMBO® boards are specially developed to offer superior fire resistance performance when used as cladding on drywall partitions.

Pelican Systems has expanded the JUMBO® range to include a Fire rated solution; our JUMBO® FireWALL 63/120/S56 has successfully passed the two hour fire test.

The two hour test is particularly aggressive and requires the wall to withstand fire-side temperatures in excess of 1000°C. The Pelican JUMBO® FireWALL comprising of two 15mm JUMBO® Fire Resistant boards on either side of a 63mm JUMBO® Stud successfully passed the required two hour test without any insulation being used in the cavity.

Features and Benefits

- Lightweight construction
- Easy, fast and dry application
- 2 Hour fire rating achieved
- Excellent sound insulation performance - 56 Rw DB
- JUMBO® FR board contains glass fibre additives to maintain the integrity of the board for longer time periods when exposed to fire
- Environmentally friendly
- Limitless design options

In addition to these benefits JUMBO® FireWALL 63/120/S56

is unlike competitive systems and weighs less than 48 kg/m² offering a substantial 10% saving in weight which contributes significantly to further lowering building costs and increasing load bearing capacity.

JUMBO® 15mm Fire Resistant Plasterboards

Sizes	Weight / Board (kg)	Quantity / Pallet	Mass / Pallet (kg)
2700 x 1200 SE	36.94	50	2236
3000 x 1200 SE	41.04	50	2445

Board Weight 15mm - 11.4 kg/m²

SANS FIRE TEST

JUMBO® Fire Wall 63/120/S56 was tested and successfully passed SANS 10177-2, fire testing of materials, components and elements used in building Part 2:

Fire resistance test for building elements.

Fire Systems are rated to withstand a fire under test conditions for a certain period of time. This is known as the fire resistance level (FRL) and consists of three main evaluation criteria:

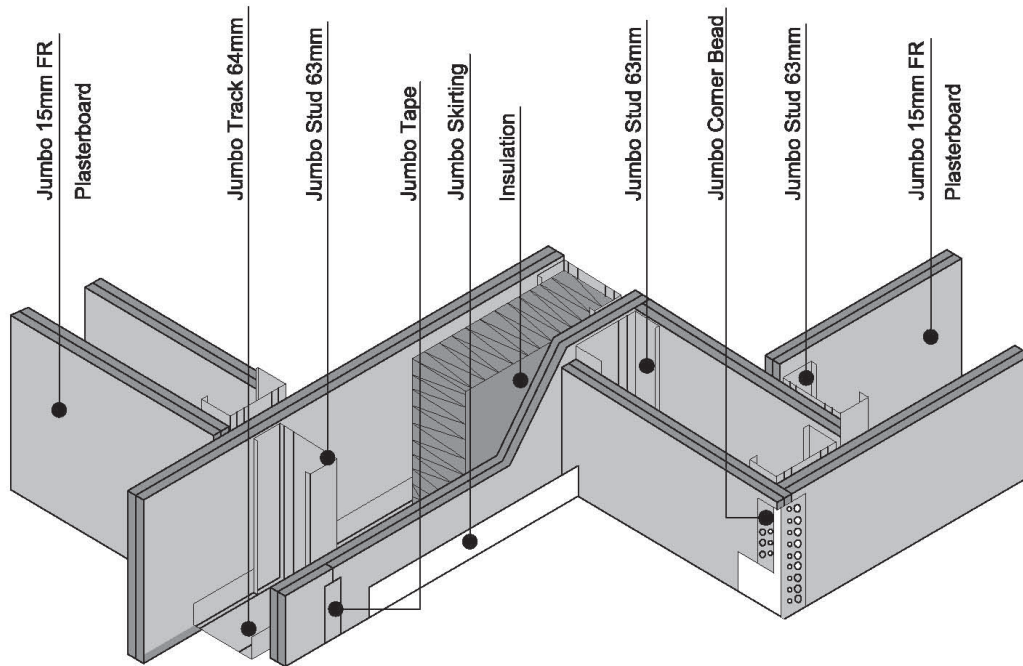
- 1) Stability: The ability to maintain stability
- 2) Integrity: The ability to resist the passage of flames as specified
- 3) Insulation: The ability to maintain a temperature over the whole of the exposed surface below that specified in the test standards

Test report number FTC 12/101b concludes 'The Pelican drywall specimen as tested achieved a Fire Resistance Rating of 120 minutes for non-load bearing applications' The two-hour fire test was conducted in Pretoria at the Firelab facility by an Independent fire specialist and the report is available on written request.

Pelican Systems provides a Class B (2 hour) fire rated door which is SABS approved and manufactured to suit the JUMBO® FireWALL 63/120/S56 system.

Typical Illustration using JUMBO® FireWALL 63/120/S56 for Drywalling Applications

* **NOTE:** The 14 kg/m³ insulation is optional and not necessary for the 120min fire rating



IDEAL FOR USE IN

Healthcare, Education, Commercial, Residential & Hospitality

Accessories

Class B (120min) SABS approved Pyropanel Fire Door
Sound & Heat Insulation Products - for added sound & heat insulation
Galvanized Steel Sheets - for added security
JUMBO® Corner Beads

Bill of quantity specification:

Pelican Systems JUMBO® FireWall 63/120/S56 (120 minutes fire rating) with overall thickness of 124mm, consisting of JUMBO® stud and track system with 63 x 35mm JUMBO® studs at 600mm centres friction fitted into head track and floor track and clad on both sides with a double layer of 15mm thick Fire Resistant JUMBO® Plasterboard fixed at 200mm centres using 25mm JUMBO® Screws on the base layer and 42mm JUMBO® Screws on the face layer, all plasterboard joints must overlap, all exterior joints to be covered with JUMBO® Tape and finished with two layers of JUMBO® Jointing Plaster applied and lightly sanded down, leaving wall surface prepared for painting, all in accordance with the supplier's recommendations. 14kg/m³ density insulation to be installed in the cavity.

Find this spec on Autospec and CCN

* **Note:** Fire resistant JUMBO® boards are just part of a complete fire rated assembly. To achieve a certain fire rating on a JUMBO® FireWALL 63/120/S56 drywall assembly, the complete system from Pelican Systems needs to be used and the assembly needs to be installed according to Pelican Systems installation guidelines.



Pelican Systems is an ISO 9001:2008 certified company
(certified from 2005)

