

KRONOTEX

FLOORS FOR LIVING



COLLECTION 2014

KRONOTEX

FLOORS FOR LIVING

A floor is the foundation for every type of room design, and hence the basis for creating one's own sense of what life should be all about. For this purpose, Kronotex opens up a completely new world for you. Experience laminate floors which meet all demands, which feature unique aesthetics and top-class quality. There is no limit to where your imagination can carry you!

Structures and surfaces	4	
Characteristics	5	
Product overview	6	
MAMMUT	AC5 / 12mm	6
AMAZONE	AC5 / 10mm	8
GLAMOUR	AC4 / 8mm	14
EXQUISIT	AC4 / 8mm	18
DYNAMIC	AC4 / 8mm	22
SMART	AC3 / 7mm	26
Online Floor Studio		31
Our Environmental Product Declaration		35
Technical information		36

Structures



PR (wood pore): typical wood structure



MO (matt oiled): matt oiled surface appearance



WG (wood grain): rustic embossing



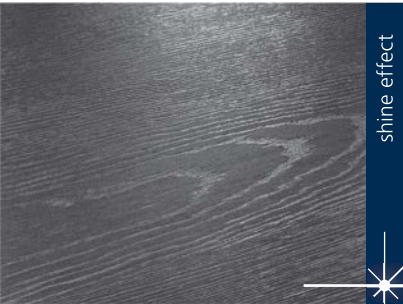
MX (matrix): deep structure embossing with typical wood matt/gloss contrast



BS: soft structure



ER (registered emboss): genuine wood appearance due to consistence between pattern and embossing



CP (chrome pore): wood structure with shine effect

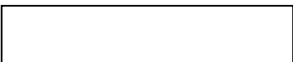


ST (stone): distinctive stone

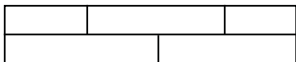


HG (high gloss): high gloss surface hardened with electron beam

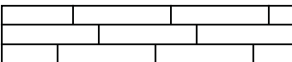
Surfaces



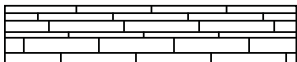
1 - Strip



2 - Strip



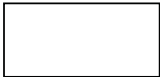
3 - Strip



Multi-strip



Natural stone format XL



Natural stone format

Characteristics



Kronotex floors are low-maintenance and hard-wearing



Kronotex floors are flame resistant.



Kronotex floors are largely resistant to cigarette burns.



Kronotex floors are non-fading and retain their brilliance over many years.



Kronotex floors are rugged, load and impact-resistant.



Kronotex floors are abrasion-resistant.



Kronotex floors are produced from natural sustainable raw materials.



Kronotex floors are comfortable underfoot.



Kronotex floors are well suited for installation over subfloor heating.



Kronotex floors are stain-resistant.

Individual features



These panels feature a 45° sloped edge. When they are joined together, a V-groove forms, producing a natural solid wood character.



V2 - on the long side
V4 - all the way round



"Endless Elegance" - joints as seamless as one piece



antistatic



High gloss surface



suitable for damp rooms

Kronotex product overview

MAMMUT



COMMERCIAL 33

AC 5

PANEL 1845 x 188 x 12mm
BOX 4 panels / 1.387 m²
PALLET 56 boxes / 77.697 m²



AMAZONE



COMMERCIAL 33

AC 5

PANEL 1380 x 157 x 10 mm
BOX 6 panels / 1.30 m²
PALLET 40 boxes / 52.00 m²



GLAMOUR

ABRASION CLASS

AC 4

PANEL 1380 x 193 x 8mm
BOX 8 panels / 2.131 m²
PALLET 56 boxes / 119.32 m²

***PANEL** 1380 x 244 x 8mm
BOX 8 panels / 2.694 m²
PALLET 42 boxes / 113.138 m²



EXQUISIT



COMMERCIAL 32

AC 4

PANEL 1380 x 193 x 8mm
BOX 8 panels / 2.131 m²
PALLET 56 boxes / 119.32 m²

***PANEL** 1380 x 244 x 8mm
BOX 8 panels / 2.694 m²
PALLET 42 boxes / 113.138 m²



DYNAMIC



COMMERCIAL 32

AC 4

PANEL 1380 x 193 x 8mm
BOX 8 panels / 2.131 m²
PALLET 56 boxes / 119.32 m²



SMART



COMMERCIAL 23

AC 3

PANEL 1376 x 193 x 7mm
BOX 9 panels / 2.390 m²
PALLET 56 boxes / 133.84 m²





MAMMUT

www.kronotex.co.za



KRONOTEX
FLOORS FOR LIVING

EVEREST OAK



KRONOTEX
FLOORS FOR LIVING

CAPITAL OAK



LIMED OAK
1 - STRIP / ER / V4

209035
D2413



CAPITAL OAK
1 - STRIP CP / V4

209037
D2994



CAPITAL OAK LIGHT
1-STRIP / CP / V4

209038
D 2800



CAPITAL OAK NATURE
1 - STRIP / CP / V4

209039
D2999



EVEREST OAK BRONZE
1 - STRIP / ER / V4

209036
D3077



EVEREST OAK
1 - STRIP / ER / V4

210024
D3076

For many, the best is just about good enough. And if you are always striving towards perfection as well, then there is only one floor for you: **MAMMUT** from Kronotex. It combines the best features of **DYNAMIC** and **EXQUISIT**, and is thus the absolute Nonplus-Ultra of laminate floors. Whether used universally, for extremely heavy loads or to create a sophisticated and natural look, MAMMUT is a floor which can meet all the requirements. The panels are extra hard, extra long and, what's more, extra practical. An outstanding feature of the patterns and hues is their country cottage character and the fascinating, authentic natural wood look.

MAMMUT

USE CLASS 33 / AC 5

PANEL 1845 x 188 x 12 mm

BOX 4 panels / 1.387 m²

PALLET 56 boxes / 77.697 m²





AMAZONE

www.kronotex.co.za



KRONOTEX
FLOORS FOR LIVING

SIBIRIAN SPRUCE



KRONOTEX
FLOORS FOR LIVING

PRESTIGE OAK NATURE



SIBIRIAN SPRUCE
1 - STRIP / MX / V4

209052
D2967



PRESTIGE OAK NATURE
1 - STRIP / ER / V4

209054
D4166



CAMBRIDGE OAK
1 - STRIP / ER / V4

209051
D2461

Be graceful. Prove style. With **AMAZONE**, the floor for everyone who appreciates the exclusive and the extraordinary. It combines conventional beauty with individual fashioning opportunities, and thus lends that special something to every setting. **AMAZONE** floorings are narrow and long, which creates a particularly graceful look. This also helps create the most fascinating of patterns. Whether you are aiming at a systematic, individual or absolutely noble look, this floor can be fashioned to meet all your ideas with its sophisticated patterns and hues.

AMAZONE

USE CLASS 33 / AC 5

PANEL 1380 x 157 x 10 mm

BOX 6 panels / 1.30 m²

PALLET 40 boxes / 52.00 m²





GLAMOUR

www.kronotex.co.za



KRONOTEX
FLOORS FOR LIVING

CANYON MORADILLO



KRONOTEX
FLOORS FOR LIVING

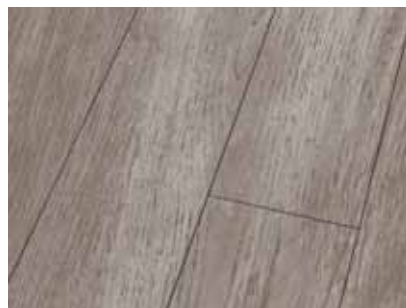
CANYON PLUM



CANYON PLUM 209937
1 - STRIP / HG / V4 D2919



CANYON MORADILLO 209049
1 - STRIP / HG / V4 D2918



WHITE OAK 210025
1 - STRIP / HG / V4 D4187



SONOMA OAK 210026
1 - STRIP / HG / V4 D4186



ARAGON OAK 202228
1 - STRIP / HG / V4 D4181



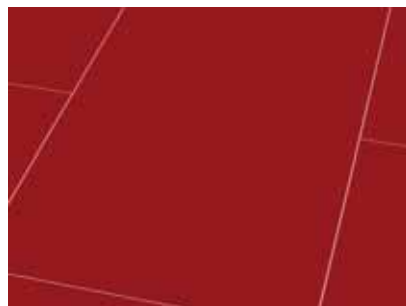
***UNI WHITE** 205059
NATURAL STONE FORMAT / HG / V4



***UNI GREY** 205060
NATURAL STONE FORMAT / HG / V4



***UNI BLACK** 205061
NATURAL STONE FORMAT / HG / V4



***UNI RED**
NATURAL STONE FORMAT / HG / V4

A floor unlike any you have ever seen before – one which only Kronotex can create with such luxury and fascination.
A highly-elegant look, a compelling effect, a sophisticated design.

GLAMOUR cannot fail to impress with its sophisticated, highly exclusive look as well as with its typical Kronotex usage properties. But this is only to be expected! This floor has been coated with several layers of extremely hard wearing lacquer and designed for a wide variety of uses. And it offers all the guarantees for demanding usage with a high level of comfort and universal safety.

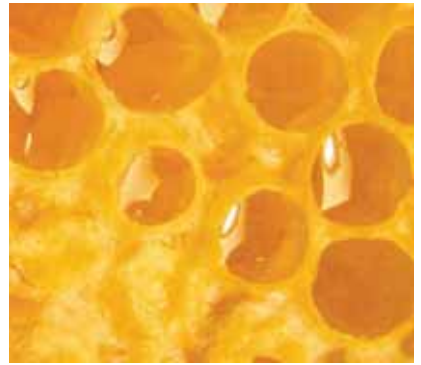
GLAMOUR



ABRASION CLASS AC 4

PANEL 1380 x 193 x 8 mm
BOX 8 panels / 2.131 m²
PALLET 32 boxes / 68.183 m²

***PANEL** 644 x 310 x 8 mm
BOX 10 panels / 1.996 m²
PALLET 42 boxes / 83.849 m²



EXQUISIT

www.kronotex.co.za



KRONOTEX
FLOORS FOR LIVING

WHITEWASHED OAK



KRONOTEX
FLOORS FOR LIVING

MAJOR OAK WHITE



HACIENDA OAK BEIGE

1 - STRIP / PR / V4

209938

D2957



HERITAGE PEKAN

1 - STRIP / WG / V4

209029

D406



NATURAL PINE

1 - STRIP / MX / V2

209030

D2774



BOUGH PINE

1 - STRIP / MX / V4

210090

D4163



ROUTE DES VINS CLAIR

1 - STRIP / WG / V4

209040

D2949



ROUTE DES VINS FONCÉ

1 - STRIP / WG / V4

209041

D2905



WHITEWASHED OAK

1 - STRIP / MX / V4

209031

D2987



STIRLING OAK MEDIUM

1 - STRIP / CP / V4

210052

D2805



VERANDA

1 - STRIP / WG / V4

209913

D2940



***RIFT OAK**

1 - STRIP / MX / V4

209071

D3044



***MAJOR OAK WHITE**

1 - STRIP / CP / V2

209033

D3011

EXQUISIT

EXQUISIT is a floor which is noble and natural as wood. It is perfection itself, radiates warmth and comfort and is as pleasant to walk upon as solid wood. Its synchronised, embossed grain and the matt surface shimmer give it an authentic structure and create a warm, natural atmosphere. And the carefully milled V-groove also contributes to the typical, representative floorboard look.

USE CLASS 32 / AC 4

PANEL 1380 x 193 x 8 mm

BOX 8 panels / 2.131 m²

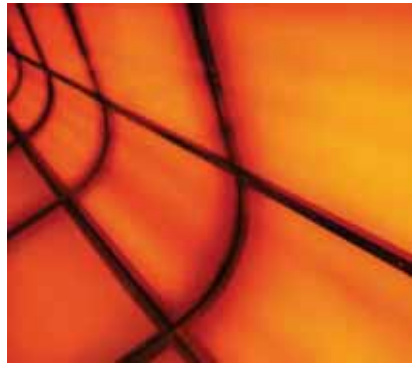
PALLET 56 boxes / 119.32 m²

***PANEL** 1380 x 244 x 8 mm

BOX 8 panels / 2.694 m²

PALLET 42 boxes / 113.138 m²





DYNAMIC

www.kronotex.co.za



KRONOTEX
FLOORS FOR LIVING

WHITE OAK



KRONOTEX
FLOORS FOR LIVING

TREND OAK NATURE



TREND OAK GREY
2 - STRIP / WG

208898
D3126



TREND OAK NATURE
2 - STRIP / WG

208899
D3125



CENTURY OAK BROWN
2 - STRIP / WG

209072
D4177



WHITE OAK
2 - STRIP / WG

209028
D2951

DYNAMIC! A floor with which you can express your entire individuality. It can be used anywhere, is extremely resilient and, above all else, offers a unique variety of patterns and hues. All this makes **DYNAMIC** the perfect floor for your ideas. Develop your full potential and live your life as you want to live it. And if you want, your **DYNAMIC** floor can move around with you. It can be easily removed and re-installed somewhere else even in medium used commercial areas.

DYNAMIC

USE CLASS 32 / AC 4

PANEL 1380 x 193 x 8 mm

BOX 8 panels / 2.131 m²

PALLET 56 boxes / 119.32 m²





SMART

www.kronotex.co.za



KRONOTEX
FLOORS FOR LIVING

CENTURY OAK BROWN



KRONOTEX
FLOORS FOR LIVING

CENTURY OAK GREY



CENTURY OAK BROWN

1 - STRIP / WG

210035

D4177



CENTURY OAK GREY

1 - STRIP / WG

210034

D4175



TREND OAK BROWN

1 - STRIP / WG

210033

D3128



TREND OAK WHITE

1 - STRIP / WG

210036

D3201

Don't even think of letting the small things hold you back. Instead, show what you're made of. It is clear statements that count, so grab the bull by the horns. With **SMART**, the floor for quick, budget-friendly installation in spacious areas, this Kronotex range shows abundance of feeling and versatility. Tractional, highly-aesthetic patterns and hues and fascinating design ideas. **SMART** is the well-shaped floor for every occasion.

SMART

USE CLASS 23/ AC3

PANEL 1376 x 193 x 7mm

BOX 9 panels / 2.390m²

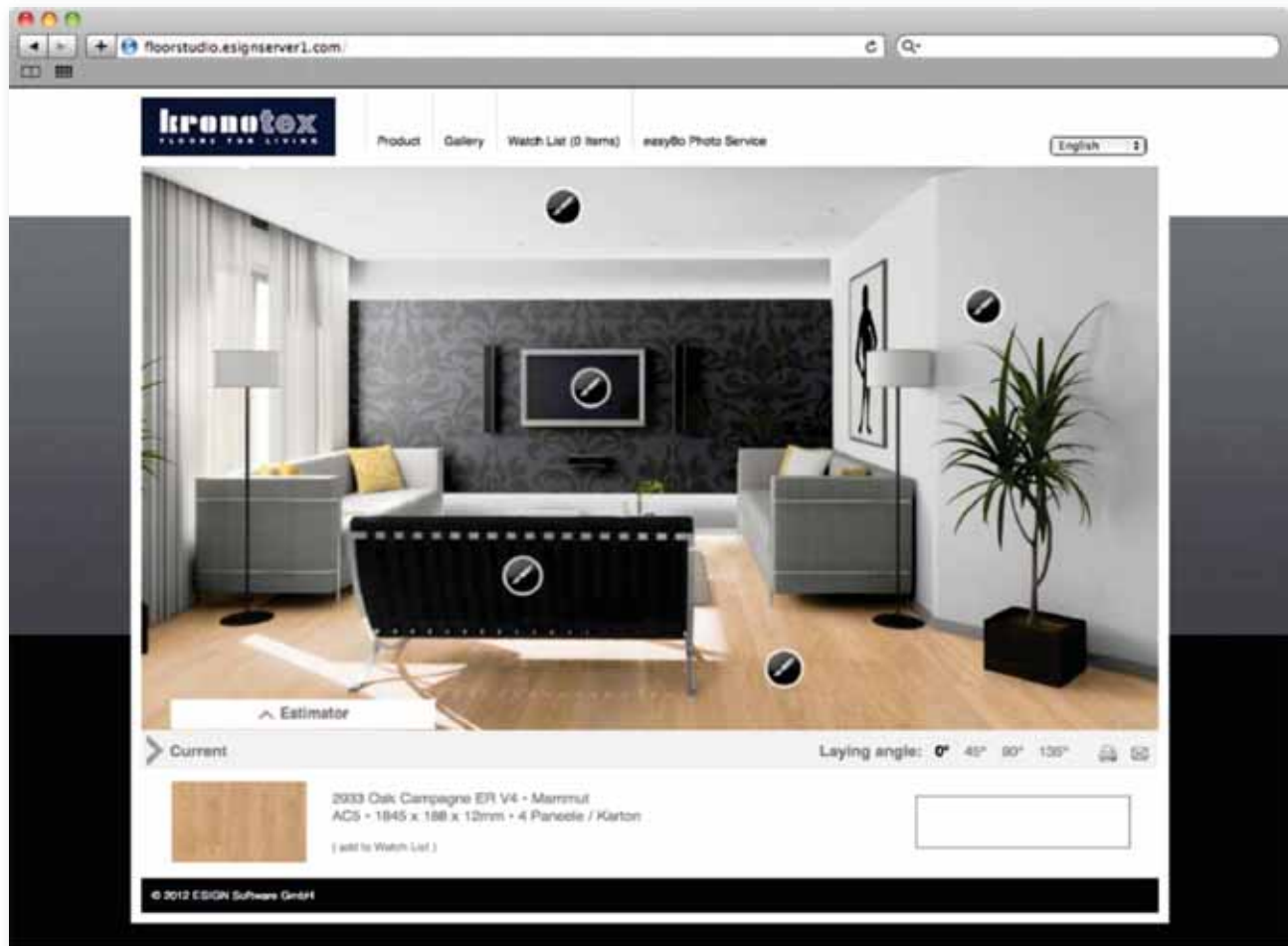
PALLET 56 boxes / 133.84m²





Online Floor Studio

Experience the effect of differing woods, ornamentation, wall and furniture colours in an accurate representation of any room. The online floor studio is the ultimate tool for both end user and salesman.



Colour selector

With one mouse click you can select the appropriate shade and tone from our whole collection.

Additional selection criteria

These offer the perfect opportunity to narrow down your search for the perfect laminate. You can select from various qualities, including the type of element, the decoration number or the strength.

Surface view

Allows you to view elements from both head-on and in perspective.

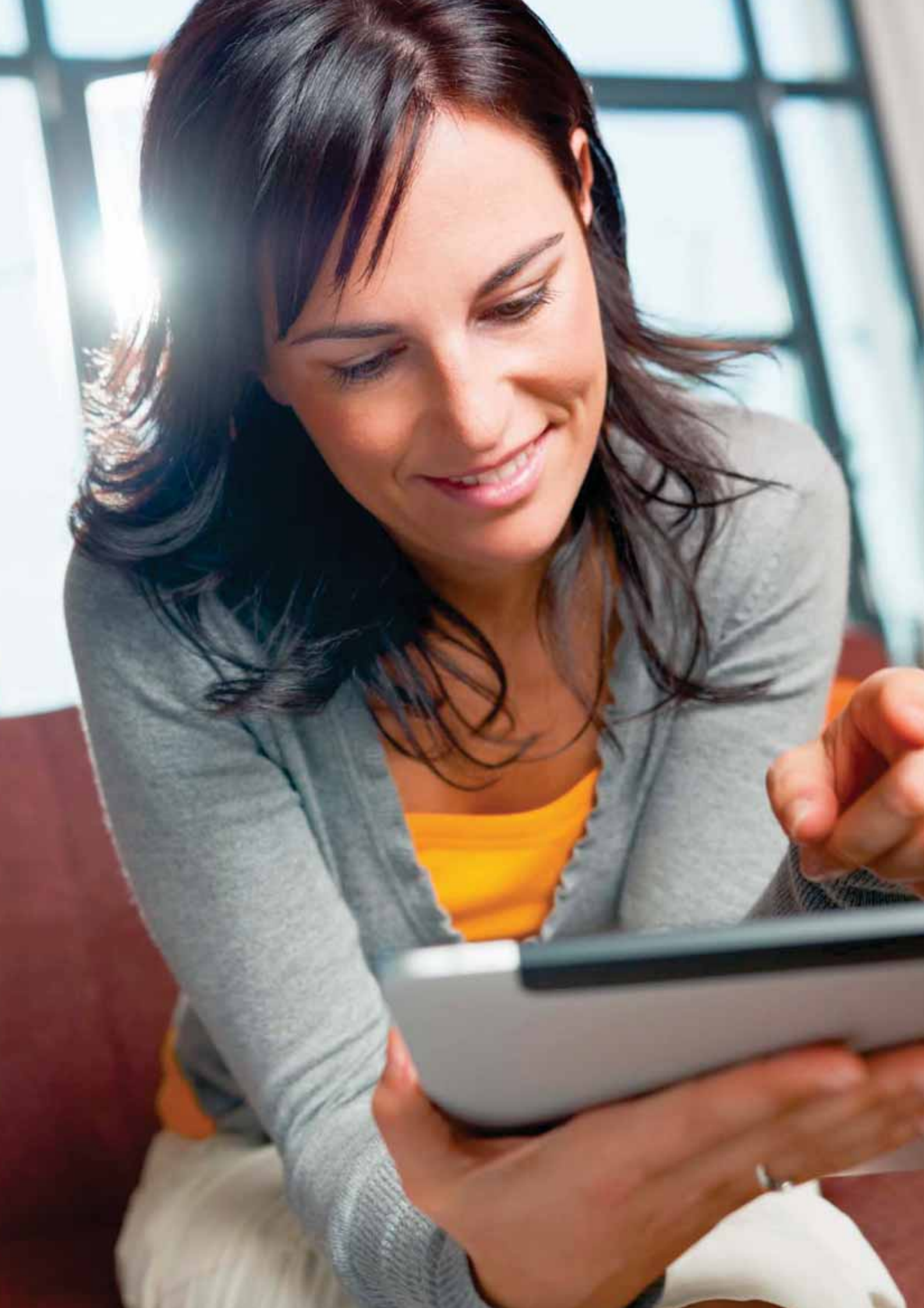
Notes

Gives you the opportunity to get extra information about any of our products simply and conveniently.

The link function

With the link function, you can put your ideas before customers, suppliers, users and planners.









Our Environmental Product Declaration*

In order for environmental product balance sheets to be meaningful, they must be objectively comparable. So to let our customers easily understand and contrast our lifecycle analyses and environmental product data with those of other materials, we have firmly committed ourselves to a policy of total product transparency. We openly and voluntarily communicate the ecological balance sheets of our wood-based products in our Environmental Product Declarations (EPDs). Each EPD is issued by the

Institute Construction and Environment e.V. (IBU) in a format which was developed on the basis of internationally valid ISO standards in close collaboration with building and environmental authorities in Germany.



**Institut Bauen
und Umwelt e.V.**

*Institute Construction
and Environment e.V.*

*Our Environmental Product Declarations (EPDs) are globally acknowledged and accepted Type III environmental labels conforming to ISO 14025.

We stand for ecology

The only way to master major challenges is for all players to pull on one rope. One of the biggest and most urgent tasks facing humanity today is to protect the environment. Together we are strong! this statement also applies to achieving the sustainability goals we have set ourselves. All of our staff are involved in protecting the environment on a day-to-day basis. Each and every one of them is appropriately informed, instructed and trained. This ensures that every department has the environmental expertise it requires. We use our management for the earth pro-

gramme to raise the level of environmental awareness in the entire KRONO team. Our environmental management efforts focus on achieving the eco-efficiency defined in our corporate objectives. Every product that leaves our factory must exhibit both excellent price/performance and superb environmental compatibility. This starts with the exclusive use of legal, certified raw materials from sustainably managed forests, continues with rigorously monitored production, and is also ensured during subsequent utilisation and ultimate disposal of our products.

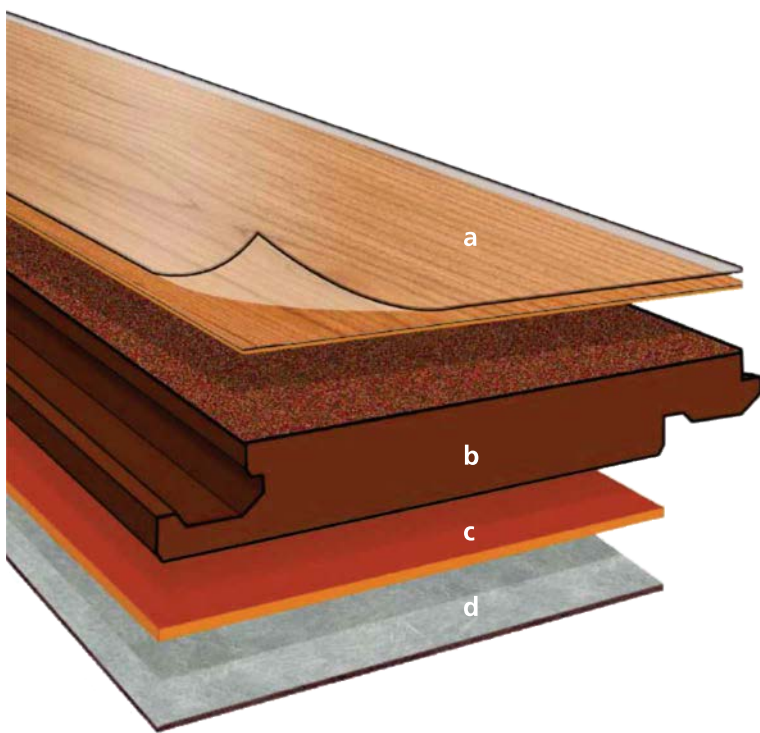
We have big plans

We have a clearly defined goal: we want you, us and future generations to be able to enjoy living in good health on our unique blue planet tomorrow as well. We are therefore continuing to develop eco-friendly wood-based materials which are healthy for you and the environment alike. Right now we are preparing EPDs for all of our Kronotex laminate floorings to facilitate direct comparison and checking of their environmental benefits.



Panel construction

Kronotex laminates consist of at least four stable layers which ensure the extraordinary durability and unique quality of Kronotex floors.



- a** The top surface of the flooring consists of a specially resistant protective overlay film. This is fused with an attractive resinated decorative film into a practically abrasion-proof, hardwearing surface.
- b** Extremely dense HDF fiberboard forms the supportive core (HDF, E1).
- c** On the undersurface of the core a dampnessimpeding stabilization film ensures and preserves the high structural stability of Kronotex laminates.
- d** Selected floorings are fitted with an additional SOUND DESIGN underlay to minimise footstep and ambient noise.

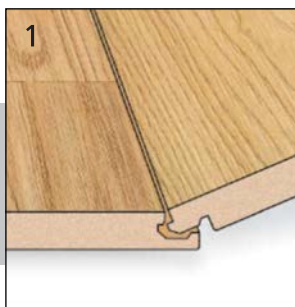
The CLIC-System

Installing a floor becomes childs play: A fingertip is enough to join panels simply unpack, lay, snap together and done.

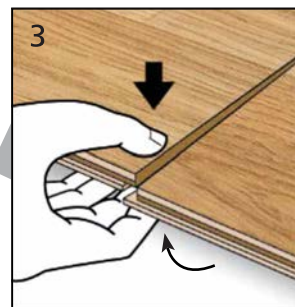
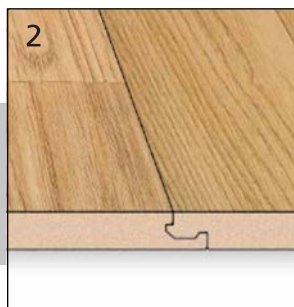
No effort involved your hammer and block can stay in the tool box.



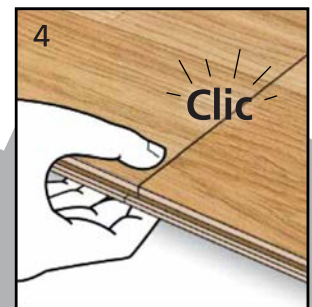
- Much easier to install.
- Up to 50% quicker to install.
- No hammer, tapping block and pulling bar required.
- Safe and stable.
- You can walk on the floor immediately after installation.



Long side



Short side



Click

What counts is the right base

Once you have decided for a laminate floor, when quality and appearance are a perfect fit, then you need to check the requirements for perfect installation.

Very important is a suitable subfloor:

- Kronoply OSB
- old flooring such as wood, firmly-adhering PVC, dry ceramic, linoluem
- cement screed (max. residual moisture: 2.0 CM%)
- anhydrite cement and anhydrite flow cement screed (max. residual moisture: 3.0 CM%)
- magnesia screed (max. residual moisture: 3.0 CM%)

Have a screed specialist in your area give you a residual moisture report!

Wet rooms, damp rooms (except OCEAN and BLISS ART), saunas, carpeting and xylolith are not suitable subfloors.

The subfloor must be dry, level, firmly affixed and clean. Minor unevenness can be compensated with an underlay mat or if exceeding 3 mm/m sanded down or leveled with a filler.

Floor heating no problem

Kronotex laminate floors can be readily installed upon underfloor heating, serve well and even help to save on heating costs.

Be sure to heat mineral underlays before flooring installation to eliminate any excess dampness.

Have a heating specialist in your area give you a heating report.

Ensure that during installation, the surface temperature of the floor is at least 15 °C (60 °F).

For dampness insulation and as a vapor barrier, use a PE film (0.2mm) underlayment. For sound absorption you can use PE foam, Kronotex underlay mat or Kronotex Laminate flooring with SOUND DESIGN.

At the beginning of each heating period, when you first turn on the underfloor heating, raise the temperature gradually in 5 °C (9 °F) increments per day until you reach the desired temperature. The floor's surface temperature should not exceed 26 °C (80 °F).

Cleaning and care

Kronotex flooring is not only hygienic but also very easy to look after.

Sweep the dry floor with a soft broom or use a vacuum cleaner.

Marks and dirt can be wiped off with a slightly damp cloth, following the grain of the plank.

For stubborn marks, please use Kronotex cleaner.

Please use felt pads under furniture and soft rubber castors on chairs.

Place door mats in special areas (hall, entrance). In industrial buildings, provide footwells.

Minor damage to the floor can easily be repaired with the Kronotex repair kit.

In case of more serious damage, please consult a specialist.

Not only do Kronotex floors meet the prescribed norms, they consistently exceed them! This is possible because Kronotex adopts a fully-integrated approach to production (from the tree through to the finished panel), and has numerous control and measuring devices at its disposal. For this reason, Kronotex can offer guarantees which go far and beyond warranties under law. You will be hard pressed to find any other producer who can do likewise.

Kronotex GmbH & Co. KG (in the following: Kronotex) provides buyers in addition to the unencumbered guarantee under law, an additional guarantee covering the abrasion resistance of the floors surface. It extends from the date of purchase and covers the products as follows:

CONDITIONS OF GUARANTEE

Kronotex laminate panels must be checked before and during installation for any defects. No liability is accepted for laminate flooring installed despite visible defects.

Kronotex laminate floors must be installed properly according to the instructions, in a dry room, and in accordance with the respective use class. No liability is accepted for Kronotex laminate floors installed in damp rooms.

Abrasion areas on Kronotex laminate floors must be clearly visible and at least 1cm² in size. And in particular the design layer must be completely abraded. No liability is accepted for abrasion on the edges of the elements or for unusual or improper use, and in particular for damage caused by mechanical stress.

Validity of guarantee is dependent on regular cleaning and maintenance of Kronotex floors as described in the care instructions.

Claims under guarantee are valid only if submitted within 30 days of ascertaining damage and accompanied by the original receipt from the retailer. In investigating a guarantee claim, Kronotex retains the right to examine the floor in question on site.

OUR GUARANTEE

In cases falling under guarantee, Kronotex will deliver a replacement for the damaged element. If the flooring in question is no longer available, then the buyer can choose a replacement of equal value from the current Kronotex product line.

Since an annual 10% depreciation in the value of Kronotex laminates can be assumed, delivery of a compensation product is dependent on payment of the appropriate difference by the buyer.

No liability is accepted for further damages, especially consequential damages such as those incurred during installation or removal, or transport costs for damaged Kronotex laminate floors.



Institut Bauen
und Umwelt e.V.
*Institute Construction
and Environment e.V.*





KRONOTEX

FLOORS FOR LIVING



As a worldwide leader in the manufacturing of laminate flooring, Kronotex offers not only innovative products of top quality, but also assists with extensive logistics, its distribution network and a knowledgeable customer service.

We will be pleased to answer your questions concerning our Kronotex laminate flooring.
Just ask for our information material!

MACNEIL IS THE SOLE SUPPLIER OF KRONOTEX IN SOUTH AFRICA



SUPPLIERS OF QUALITY PRODUCTS

JOHANNESBURG

Cnr James Crescent &
Suttie Road, Halfway House
Midrand 1685
Tel: +27 10 591 3988
Fax: +27 10 312 1674
Email: info.jhb@macneiljhb.co.za

WESTERN CAPE

21 Bertie Ave,
Epping 2
Cape Town 7460
Tel: +27 21 507 3040
Fax: +27 21 534 0546
Email: shane@macneil.co.za

GEORGE

8 Ring Road
Industrial, George 6530
Tel: +27 44 874 2632
Fax: +27 44 874 5719
Email: dieter@macneilgeorge.co.za

EASTERN CAPE

29 Lindsay Road,
Korsten,
Port Elizabeth 6001
Tel: +27 41 451 0400
Fax: +27 41 451 0179
Email: rykie@macneilec.co.za

DURBAN

3 Macaranga Close,
Mahogany Ridge, Westmead,
Durban 3610
Tel: +27 31 700 2444
Fax: +27 31 705 3599
Email: quintin@macneildbn.co.za

UPFRONT AGENCIES

9 Pyott Street,
Sydenham
Port Elizabeth 6001
Tel: +27 41 453 5411
Cell: +27 82 770 8356
Email: rodney@upfrontagencies.co.za